

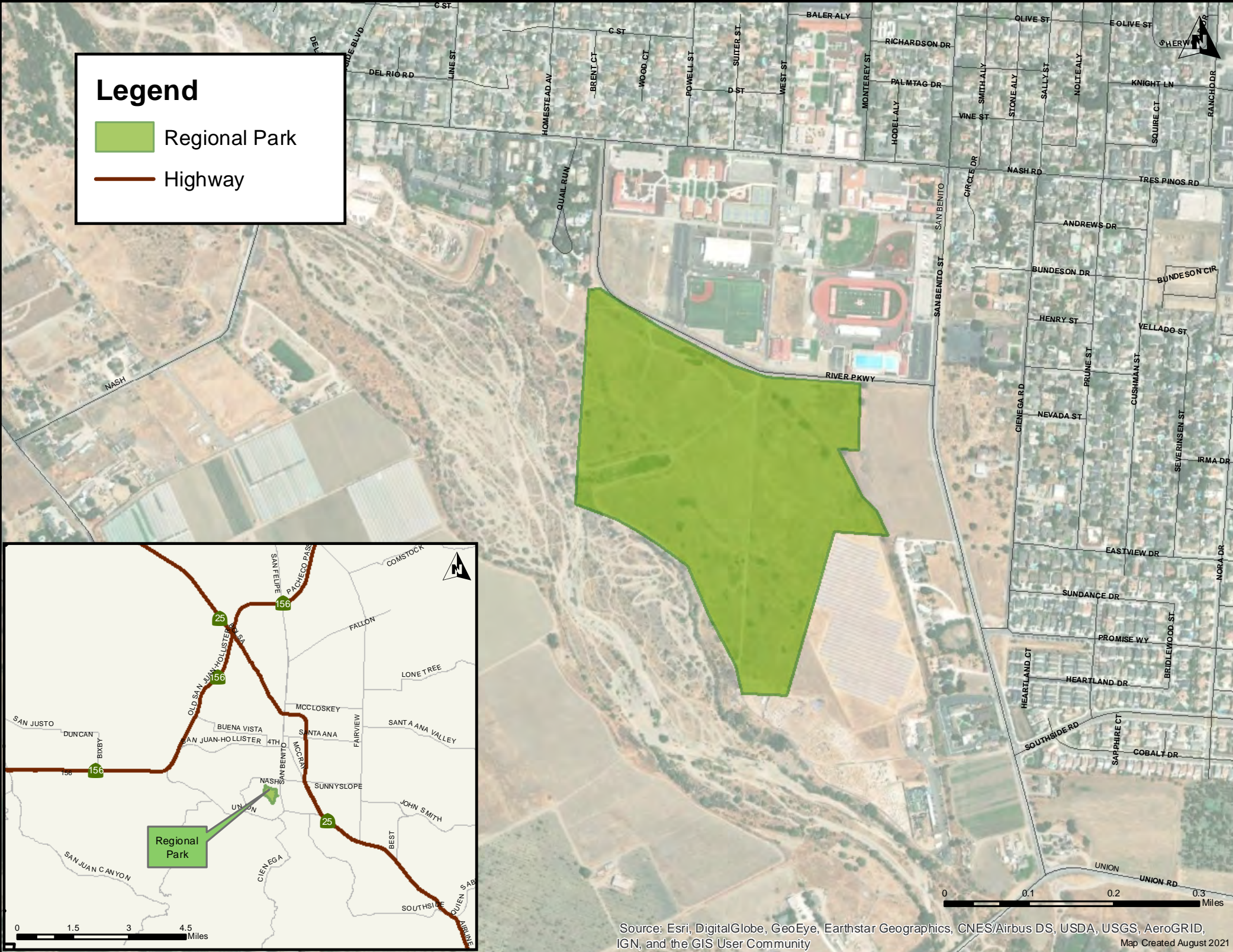
# RIVERVIEW REGIONAL PARK



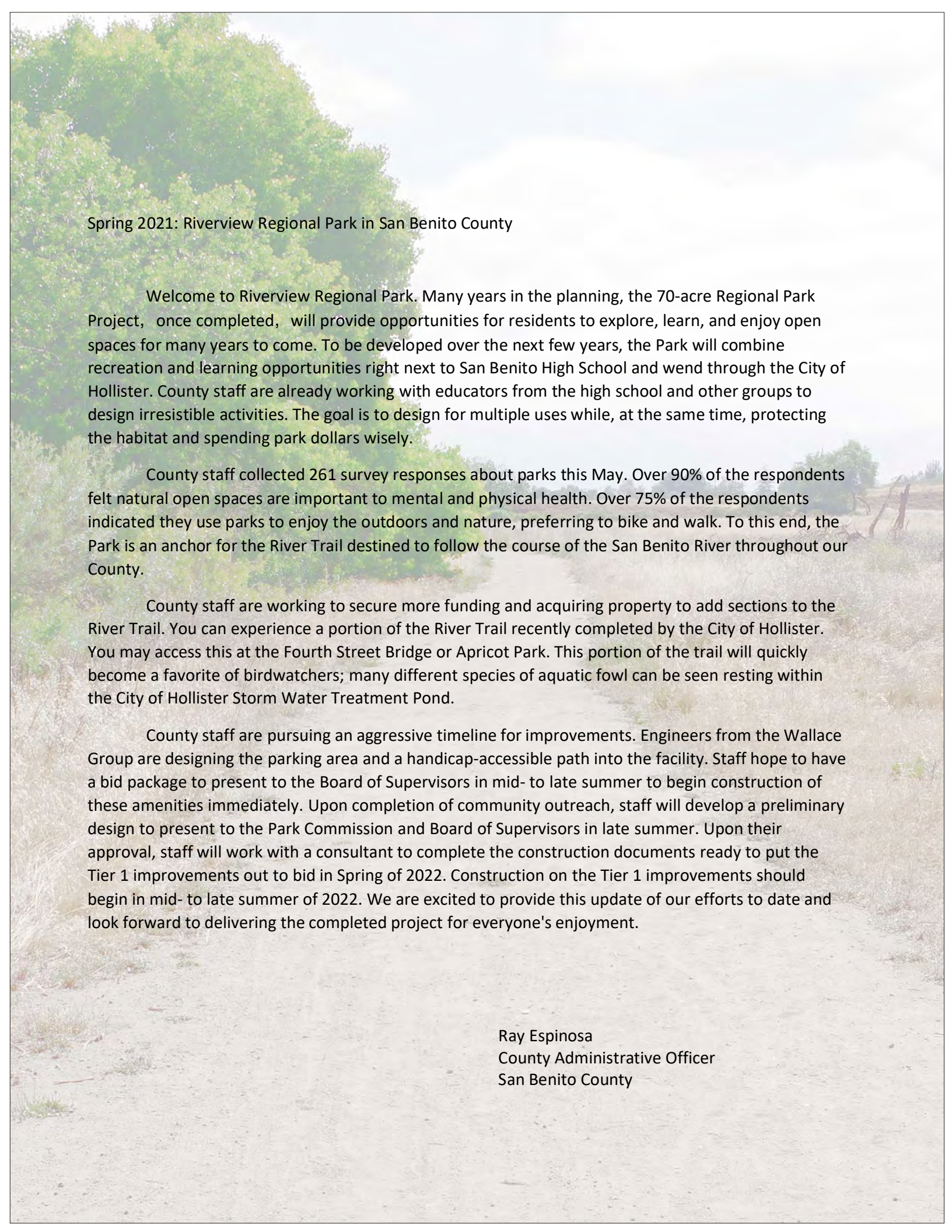


# Legend

- Regional Park
- Highway







## Spring 2021: Riverview Regional Park in San Benito County

Welcome to Riverview Regional Park. Many years in the planning, the 70-acre Regional Park Project, once completed, will provide opportunities for residents to explore, learn, and enjoy open spaces for many years to come. To be developed over the next few years, the Park will combine recreation and learning opportunities right next to San Benito High School and wend through the City of Hollister. County staff are already working with educators from the high school and other groups to design irresistible activities. The goal is to design for multiple uses while, at the same time, protecting the habitat and spending park dollars wisely.

County staff collected 261 survey responses about parks this May. Over 90% of the respondents felt natural open spaces are important to mental and physical health. Over 75% of the respondents indicated they use parks to enjoy the outdoors and nature, preferring to bike and walk. To this end, the Park is an anchor for the River Trail destined to follow the course of the San Benito River throughout our County.

County staff are working to secure more funding and acquiring property to add sections to the River Trail. You can experience a portion of the River Trail recently completed by the City of Hollister. You may access this at the Fourth Street Bridge or Apricot Park. This portion of the trail will quickly become a favorite of birdwatchers; many different species of aquatic fowl can be seen resting within the City of Hollister Storm Water Treatment Pond.

County staff are pursuing an aggressive timeline for improvements. Engineers from the Wallace Group are designing the parking area and a handicap-accessible path into the facility. Staff hope to have a bid package to present to the Board of Supervisors in mid- to late summer to begin construction of these amenities immediately. Upon completion of community outreach, staff will develop a preliminary design to present to the Park Commission and Board of Supervisors in late summer. Upon their approval, staff will work with a consultant to complete the construction documents ready to put the Tier 1 improvements out to bid in Spring of 2022. Construction on the Tier 1 improvements should begin in mid- to late summer of 2022. We are excited to provide this update of our efforts to date and look forward to delivering the completed project for everyone's enjoyment.

Ray Espinosa  
County Administrative Officer  
San Benito County

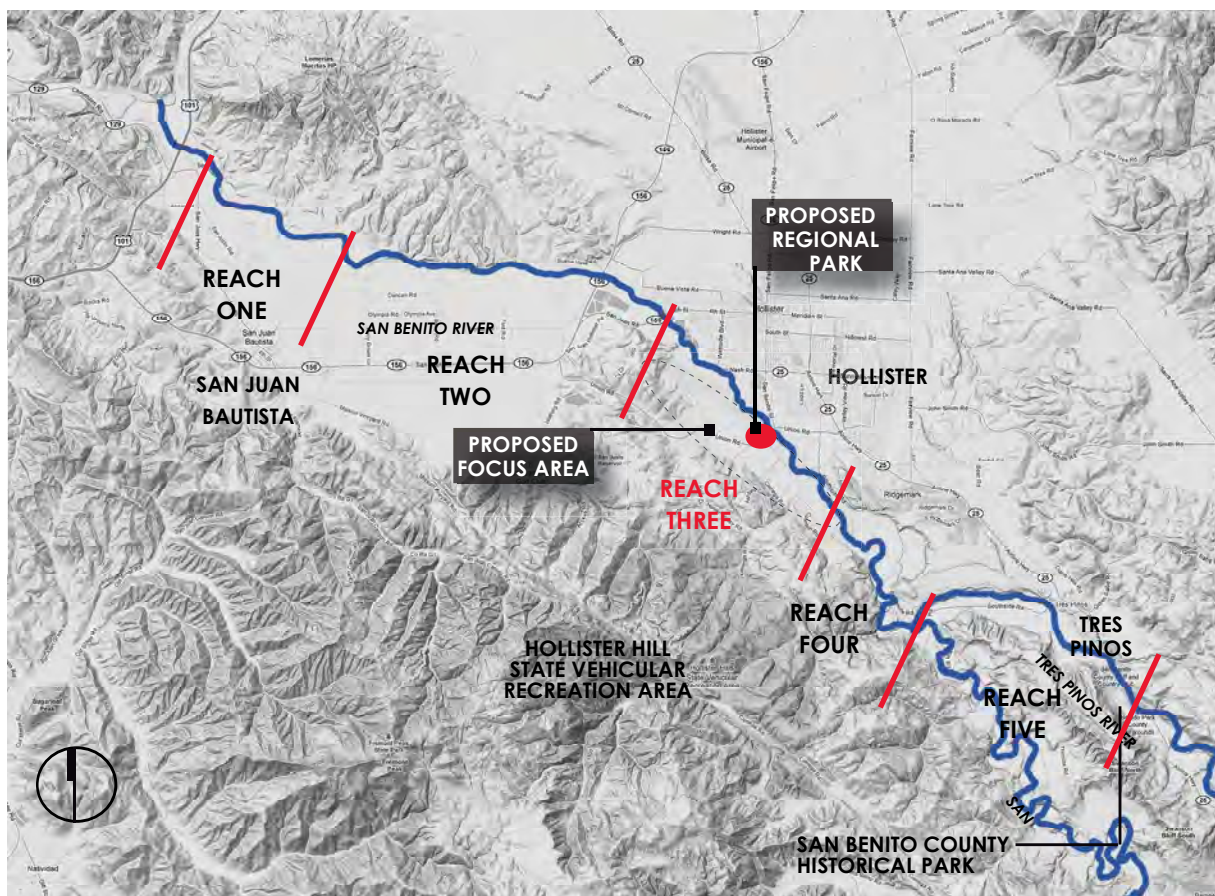


# 1 INTRODUCTION

## 1.1 RIVER PARKWAY FOCUS AREA AND REGIONAL PARK

A vision and draft Master Plan for a River Parkway has been developed for a 20-mile corridor along the San Benito River and Tres Pinos Creek. The River Parkway Master Plan identifies five River Parkway reaches, each with its own unique setting, opportunities and constraints. The Master Plan includes descriptions of all five reaches and design guidelines for a multi-use trail corridor and parkway amenities. Most of the land within the River Parkway planning area is in private ownership, therefore the Master Plan provides general guidelines and concepts rather than a detailed alignment and design of the trail corridor and amenities. Respect for private property rights and the future cooperation of willing landowners will be critical to the success of the 20-mile River Parkway. The Master Plan is long-term vision and will require many years to implement.

The central reach (Reach Three) of the corridor, located along the City of Hollister, is considered a focus area for the first phases of the River Parkway implementation. The Focus area extends  $3\frac{3}{4}$  miles along the San Benito River from the 4th Street bridge eastward to Hospital Road. Although most of the land within the Focus Area is presently in private ownership, San Benito County is coordinating with landowners in an effort to acquire land for a trail corridor and parkway amenities within some sections of the Focus Area. Section 2 of this Plan provides an overview of the setting, concepts, guidelines and program elements for the Focus Area. The proposed trail alignment and parkway design for the Focus Area in Section 2.3 is more detailed as compared to the general concepts presented in the River Parkway Master Plan.



**FIGURE 1-1  
RIVER PARKWAY FOCUS AREA AND REGIONAL PARK LOCATION MAP**



A key feature of the River Parkway Focus Area is a proposed regional park. San Benito County is presently in negotiation to acquire land from the San Benito High School District and private landowners to develop a new regional park. The proposed park site is located between the San Benito River and San Benito High School. A broad range of park uses are proposed for the regional park site, including a community center, outdoor amphitheater, swimming pool, softball fields, basketball courts, a playground, and other active recreation amenities. Park trails, educational gardens, an orchard, shade trees, and a picnic area are also proposed for the park site. Section 3 provides an overview of the regional park setting, program elements and the conceptual park layout.

Future development of the trail corridor, parkway amenities, and Regional Park should be compatible with adjacent habitat and wildlife areas. The Focus Area also provides opportunities for habitat protection and enhancement. General habitat protection and enhancement guidelines are presented in Section 4 of this Plan.



**FIGURE 1-2  
FOCUS AREA MASTER PLAN**

## 1.2 PLANNING BACKGROUND AND PROCESS

The planning process for the Focus Area and Regional Park began in 2012, concurrent with the overall River Parkway planning. The County organized an Advisory Committee to provide input throughout the process. The Committee represented a broad range of stakeholders, including members from the City of Hollister, the school district, and various community, economic, and transportation agencies and organizations. Advisory Committee meetings and community workshops were held to gather suggestions and ideas regarding goals, concepts, and park uses. Meeting summaries from the workshops are included in Appendix A. Three alternatives for the Regional Park were identified based on input from the community, the Advisory Committee, and the Parks and Recreation Commission. The preferred alternative selected by the Parks and Recreation Commission and Board of Supervisors is featured in Section 3 of this Master Plan (see Appendix B for alternative options).



## 2 THE RIVER PARKWAY FOCUS AREA

### 2.1 SETTING

The Parkway Focus Area, located within the River Parkway Reach 3, extends along the San Benito River from the 4th Street bridge upstream approximately 3 ¾ miles to Hospital Road. Within this reach, the river corridor orientation trends north/south. The City of Hollister is situated along the northeastern side and less developed land within unincorporated San Benito County along the southwestern side.

The setting of Reach Three is in contrast to the other Parkway Reaches (refer to River Parkway Master Plan Report for other reaches) as it is more urbanized and the river corridor has been altered more by sand and gravel mining and other human-related impacts. Within the boundaries of the City of Hollister, the setting along much of the river is developed with residential neighborhoods and public facilities. An undeveloped area, proposed for a future regional park or hub to the River Parkway, and open space, presently exists within the central portion of the reach adjacent to San Benito High School (Refer to Section 3.0 for Regional Park). Across the river from Hollister, the setting features agricultural fields and rural residences. Between Union Road and Hospital Road, both sides of the river feature primarily agricultural fields.

The landscape along both sides of the San Benito River within Reach Three is characterized by level river terraces. On the southwest side, rolling hillsides rise up beyond the upper terrace. To the east, the level terrain of the Hollister Valley extends to the east. Similar to Reach Two, the lower terraces and floodplain are relatively broad.

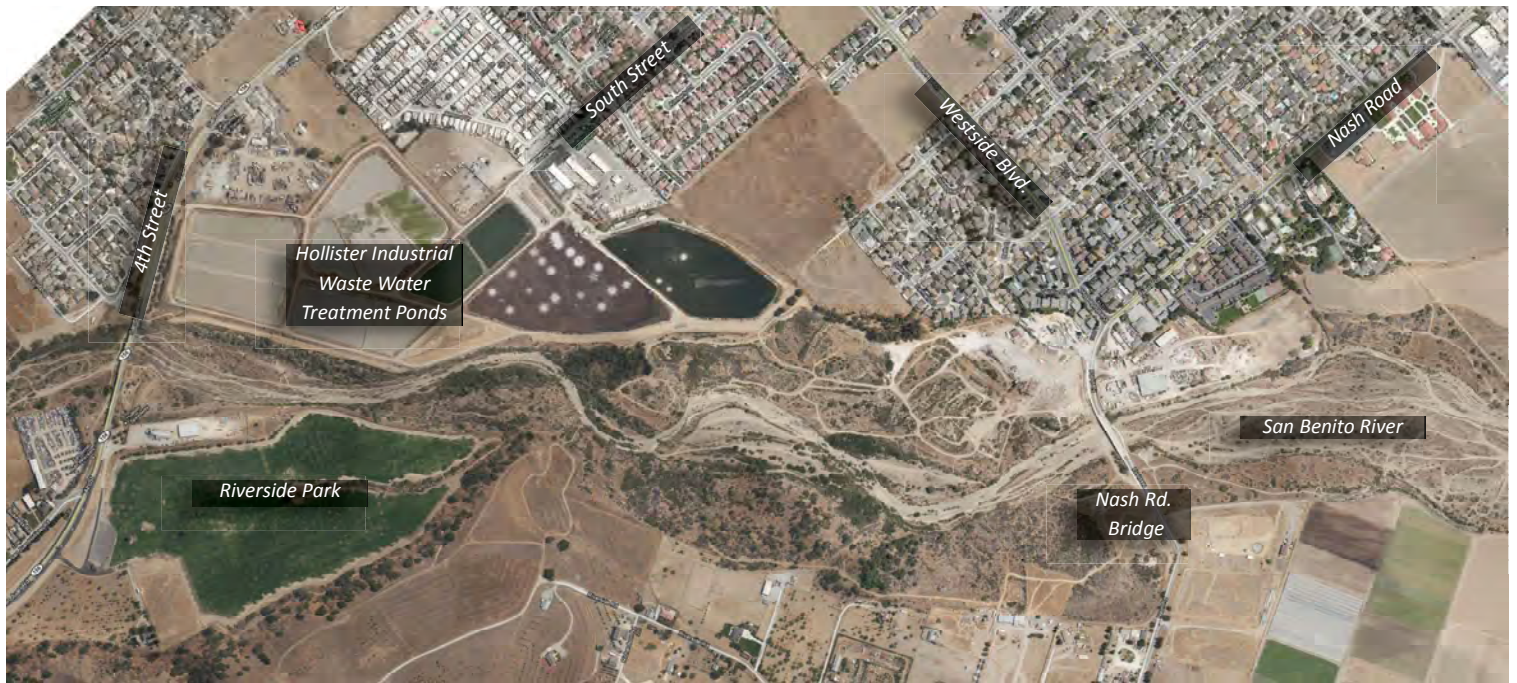
Sand and gravel deposits in the area between just north of Union Road to the south of Hospital Road were previously mined. Within the riverbed and on the riverbanks, prior sand and gravel mining operations have altered the landscape, including creation of former mining pits or settling basins, levees, unpaved mining roads, and piles of spoils.

The dominant habitat within this reach is mulefat scrub, however, there are also stands of riparian woodland habitat, particularly along the south bank and upstream of Union Road. Previously mined areas are being colonized by mulefat, as well as young willows and cottonwoods; however, the value of habitat recovery is moderated by the myriad of recreational trails that fragment the habitat. The scrub habitat area upstream (from Nash Road to Hospital Road) has been degraded by off-highway vehicle use. In these areas, the scrub has been trampled and the habitat fragmented by a mosaic of unpaved roads, user-created trails, and otherwise disturbed areas. Upland scrub occurs on the upper floodplain, such as near Nash Road. The urban and rural land uses adjacent to Reach Three moderates the value of the river habitats to wildlife as evidenced by the deposition of debris from the top-of-bank and off-highway vehicle use. Still, several stands of riparian woodland habitat that exist within this reach provide valuable wildlife habitat. Mature willow and cottonwood trees occur in the upstream area and a large stand of riparian woodland is establishing north of Hospital Road. This reach also abuts the City wastewater treatment ponds near 4th Street bridge, which attract waterfowl and other avian species depending upon the time of year and water levels in the ponds.

The mulefat scrub may provide suitable habitat for two special status plant species: Pinnacles buckwheat and Indian Valley bush mallow. The area also supports invasive, non-native trees, most notably occurrences of tamarisk. Some grassland areas within this reach add to the plant diversity; some areas support showy wildflowers, such as bi-colored lupine and owl's clover. Portions of Reach Three may provide marginal habitat, primarily as occasional foraging or as passage, for steelhead, California tiger salamander, California red-legged frog, western spadefoot toad, western pond turtle, San Joaquin whipsnake, western burrowing owl, northern harrier, white-tailed kite, western red bat, and San Joaquin kit fox.

Although the setting is more urbanized than other reaches, the agrarian heritage of the region and historic character of Hollister are important features within Reach Three. Agricultural fields and orchards continue to exist beyond the urbanized areas. The City of Hollister also features two historic districts, the downtown Hollister District and Monterey Street District.





**FIGURE 2-1  
FOCUS AREA AERIAL MAP**

While much of the river corridor within Reach Three is in private ownership, some of the land is owned by public agencies. These lands include property previously owned by the Brigantino family, now owned by the City of Hollister, (hereinafter referred to as “Riverside Park” in this master plan document, though not officially named at this time) the City of Hollister Industrial Wastewater Treatment Plant, school district lands, and river crossing rights-of-way. A substantial area within the river corridor is owned by mining companies, much of which has been previously mined for sand and gravel. Other adjacent lands featuring residences and agricultural lands are in private ownership.

Despite private ownership, there is substantial evidence of use by off-road motorcycles, ATVs, hikers, joggers, equestrians, bicycles, and paintball players within the river corridor. In many instances, these activities are occurring on existing unpaved roads within the river corridor, some of which were associated with prior mining activities. An analysis of these uses, and other impacts such as unauthorized dumping, was conducted in 2012-2013 and is presented in a separate document prepared for San Benito County. The mining reclamation area analyzed extends from just north of Union Road to south of Hospital Road (See Section 1.3)

## 2.2 GENERAL CONCEPTS AND GUIDELINES

### FOCUS AREA CONCEPTS

While the relatively level terrain on both sides of the river within the Focus Area is feasible for a multi-use trail corridor, the northeast side is recommended for the primary trail route because of its convenient proximity to neighborhoods, schools, and downtown Hollister. Secondary trail route segments could be developed on the western side if future opportunities arise. The relatively broad river corridor also offers potential opportunities for natural surface trails on lower terraces, especially within the previously mined area designated for reclamation.

Outdoor education opportunities within the Focus Area include a wildlife viewing and refuge area featuring treatment ponds situated within the Hollister Wastewater Treatment Plant. These open water ponds attract many species of waterfowl, making this area one of the best bird watching destinations in San Benito County. If compatible with future treatment facility operations, enhancements could include bird watching overlook platforms, nature trails, and interpretive displays. Further upstream, a future open space area is proposed along the east side of the River on the





terrace below the future Regional Park. This open space area would feature nature trails, overlooks, and interpretive displays. An outdoor education center is also proposed as part of the future Regional Park. The proximity to San Benito High School and other schools within the City of Hollister makes this reach an ideal location for outdoor education.

Several staging areas are proposed for this reach, including primary staging areas near the City of Hollister Industrial Wastewater Treatment Plant, at the future Regional Park, and just to the north of Hospital Road. Riverside Park could also serve as a staging area. Secondary staging areas may be developed on the west side of the river as opportunities arise. Primary staging areas with permanent facilities, such as restrooms, should be developed on the upper terrace lands less prone to flooding.

This reach features existing bridge crossings at Nash Road and Union Road, with a future bridge crossing planned for Hospital Road. The Nash Road bridge crossing was recently improved and now features a sidewalk on one side and bicycle lanes on both sides. The Union Road and Hospital Road bridges, scheduled for replacement, will both include a sidewalk on one side and bicycle lanes on both sides. A pedestrian/bicycle bridge is recommended at the northern end of the reach in the vicinity of the 4th Street bridge, with bridge access points at Riverside Park and the Industrial Wastewater Treatment Plant property. This will provide a safe, convenient connection between the existing park and proposed Parkway. Additional investigation and testing is required to determine the best location.

Although pedestrian and bicycle access across the San Benito River will be provided on roadway bridges and a possible future pedestrian/bicycle bridge, these crossings may not be suitable for equestrian use. Equestrian crossings of the low flow river channel may need to be designated within the river corridor. An analysis of the river channel conditions and land use constraints would be needed to identify specific locations for any trail crossings. Any crossing of the low flow river channel may also require seasonal restrictions due to potential flooding constraints. Without designated crossings, it is likely that future informal use would continue to result in disturbance of riparian vegetation and low flow channel habitat at numerous locations. Off-highway vehicle access and use would need to be prevented.

A pedestrian and bicycle trail route along the eastern riverbank within this reach offers valuable opportunities to connect neighborhoods, schools, and parklands. Providing safe routes to schools is vital to the transportation needs of the community and could be achieved in part by a continuous off-street bicycle/pedestrian trail along the San Benito



River. Convenient pedestrian and bicycle routes connecting from the River Parkway to downtown Hollister, the historic districts, and other destinations within Hollister would benefit both residents and visitors.

Any future trails and River Parkway amenities would be the result of negotiations with interested property owners/willing sellers or as conditions of future development. Specific trail alignments and locations of parkway amenities/staging areas would be determined as opportunities arise.

## FOCUS AREA OVERALL DESIGN GUIDELINES

### DEFINITIONS

**Upper Terrace.** Upper terrace lands along the San Benito River and Tres Pinos Creek which are higher in elevation than lower terraces and floodplain.

**Lower Terrace.** Lower geological terraces which are lower in elevation than the upper terraces and often within the 100-year floodplain.

**Multi-use.** A trail which includes pedestrian, mountain bike and equestrian use on the same trail tread.

**Primary Staging Area.** Staging areas that are intended to serve trail users who live within the community and visitors from outside of the San Benito County region. These staging areas may be new facilities developed as part of the River Parkway, or existing parks which can also serve as staging areas. They include parking for 20 vehicles. See River Parkway Master Plan report for complete guidelines.

**Secondary Staging Areas.** Staging areas that are intended to be smaller than primary staging areas and are to serve trail users who live within the community, though visitors may also use secondary staging areas. These staging areas would be developed as new facilities as part of the River Parkway. They include parking for 10 vehicles. See River Parkway Master Plan report for complete guidelines.

### TRAILS

- Develop the primary multi-use trail system on the upper terrace lands along the north side of the San Benito River.
- Develop any paved trails and other permanent improvements on the upper terraces. Trails located on the lower terrace should be designed to withstand periodic flooding.
- Designate alternate routes along existing public roadways as needed to provide continuous pedestrian/bicycle access along the north side of the San Benito River. Public roadways to be considered for access improvements include Apricot Lane and Westside Boulevard.
- Develop a new pedestrian/bicycle bridge crossing of the San Benito River connecting Riverside Park to the City of Hollister Industrial Wastewater Treatment Plant.
- Provide equestrian use river crossings at Union Road.
- Develop nature trails within the proposed open space area to the south of the proposed future Regional Park.
- Designate natural surface trails on the lower terraces within the river corridor, primarily utilizing existing unpaved roadbeds and other existing natural surface pathways between Union and Hospital Road. Trails should be sited in areas which ensure protection of the sensitive habitats and minimize impacts to the low flow channel.
- As opportunities arise, consider secondary trail routes on the south side of the San Benito River on the river terrace between Nash Road and Union Road; and alongside Cienega Road Extension to provide a looped trail with the north side of the river.



- Provide a direct, convenient pedestrian/bicycle connection from the multi-use trail to the future Regional Park. This connection may require crossing a proposed future Westside Boulevard extension.
- Provide a Class II bicycle lane along the proposed future Westside Boulevard extension.
- Identify pedestrian and bicycle connections from schools, downtown Hollister, historic districts and other destinations within the City of Hollister to the River Parkway.

## **OUTDOOR EDUCATION**

- Develop a wildlife viewing and refuge area utilizing ponds situated within the City of Hollister Industrial Wastewater Treatment Plant, with a focus on bird watching activities.
- Provide nature viewing overlooks and interpretive displays within the proposed open space area near Hospital Road.
- Provide interpretive displays along the primary multi-use trail route and nature trails on terrace lands, highlighting natural resources, river stewardship, and the community heritage of the City of Hollister.
- Consider the use of public art and community garden plots along the trail.

## **STAGING AREAS AND ACCESS**

- Provide primary and secondary staging areas (see Staging Area and Amenity Guidelines - River Parkway Master Plan Report Section 3.8).
- Primary staging areas may include Riverside Park, the proposed Regional Park, and in the vicinity of the Hospital Road crossing.
- Develop secondary staging areas in the vicinity of the City of Hollister Industrial Wastewater Treatment Plant or at the end of Bridge Road with access under 4th Street bridge, across from the Regional Park, and near the future Union Road bridge.
- Implement measures to prevent access to the river corridor by off-highway vehicles.

## **TRAIL CORRIDOR SETTINGS AND GUIDELINES**

Depending on the specific setting and site conditions within the Focus Area, different trail design guidelines are appropriate. Section 2.4 of this Plan includes trail corridor guidelines for the following settings:

- Agricultural/Rural Setting
- Urban/Park Setting
- Confined Corridor in Urban Setting
- Floodplain Setting
- Roadway Trail Corridor Setting

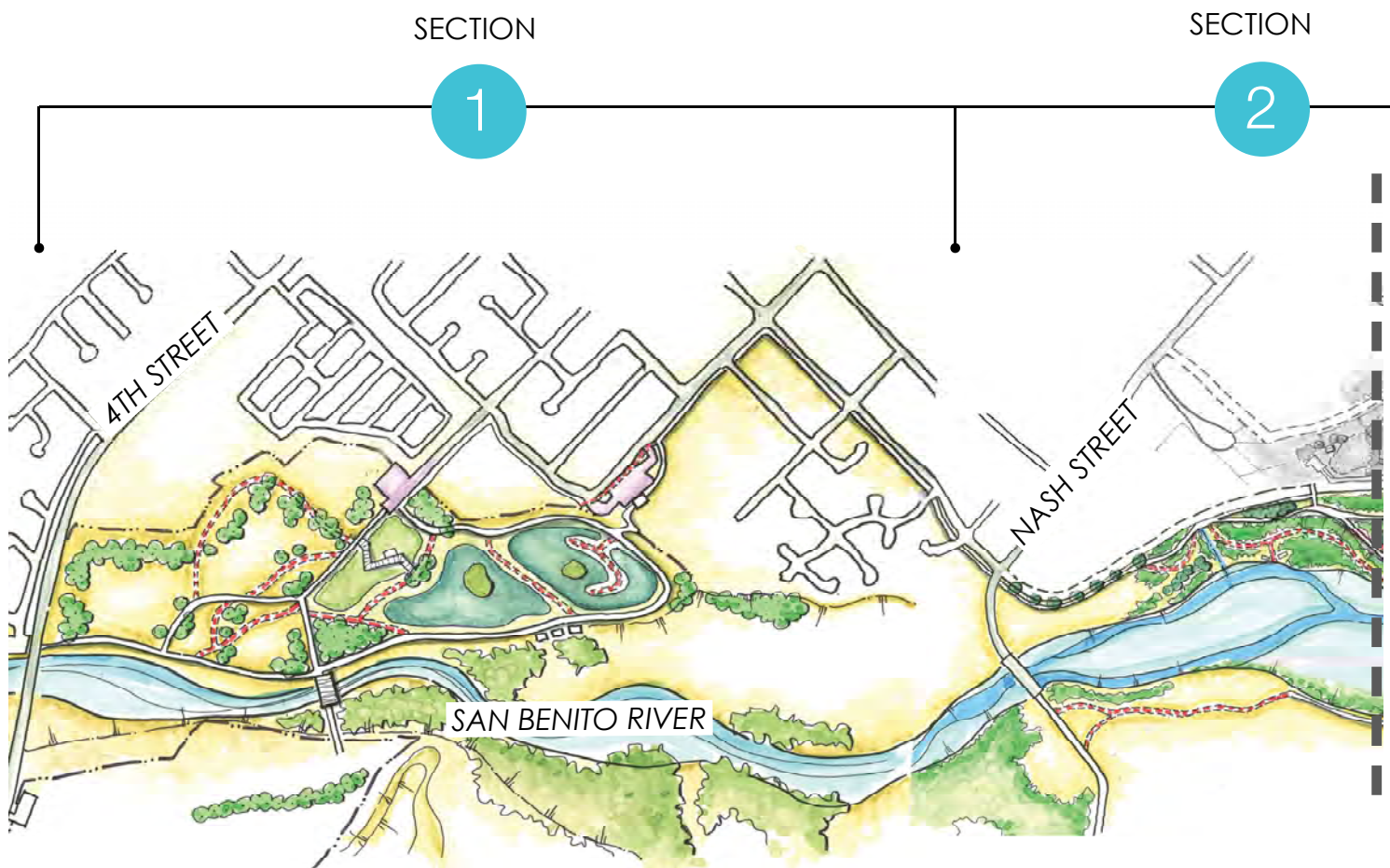
## **PARKWAY BUDGET**

A preliminary cost estimate was developed for a 1.5 mile stretch of Parkway within the Focus Area (1.5 mile corridor located in Section 3). The estimate assumes a 10' wide concrete multi-use trail with a 30" unpaved shoulder, unpaved trails, a split rail fence, a secondary parking lot and site furnishings such as benches and trash receptacles. The estimate for this 1.5 mile Parkway corridor ranges between \$1,215,000 - \$1,335,000. This estimate is very preliminary and further estimates should be developed for future budget establishment. Annual maintenance is estimated to be \$77,000 - \$85,600. See Appendix C & D for a summary breakdown of these estimates.



## 2.3 FOCUS AREA CONCEPTUAL PLANS

The Focus Area has been divided into four sections for purposes of the Master Plan. A conceptual plan layout and program elements are identified for each of the four sections in the following pages.

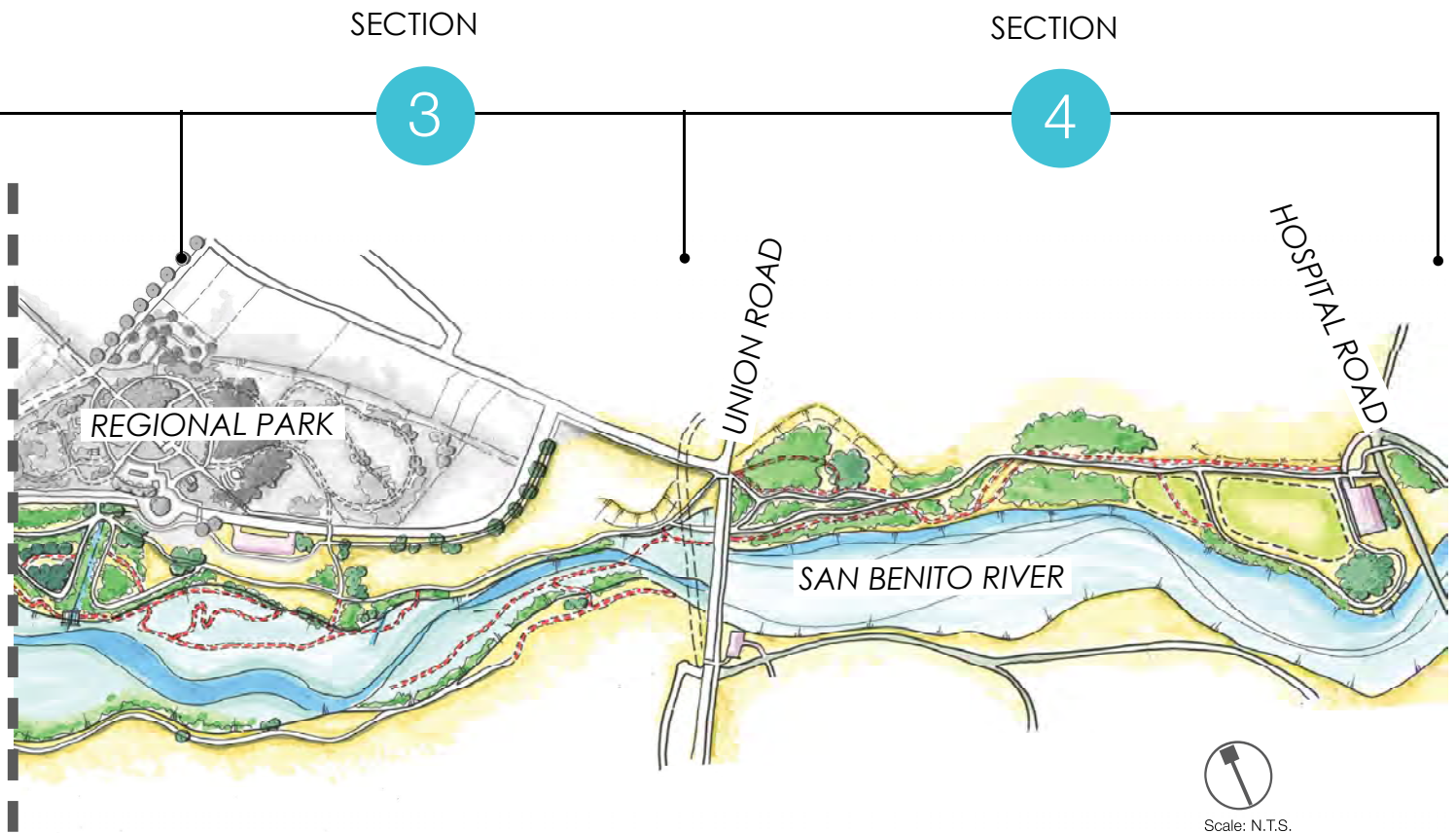


**FIGURE 2-2**  
**FOCUS AREA CONCEPTUAL PLAN**



## PROGRAM ELEMENTS

- PAVED TRAILS FOR RUNNERS AND WALKERS
- EQUESTRIAN TRAILS
- PRIMARY AND SECONDARY STAGING AREAS
- EQUESTRIAN STAGING AREA
- RESTROOMS
- PICNIC AREAS ALONG TRAIL
- DISTANCE MARKERS
- BIKE SKILLS PARK/ PUMP TRACK (Sec. 4)
- DISC GOLF (Sec. 4)
- EDUCATION/INTERPRETIVE SIGNS
- PAR COURSE FOR EXERCISE
- TRAIL AMENITIES/SITE FURNISHINGS



\* The Focus Area (Reach Three) has been divided into 4 SECTIONS in this report for graphic clarity only.



## 3 REGIONAL PARK

### 3.1 SETTING

Adjacent to the Focus Area, on the edge of Hollister city limits, a 53 acre site has been identified as a proposed location for a Regional Park. The central location along the River Parkway corridor, proximity to downtown Hollister, schools and resources, and views of the surrounding hills, makes this site ideal for a Regional Park.

The site is located south of San Benito High School near the intersection of Nash Road and San Benito Street. It is bound on the north by an existing steep bank (approximately 3:1) and the current school; to the east by a bank of varying steepness and private land owners; to the south by flat undisturbed grasslands, the proposed River Parkway Focus Area and San Benito River; and to the west undeveloped grasslands and private residences. The landscape on site is classified as grassland that has been disked to maintain the growth of the grasses. There are a few scattered trees on the site, but no built structures. Apart from the banks to the north and east, the site is relatively flat and slopes gradually south toward the San Benito River. A topographic survey has been completed as part of this project and is available through the County.



Scale: N.T.S.

**FIGURE 3-1  
REGIONAL PARK LOCATION MAP**

# 4 HABITAT PROTECTION AND ENHANCEMENT

## 4.1 GUIDELINES

The Focus Area and vicinity of the regional park site feature various habitat types, including grasslands, mulefat scrub and grasslands. The trail corridor, parkway amenities, and Regional Park should be compatible with adjacent habitat and wildlife area and also provide opportunities for habitat enhancement. The Focus Area also provides opportunities for habitat protection and enhancement. General habitat protection and enhancement guidelines are presented in this section of the Master Plan. Environmental review of the proposed Focus Area and Regional Park improvements under the California Environmental Quality Act will provide a detailed evaluation of potential impacts to habitat and wildlife and identify measures to avoid or minimize potential impacts as needed.

### FOCUS AREA GUIDELINES

#### PROTECTION OF RIPARIAN AND WETLAND HABITATS

- Retain existing stands of riparian woodland, particularly large stands on the east bank.
- Control public access to the river channel, limiting recreational activities to passive recreational (i.e., pedestrian and equestrian trails); provide signage to encourage use of designated creek crossings.
- Minimize impacts to mature riparian woodland where the bridge is proposed across the river, by choosing a location that lacks mature vegetation, if possible.
- Align trail to avoid or minimize removal of mature native trees, riparian woodland, mulefat scrub, and in-channel wetlands.
- Shield any night lighting along trails or bridges to prevent light spillage into riparian and stream corridors; limit lighting to low bollard-style security-type lighting, if feasible.
- Limit uses within proposed recreational area to low-impact uses to protect riparian resource values near Hospital Road.

#### SPECIAL STATUS SPECIES AND HABITAT

- Conduct focused presence-absence surveys for mulefat scrub, Pinnacles buckwheat and Indian Valley bush mallow and implement habitat avoidance and/or minimization measures when constructing trails, if the species are found.
- Confer with applicable regulatory agencies if steelhead, California tiger salamander, California red-legged frog, western spadefoot toad, San Joaquin whipsnake, western burrowing owl, northern harrier, white-tailed kite, western mastiff bat, western red bat, San Joaquin kit fox, and American badger or their habitat occur.
- Avoid construction during the nesting season within 200 feet of trees supporting nesting raptors.
- Conduct vegetation removal outside the bird breeding and nesting season, to avoid affecting nesting birds,.

#### HABITAT MANAGEMENT

- Remove/control occurrences of invasive, non-native plant species where they are encountered along or adjacent to the multi-use trail and nature trail to minimize their spread into natural areas.
- Utilize native grasses and groundcovers wherever feasible for erosion control.
- Utilize native trees and shrubs for landscaping where such landscaping is located within 100 feet of the riparian woodland.
- Encourage passive restoration of riparian vegetation along the stream bank to allow degraded areas to recover; implement active revegetation to close gaps in the riparian corridor.
- Include information on significant biological resources within the project's interpretive materials, where applicable.
- Restrict dogs to on-leash use at all times to minimize impacts to native habitat and species.



---

## **REGIONAL DESIGN GUIDELINES**

### **PROTECTION OF RIPARIAN AND WETLAND HABITATS**

- Retain existing stands of riparian woodland along the stream bank and on the terrace (i.e., in and around proposed nature trail and amphitheater).
- Discourage public access to the river channel; provide signage to encourage users to stay on the multi-use river parkway trail; provide vegetation screening and/or fencing to discourage access to the riverbed.
- Require dogs to be on-leash on the multi-use trail; prohibit dogs from the nature trail.
- Provide native vegetation screening and/or perimeter fencing to delineate the limit of the open play fields to avoid inadvertent impact to the adjacent riparian woodland.
- Shield any night lighting along trails or bridges to prevent light spillage into riparian and stream corridors; utilize low bollard-style lighting, if feasible.

### **SPECIAL STATUS SPECIES AND HABITAT**

- Confer with applicable regulatory agencies if impacts to these species or their habitat may occur.
- Conduct presence-absence surveys for the following special status wildlife species prior to regional park construction: burrowing owls; confer with applicable regulatory agencies if impacts to these species or their habitat may occur.
- Avoid construction during the nesting season within 200 feet of trees supporting nesting raptors.
- Conduct vegetation removal outside the bird breeding and nesting season to avoid affecting nesting birds.

### **HABITAT MANAGEMENT**

- Remove/control occurrences of invasive, non-native plant species where they are encountered along or adjacent to the trail to minimize their spread into natural areas.
- Utilize native grasses and groundcovers wherever feasible for erosion control.
- Utilize native trees and shrubs for landscaping where the trail is located within or adjacent to native habitats.
- Encourage passive restoration of riparian vegetation along the low-flow channel to allow degraded areas to recover. If trespass into the river channel is observed, install perimeter fencing to discourage unauthorized access to allow woody vegetation to regenerate.
- Include information on significant biological resources within the project's interpretive materials, where applicable.

# 2021 Riverview Regional Park Specific Survey Responses

**Under Tier 1, the following services below would be included in the park design. Please provide your feedback on the Tier 1 amenities. 34 responses**

- Parking lot and bathroom are key.
- I think this would be great for our community. Hollister is known for sports, and this would be a great place for athletes to train. We need this!!
- Regional Park should have equestrian and bike friendly route through it. If the cross-country course is not compatible with bikes/horses will there be alternate routes for these activities?
- More shade is needed. Will there be covering at the picnic areas?
- Seems like it's a great thing to have in town.
- These amenities could be a great asset to Hollister. We do not have an area that provides residents to walk and exercise in an outdoor environment specifically with these amenities.
- RC track please I own Hollister RC and Hobbies and have a lot of people interested and willing to help make this happen and there is a lot of my customers that come from other towns.
- Yes do.
- Love it ...need it!
- This sounds great. However, I'm AGAINST the disk golf option. I would like to see the restroom option moved up to this tier from Tier 3.
- Get rid of parking lot and get a parking easement from the high school.
- Whiteboard seems like an easy target to vandalize.
- I like the disc golf.
- WE NEED A NICE, CENTRALLY LOCATED, FENCED, SAFE DOG PARK. NOT THE AWFUL AIRPORT ONE ALL THE WAY ACROSS TOWN. BENCHES W/COVERS.
- RC track.
- Disc golf.
- Bathrooms should be part of tier 1. There need to be sidewalks on accompanying streets for access.
- Most diverse utilization of the zone.
- Restrooms should be moved up in priority. Parking is essential.
- Seems like a great plan, just wish there was a community pool that younger kids could go to and high schoolers could work at.
- Disc Golf.
- Great starting point
- RC track seems like a waste...
- Great.
- I like the combination of aspects that will meet a range of needs, from walking/hiking/running/biking to exercise, to education. Love the idea of outdoor classrooms!
- Walking trails are so needed. Gilroy and Morgan Hill are way ahead of Hollister in serving their community in outdoor activities.
- I'm excited about all the work and the planning to create this park. Hearing that there will be tier1 amenities such as a cross-country course fitness areas and disc golf so exciting!
- Many residents go to other counties for a park like this (me included) & end up spending money in that county shopping and dining. If we had access to this type of park, you would keep residents local.
- Yes.



# 2021 Riverview Regional Park Specific Survey Responses

- RC track and an off-leash dog park
- Disc golf baskets near picnic areas are dangerous. The county should hire a course designer or get input from local players. Besides that, I like the other ideas.
- Looks good.
- Almost everything on this map is a waste of our taxes we pay. Outdoor classrooms, walking trails, are bilingual signs are useless. The only thing worth it are the exercise stations and disc golf.
- Support. Include trash bins. I frequent trail and I come across lots of liter and doggy doo bags. How about some lighting for evening walks? Security phone??? Or alarm like college campuses????

**Based on initial community input for the Riverview Park, Tier 1 park amenities have been identified as the top priority for the park development. Under Tier 2, the following services below could be included in the park design if remaining budget allows. Please provide your feedback on the Tier 2 amenities:**34 responses

- Trails that can connect to old and new or that can be expanded.
- This would be an awesome for schools, teachers, students, and parents to advantage of. A great learning opportunity for all of us!!
- High hopes here for the ideas of 11-16. Make us put our thinking caps on!!! Will need staff to creatively program them to pull visitors and community into these learning opportunities. Great job!!!
- Sounds fun!
- I think a learning experience would be amazing.
- N/a
- BMX track with actual jumps sure has some rollers but have it not just for kids cuz just as many adults ride.
- Yes do.
- Would use it.
- Not sure what is meant by "launch" under #10...I do like that it sounds like I could bring my telescope to this spot. The rest sounds promising.
- Put in pump track where the parking lot would go.
- Garden preferred.
- Botanical gardens.
- We desperately need a nice, safe, fully fenced, centrally located, easily accessible for all, dog park. Benches with covers and a bag dispenser people can put refills in. Not #16, 15, 14, 13, 12
- Bike\RC track
- Pump track
- Sounds good. However, Restrooms and sidewalks for accessibility should be a priority over these amenities.
- Very important to people who care about education among these topics but doesn't appeal to a broad demographic. although I do think that these topics are important Restrooms should be moved up in priority. These are nice additions to our community.
- All of these are awesome.
- Pump Track.
- Tier 2 would be an asset to the community.

# 2021 Riverview Regional Park Specific Survey Responses

- Geology exploration zone.
- All the above if budget allows!... Park area should be for everyone.
- I wish some of these were within the Tier 1 options! Especially after COVID, it's more important than ever to get education outside into the world around us.
- Hope the Botanical Garden happens.
- I certainly think that outdoor learning opportunities and additional areas for Learners of all ages to take part in are great options if the budget allows.
- n/a
- 17 or 15
- BMX track.
- Idk if an astronomy pad could be warranted as top of this list unless it was decorative or interpretive. Gardens and geology zones should be moved up.
- Please ensure these are accessible. Consider wheelchair raised beds for garden access.
- More waste of money. These are all things people can do at home. We need activities for people that we can't do in our yards.
- Support.

**The County is applying for a park grant in 2021 that would allow for additional park amenities at a future date. Under Tier 3, the following services below could be included in the park design. Please provide your feedback on the Tier 2 amenities:**34 responses

- A pump track for bikes.
- I think restrooms should be in tier 1. However, i agree that all of these amenities would be awesome!!
- Restrooms should be included in Tier 1, even if just ADA porta potties (Google Pajaro River Picnic Area for photo of attractive affordable screen) until funding becomes available.
- Bathrooms are always a welcome sight for a runner lol what about an archery area?
- I think bathrooms are a necessity along with other things for people to do.
- 16-19 would be great. 20 can be chaotic in this area.
- restrooms 4 sure and have water and electricity at the RC track so people can charge there batteries and water 4 the track to keep dust down.
- Much needed.
- Need it.
- I'd like to see the restrooms move to Tier 1. I don't know what kind of sports would be allowed in #18...I would vote against any sort of skateboard type area.
- Amphitheater.
- Bathrooms should be a priority.
- Pickleball.
- DOG PARK NOW. WE DON'T HAVE A SAFE, FENCED, NICE, CENTRALLY LOCATED DOG PARK FOR ALL OUR PETS TO RUN N PLAY.
- Restroom.
- Restroom.
- Restrooms and sidewalks should be part of tier one.
- It would be awesome to have these recreational activities available as well if the budget allows!



## 2021 Riverview Regional Park Specific Survey Responses

- Restrooms are essential. All of these would be great additions.
- A county run business like Morgan Hill Aquatics Center that hires trained high school and college students would be great for community.
- Restroom.
- **Tier 3 would be an asset to the community.**
- Restroom. But also, maybe showers that can be used with a quarter or coin system that can be used by the homeless if needed.
- No pickleball!! Lol
- Seems like the restrooms option would be earlier in the tiers. If not, then I hope at least there will be portable toilets, otherwise it will limit the use of the park for families.
- Restrooms are a priority.
- I would love to see all of these things come to fruition. They are all spectacular ideas that foster community and get people together so we can meet one another.
- n/a
- 22
- Bathrooms we have enough baseball parks in this town that no one uses.
- That all looks good. If a restroom wouldn't be offered till tier three there has to be outdoor facility for the public. I like the public "green" restroom at Dolores Park in San Francisco.
- If these are added, please ensure they are accessible for people with different types of disabilities.
- No kid wants to learn while on a playground. The playground is time for kids to think freely and have fun, not be thinking about school still. Amphitheater is a good choice.
- Support.





Riverview Regional Park and River Trail concept plan  
Summer 2021





RIVERVIEW PARK CONCEPT DIAGRAM LEGEND

PHASE 1:

1. PARKING LOT WITH UNIVERSAL ACCESS TRAIL HEAD

PHASE 2:

2. UNIVERSAL ACCESS TRAILS (& MAINTENANCE ACCESS)
3. INTERPRETIVE SIGNS (BILINGUAL)
4. RESTROOM
5. CROSS COUNTRY COURSE WITH MILE MARKERS
  - a. MILE MARKER
6. CROSS COUNTRY VIEWING AREA
  - a. MULTI-PURPOSE OPTIONS
  - b. SHADE
  - c. ALL-WEATHER SURFACING, ALL ACCESS
7. ADVENTURE PLAYGROUND
  - a. MUSIC
  - b. SCIENCE
  - c. EXPLORATION
  - d. NATURE
8. PICNIC / OUTDOOR CLASSROOM (MULTIPLE LOCATIONS)
  - a. PERIODIC TABLE
  - b. OUTDOOR WHITEBOARD
  - c. SHADE
9. LAUNCH / ASTRONOMY PAD
10. DISC GOLF (9 HOLES, WITH FUTURE GROWTH OPTION)
11. OPEN LAWN AREA
12. EXERCISE STATIONS
  - a. GROUP FITNESS AREA
  - b. TRAIL STATIONS
13. SOFTBALL FIELD
14. MAINTENANCE YARD AND BUILDING
15. ILLUMINATED CROSSWALK

PHASE 3 (FUTURE):

16. PICKLEBALL
17. SPORT COURT
18. PHYSICS SLOPE
19. PHYSICS DROP
20. COMMUNITY / LEARNING GARDEN
21. BOTANICAL GARDENS
22. GEOLOGY EXPLORATION ZONE
23. PUMP TRACK
24. R/C CAR TRACK
25. AMPHITHEATER
26. CONCESSIONS BUILDING

LEYENDA DEL DIAGRAMA DEL CONCEPTO DEL PARQUE RIVERVIEW

FASE 1:

1. ESTACIONAMIENTO CON ACCESO GENERAL AL INICIO DEL COMINO

FASE 2:

2. COMINOS CON ACCESO GENERAL (Y ACCESO A MANTENIMIENTO)
3. LETREROS FÁCIL DE IDENTIFICAR (BILINGÜES)
4. BAÑOS
5. CURSO DE CAMPO TRAVIESA CON MARCADORES POR MILLA
  - a. MARCADOR POR MILLA
6. ÁREA DE VISUALIZACIÓN DE CAMPO TRAVIESA
  - a. OPCIONES DE USOS MULTIPLES
  - b. SOMBRA
  - c. SUPERFICIE PARA TODO TIPO DE CLIMAS, ACCESO GENERAL
7. JUEGOS DE AVENTURA PARA NIÑOS
  - a. MUSICA
  - b. CIENCIA
  - c. EXPLORACIÓN
  - d. NATURALEZA
8. AREA PARA MERENDAR / INSTRUCCIONES AL AIRE LIBRE (MULTIPLE UBICACIONES)
  - a. TABLA PERIODICA
  - b. PIZARRON
  - c. SOMBRA
9. AREA DE LANZAMIENTO / ASTRONOMÍA
10. GOLF DE DISCO (9 HOYOS, CON OPCIONE EN EL FUTURO DE CRECIMIENTO)
11. AREA DE PASTO
12. ESTACIONES DE EJERCISIO
  - a. ÁREA PARA CLASES DE EJERCISIO EN GRUPO
  - b. ESTACIONES DE CAMINOS
13. CAMPO DE SOFBOL
14. PATIO DE MANTENIMIENTO Y EDIFICIO
15. PASO DE PEATONES ILUMINADO

FASE 3:

16. PICKLEBALL
17. AREA DEPORTIVA
18. AREA DE INCLINACIÓN
19. AREA PARA DIVERSOS EXPERIMENTOS
20. COMUNIDAD / JARDIN DE APRENDIZAJE
21. JARDINES BOTÁNICOS
22. ZONA DE EXPLORACIÓN GEOLÓGICA
23. PISTA DE BICICLETAS CON BACHES
24. PISTA DE CARROS R/C
25. ANFITEATRO
26. EDIFICIO DE CONCESIONES



# 2021 Riverview Regional Park Specific Survey Responses

**Under Tier 1, the following services below would be included in the park design. Please provide your feedback on the Tier 1 amenities. 34 responses**

- Parking lot and bathroom are key.
- I think this would be great for our community. Hollister is known for sports, and this would be a great place for athletes to train. We need this!!
- Regional Park should have equestrian and bike friendly route through it. If the cross-country course is not compatible with bikes/horses will there be alternate routes for these activities?
- More shade is needed. Will there be covering at the picnic areas?
- Seems like it's a great thing to have in town.
- These amenities could be a great asset to Hollister. We do not have an area that provides residents to walk and exercise in an outdoor environment specifically with these amenities.
- RC track please I own Hollister RC and Hobbies and have a lot of people interested and willing to help make this happen and there is a lot of my customers that come from other towns.
- Yes do.
- Love it ...need it!
- This sounds great. However, I'm AGAINST the disk golf option. I would like to see the restroom option moved up to this tier from Tier 3.
- Get rid of parking lot and get a parking easement from the high school.
- Whiteboard seems like an easy target to vandalize.
- I like the disc golf.
- WE NEED A NICE, CENTRALLY LOCATED, FENCED, SAFE DOG PARK. NOT THE AWFUL AIRPORT ONE ALL THE WAY ACROSS TOWN. BENCHES W/COVERS.
- RC track.
- Disc golf.
- Bathrooms should be part of tier 1. There need to be sidewalks on accompanying streets for access.
- Most diverse utilization of the zone.
- Restrooms should be moved up in priority. Parking is essential.
- Seems like a great plan, just wish there was a community pool that younger kids could go to and high schoolers could work at.
- Disc Golf.
- Great starting point
- RC track seems like a waste...
- Great.
- I like the combination of aspects that will meet a range of needs, from walking/hiking/running/biking to exercise, to education. Love the idea of outdoor classrooms!
- Walking trails are so needed. Gilroy and Morgan Hill are way ahead of Hollister in serving their community in outdoor activities.
- I'm excited about all the work and the planning to create this park. Hearing that there will be tier1 amenities such as a cross-country course fitness areas and disc golf so exciting!
- Many residents go to other counties for a park like this (me included) & end up spending money in that county shopping and dining. If we had access to this type of park, you would keep residents local.
- Yes.



# 2021 Riverview Regional Park Specific Survey Responses

- RC track and an off-leash dog park
- Disc golf baskets near picnic areas are dangerous. The county should hire a course designer or get input from local players. Besides that, I like the other ideas.
- Looks good.
- Almost everything on this map is a waste of our taxes we pay. Outdoor classrooms, walking trails, are bilingual signs are useless. The only thing worth it are the exercise stations and disc golf.
- Support. Include trash bins. I frequent trail and I come across lots of liter and doggy doo bags. How about some lighting for evening walks? Security phone??? Or alarm like college campuses????

**Based on initial community input for the Riverview Park, Tier 1 park amenities have been identified as the top priority for the park development. Under Tier 2, the following services below could be included in the park design if remaining budget allows. Please provide your feedback on the Tier 2 amenities:**34 responses

- Trails that can connect to old and new or that can be expanded.
- This would be an awesome for schools, teachers, students, and parents to advantage of. A great learning opportunity for all of us!!
- High hopes here for the ideas of 11-16. Make us put our thinking caps on!!! Will need staff to creatively program them to pull visitors and community into these learning opportunities. Great job!!!
- Sounds fun!
- I think a learning experience would be amazing.
- N/a
- BMX track with actual jumps sure has some rollers but have it not just for kids cuz just as many adults ride.
- Yes do.
- Would use it.
- Not sure what is meant by "launch" under #10...I do like that it sounds like I could bring my telescope to this spot. The rest sounds promising.
- Put in pump track where the parking lot would go.
- Garden preferred.
- Botanical gardens.
- We desperately need a nice, safe, fully fenced, centrally located, easily accessible for all, dog park. Benches with covers and a bag dispenser people can put refills in. Not #16, 15, 14, 13, 12
- Bike\RC track
- Pump track
- Sounds good. However, Restrooms and sidewalks for accessibility should be a priority over these amenities.
- Very important to people who care about education among these topics but doesn't appeal to a broad demographic. although I do think that these topics are important Restrooms should be moved up in priority. These are nice additions to our community.
- All of these are awesome.
- Pump Track.
- Tier 2 would be an asset to the community.

# 2021 Riverview Regional Park Specific Survey Responses

- Geology exploration zone.
- All the above if budget allows!... Park area should be for everyone.
- I wish some of these were within the Tier 1 options! Especially after COVID, it's more important than ever to get education outside into the world around us.
- Hope the Botanical Garden happens.
- I certainly think that outdoor learning opportunities and additional areas for Learners of all ages to take part in are great options if the budget allows.
- n/a
- 17 or 15
- BMX track.
- Idk if an astronomy pad could be warranted as top of this list unless it was decorative or interpretive. Gardens and geology zones should be moved up.
- Please ensure these are accessible. Consider wheelchair raised beds for garden access.
- More waste of money. These are all things people can do at home. We need activities for people that we can't do in our yards.
- Support.

**The County is applying for a park grant in 2021 that would allow for additional park amenities at a future date. Under Tier 3, the following services below could be included in the park design. Please provide your feedback on the Tier 2 amenities:**34 responses

- A pump track for bikes.
- I think restrooms should be in tier 1. However, i agree that all of these amenities would be awesome!!
- Restrooms should be included in Tier 1, even if just ADA porta potties (Google Pajaro River Picnic Area for photo of attractive affordable screen) until funding becomes available.
- Bathrooms are always a welcome sight for a runner lol what about an archery area?
- I think bathrooms are a necessity along with other things for people to do.
- 16-19 would be great. 20 can be chaotic in this area.
- restrooms 4 sure and have water and electricity at the RC track so people can charge there batteries and water 4 the track to keep dust down.
- Much needed.
- Need it.
- I'd like to see the restrooms move to Tier 1. I don't know what kind of sports would be allowed in #18...I would vote against any sort of skateboard type area.
- Amphitheater.
- Bathrooms should be a priority.
- Pickleball.
- DOG PARK NOW. WE DON'T HAVE A SAFE, FENCED, NICE, CENTRALLY LOCATED DOG PARK FOR ALL OUR PETS TO RUN N PLAY.
- Restroom.
- Restroom.
- Restrooms and sidewalks should be part of tier one.
- It would be awesome to have these recreational activities available as well if the budget allows!



## 2021 Riverview Regional Park Specific Survey Responses

- Restrooms are essential. All of these would be great additions.
- A county run business like Morgan Hill Aquatics Center that hires trained high school and college students would be great for community.
- Restroom.
- **Tier 3 would be an asset to the community.**
- Restroom. But also, maybe showers that can be used with a quarter or coin system that can be used by the homeless if needed.
- No pickleball!! Lol
- Seems like the restrooms option would be earlier in the tiers. If not, then I hope at least there will be portable toilets, otherwise it will limit the use of the park for families.
- Restrooms are a priority.
- I would love to see all of these things come to fruition. They are all spectacular ideas that foster community and get people together so we can meet one another.
- n/a
- 22
- Bathrooms we have enough baseball parks in this town that no one uses.
- That all looks good. If a restroom wouldn't be offered till tier three there has to be outdoor facility for the public. I like the public "green" restroom at Dolores Park in San Francisco.
- If these are added, please ensure they are accessible for people with different types of disabilities.
- No kid wants to learn while on a playground. The playground is time for kids to think freely and have fun, not be thinking about school still. Amphitheater is a good choice.
- Support.





Riverview Park Visioning  
San Benito County

Concept Diagram  
Board of Supervisors  
Sept 20, 2021








# San Benito County

## Resource Management Agency


### Riverview Regional Park Update

# Riverview Regional Park Update

- ▶ The State of California is offering Regional Park grants of up to \$3M, available only to Counties and special districts for projects larger than 45 acres.
  - ▶ In May, San Benito County RMA Staff conducted a public outreach campaign to receive feedback on the County Park program and to encourage feedback on design ideas for the Riverview Regional Park.
  - ▶ This multifaceted campaign, required by the Prop 68 grant application, included traditional on-site public meetings and an electronic survey.
  - ▶ Staff received wide ranging feedback Over 300 individual responses and worked with our consultant the Wallace Group to create a concept design to move forward with the grant process.
- 

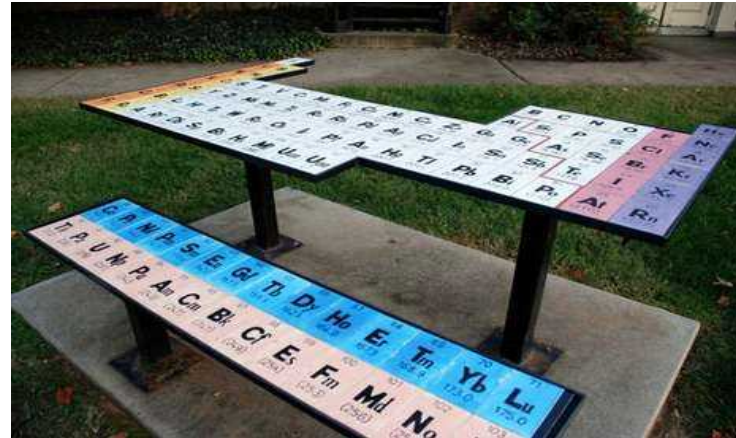


# Riverview Regional Park Update

- ▶ Working with the designer, staff incorporated many of the specific features that were requested from the public.
  - ▶ Our property does have some restrictions and we were not able to accommodate all requests.
  - ▶ Adjacent to the high school, Staff focused on the incredible opportunities that the park's location provides for dual programming and shared resources.
  - ▶ Other amenities were included because they create opportunities for additional public private partnerships and also create unique recreational experiences for our community.
  - ▶ We tried not to repeat features available at other local parks.
- 

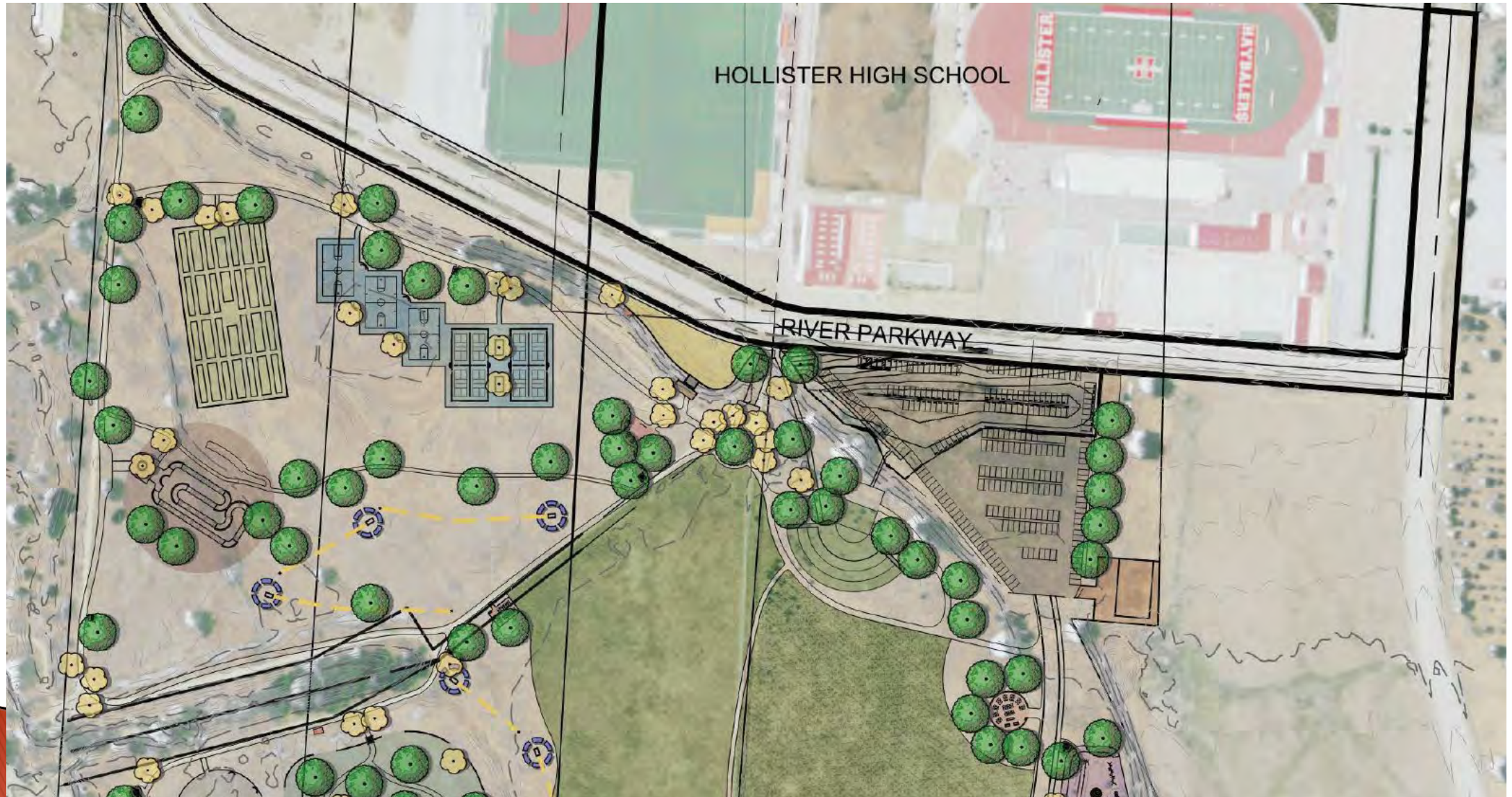
# Riverview Regional Park Update

- ▶ Endeavor to construct dual use areas to maximize the public investment.
- ▶ **Example:** A picnic area that is heavily used on weekends and rarely used during the week could become an outdoor classroom during the week.





# Riverview Regional Park Update







Community  
Garden

An aerial photograph of a park area. In the top left, a red cloud callout points to a rectangular garden bed divided into many small squares. In the top right, a red cloud callout points to several blue rectangular courts. In the center, a red cloud callout points to a winding path. The bottom of the image shows a pump track with yellow dashed lines and blue circular features. The park is landscaped with green trees and yellow flowers.

Pickleball & Sport  
Courts

Pump Track



Picnic &  
Classroom

Amphitheater

Bathroom &  
Maintenance

Group  
Exercise



# Riverview Regional Park Update





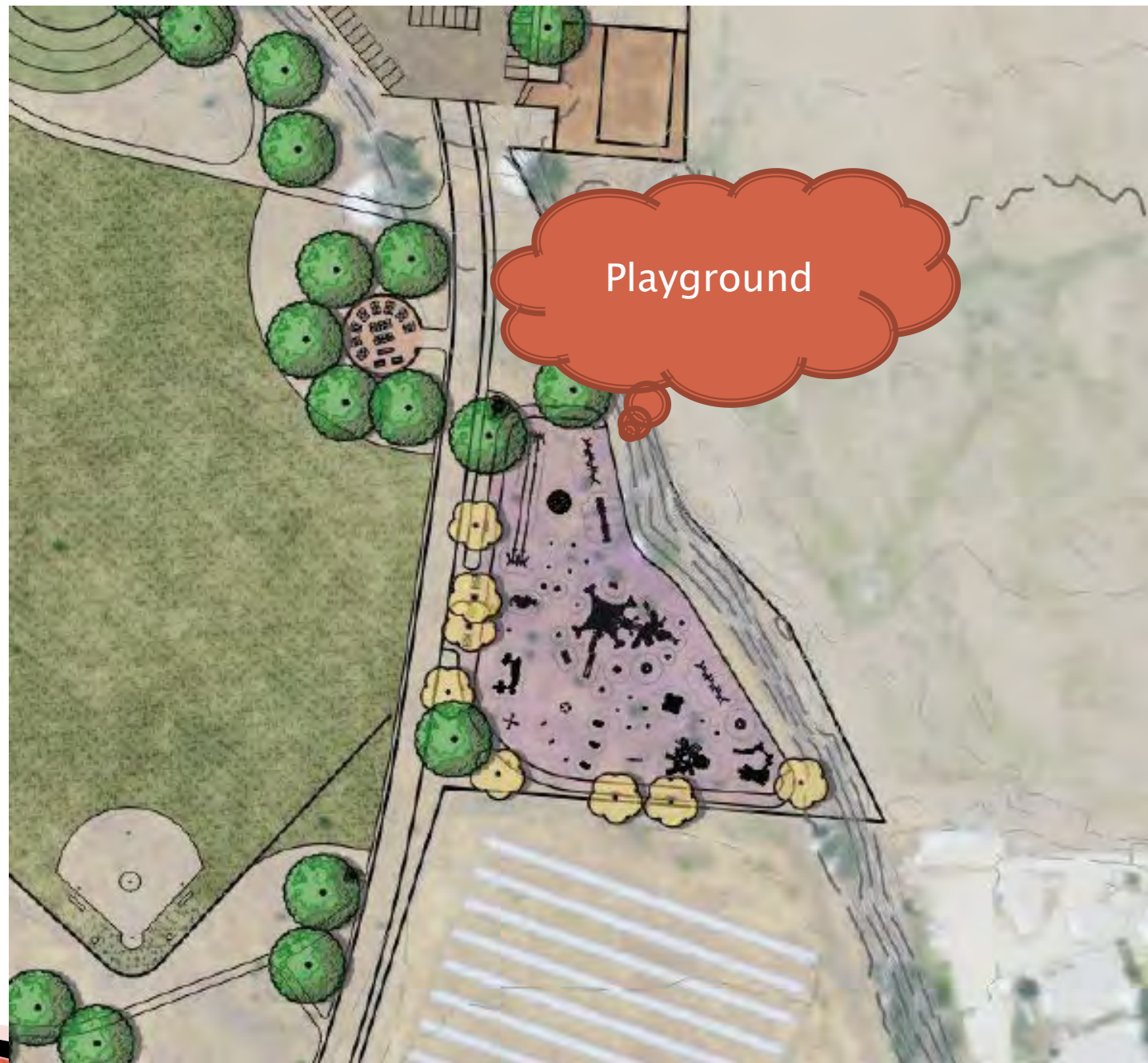


Cement Circle

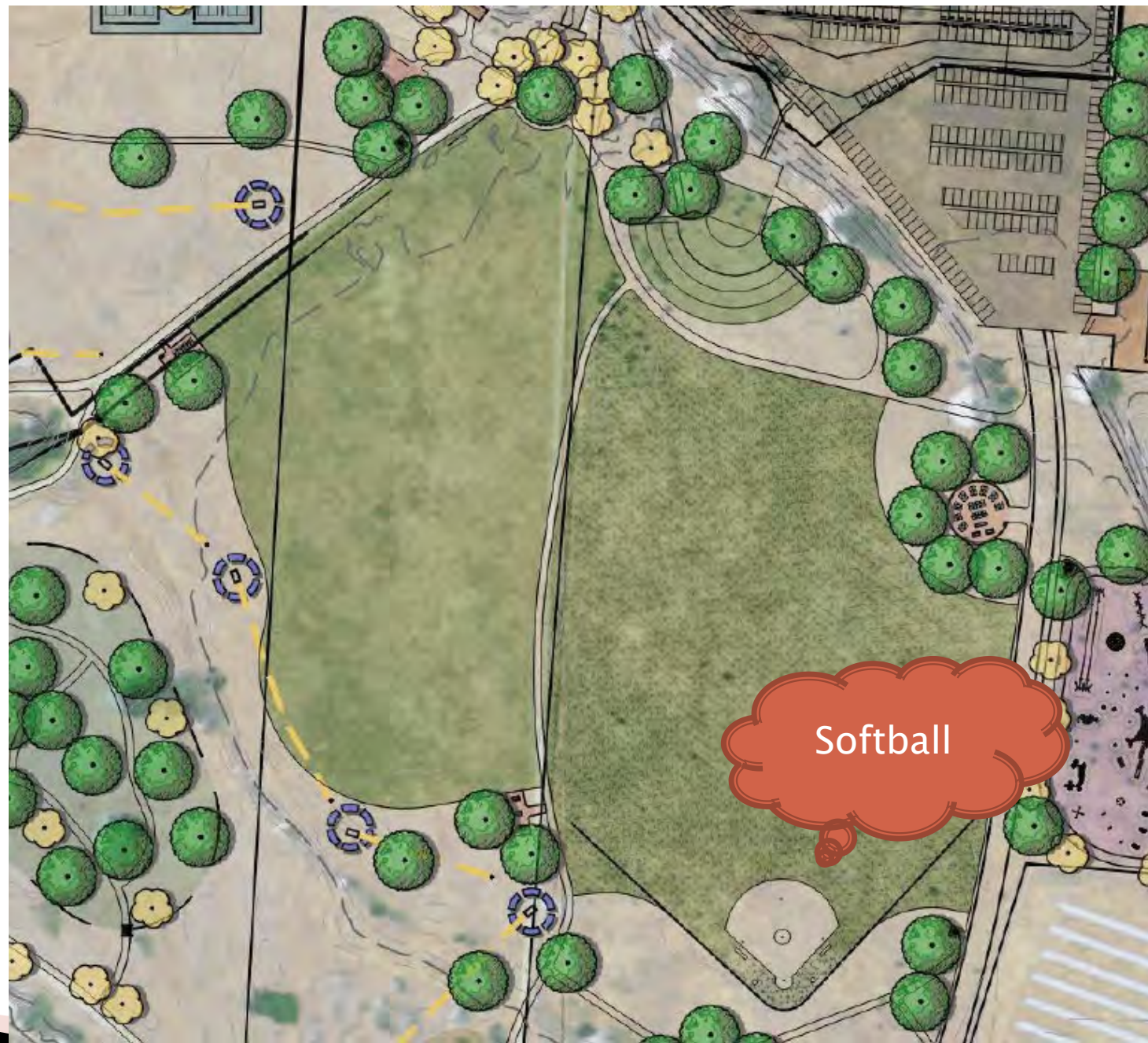
An aerial photograph of a park area. A large, light-colored circular area is visible in the center-left. To its right is a large, irregularly shaped green area containing many green tree icons. Yellow flower icons are scattered throughout the park, particularly along the edges of the green area and around the circular area. A red cloud-shaped callout points to the circular area, and another red cloud-shaped callout points to the green area.

Botanical  
Gardens



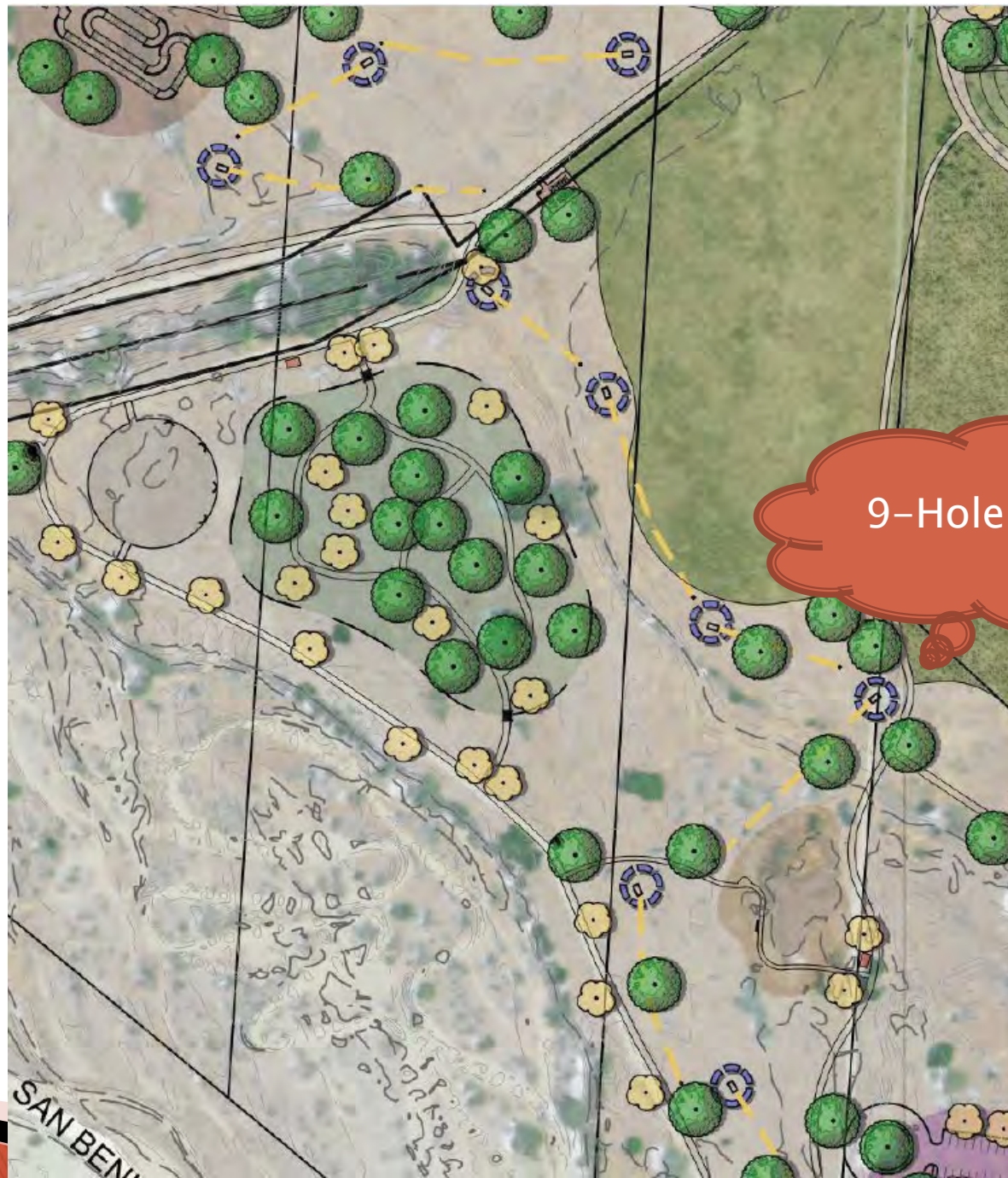






Softball

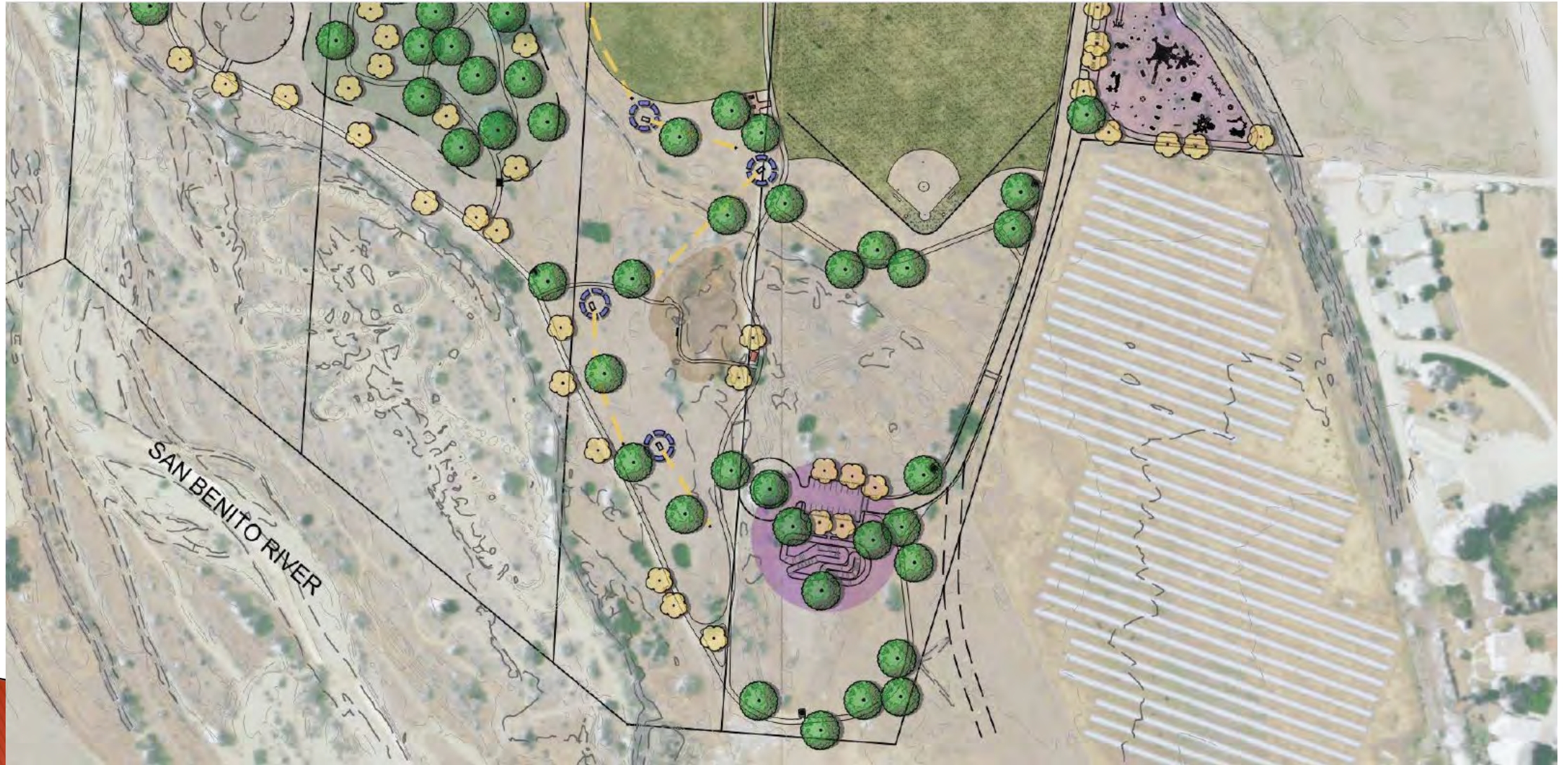




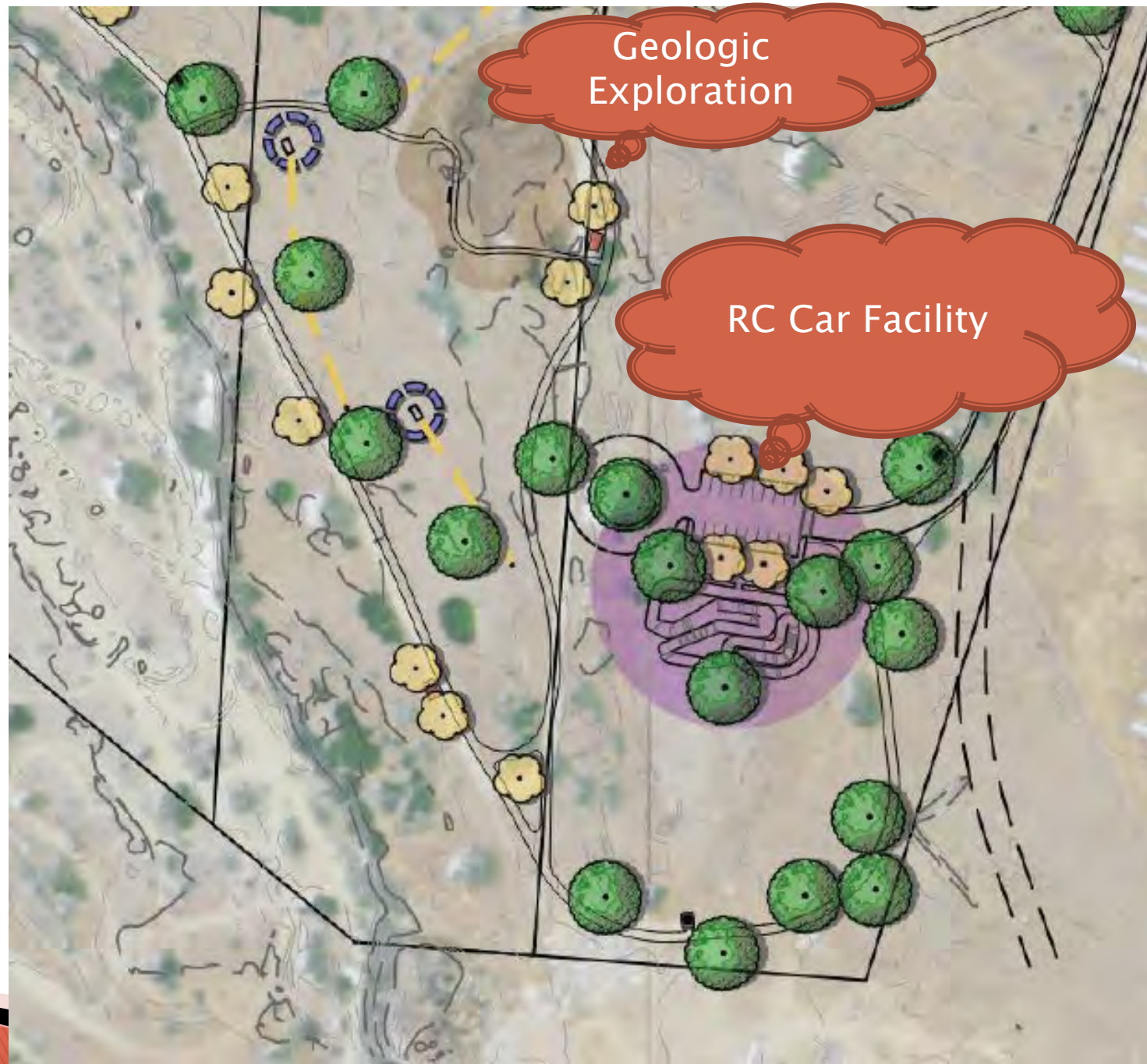
## 9-Hole Disc Golf



# Riverview Regional Park Update







Geologic  
Exploration

RC Car Facility



# Physics

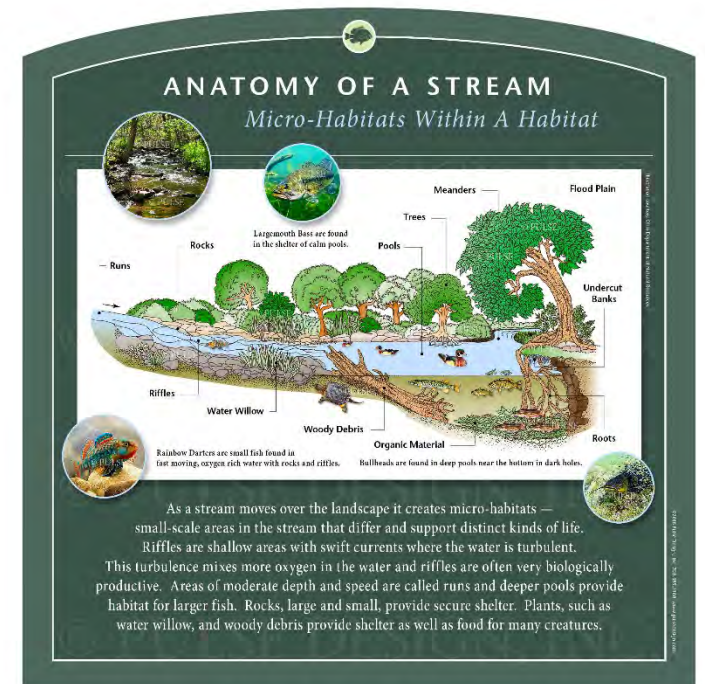
- ▶ Drop Area
- ▶ Sundial
- ▶ Paved Slope
- ▶ Astronomy Circle
- ▶ Rocket Launch Pad





# Biology

- ▶ Riparian Corridor
- ▶ Interpretive Signage
- ▶ Sensory Garden
- ▶ Native Plant Garden
- ▶ Designated Transect areas
- ▶ Citizen Science





# Theater Arts

## ► Amphitheater





# Music

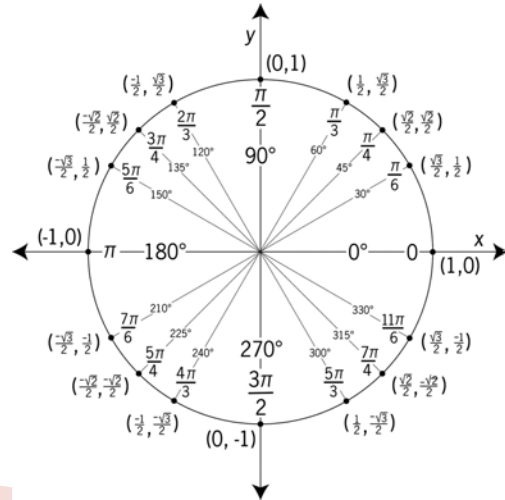
- ▶ Labeled with notes
- ▶ Actual musical instruments that are Tuned
- ▶ Designed by musicians





# Math

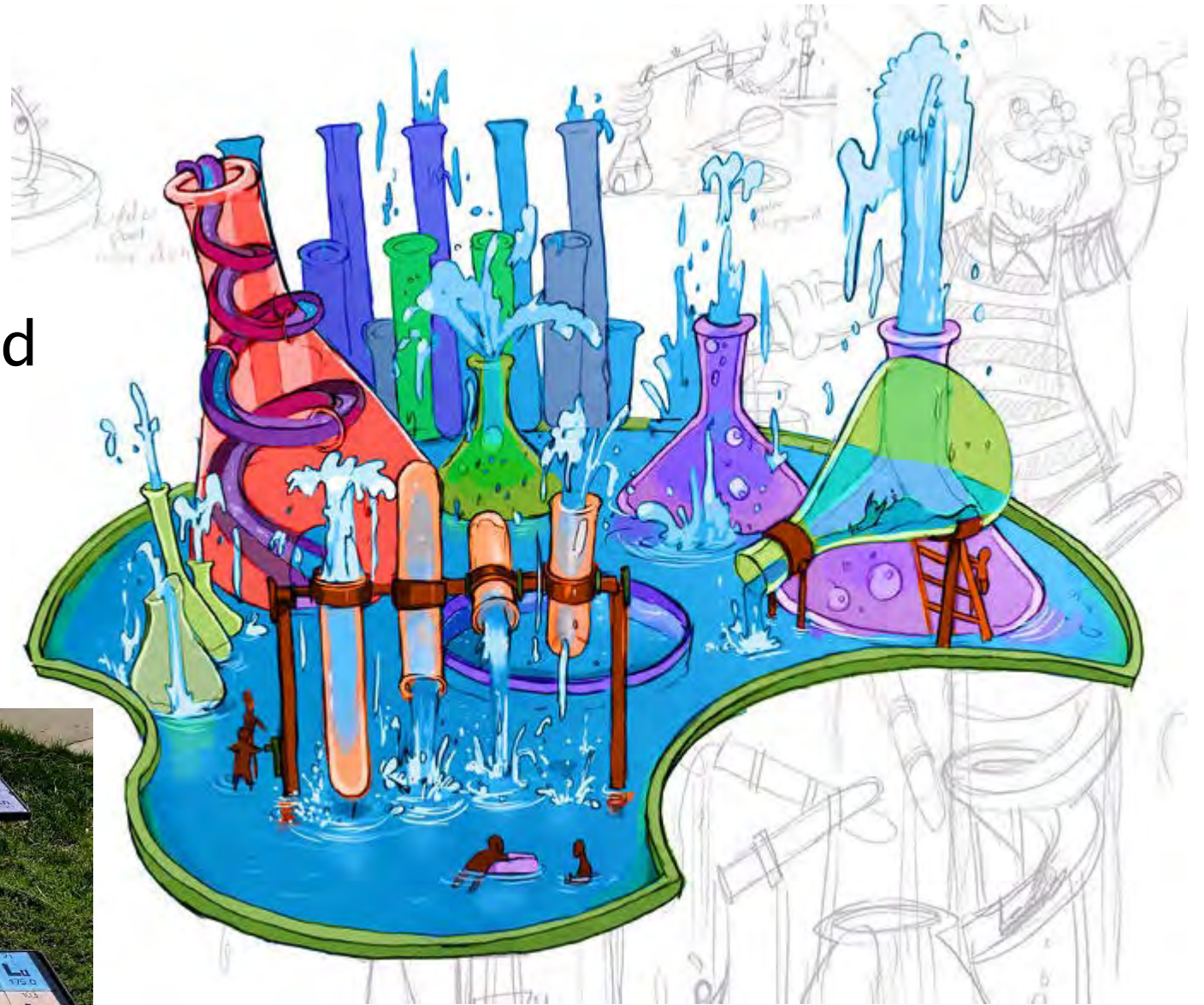
- ▶ Pi Shrine
- ▶ Protractor Swing
- ▶ Fibonacci Spiral
- ▶ Unit Circle
- ▶ Four quadrant Graph





# Chemistry

- ▶ “Periodic” Tables
- ▶ Possible future splashpad
- ▶ Water Quality





# Next Steps

- ▶ Completion of the grant package
- ▶ Presentation of the bid package to the BOS for the parking lot and trash facilities.
- ▶ Construction of the parking lot Spring 2022.







## SBC River Park



70.4 ACRES



# SAN BENITO RIVER PARKWAY



COUNTY OF SAN BENITO