



Introduction to Redistricting

Redistricting Process

| Step | Description |
|---|--|
| Staff Public Hearing September 27, 2021 <i>6:30 p.m.</i> | <ul style="list-style-type: none"> • Held prior to release of draft maps • Educate, solicit input on the communities in the Districts |
| Public Town Halls | <ul style="list-style-type: none"> • Wednesday, October 6, 1 p.m. (California National Guard Armory) • Saturday, October 9, 10 a.m. (Immaculate Conception Church) • Saturday, October 9, 2 p.m. (Calaveras Elementary School) • Friday, October 22, 4 p.m. (San Juan Bautista Community Center) |
| Census Data Releases | <ul style="list-style-type: none"> • Census Bureau releases official 2020 Census population data – Aug. 12 • California’s official ‘prisoner-adjusted’ 2020 redistricting data – Sept. 21 |
| BOS Public Hearing October 26, 2021 <i>10 a.m.</i> | <ul style="list-style-type: none"> • Held prior to release of draft maps • Educate and to solicit input on the communities in the Districts |
| BOS Public Hearing November 9, 2021 <i>10 a.m.</i> | <ul style="list-style-type: none"> • Discuss draft maps and sequencing • Deadline to submit draft maps: October 26, 5 p.m. • Posted to website by: November 1, 5 p.m. |
| BOS Public Hearing November 23, 2021 <i>10 a.m.</i> | <ul style="list-style-type: none"> • Determine final draft map and sequencing; first reading of ordinance • Deadline to submit draft maps: November 9, 5 p.m. • Posted to website by: November 15, 5 p.m. |

Redistricting Rules and Goals

1. Federal Laws

- Equal Population
- Federal Voting Rights Act
- No Racial Gerrymandering



2. California Criteria for Counties

1. Geographically contiguous
2. Undivided neighborhoods and “communities of interest” (Socio-economic geographic areas that should be kept together)
3. Cities and CDPs
4. Easily identifiable boundaries
5. Compact (Do not bypass one group of people to get to a more distant group of people)

Prohibited:

“Shall not favor or discriminate against a political party.”

3. Other Traditional Redistricting Principles

- Minimize voters shifted to different election years
- Respect voters’ choices / continuity in office
- Future population growth
- Preserving the core of existing districts

2020 Census

San Benito County - Current Districts Official Demographics

| District | | 1 | 2 | 3 | 4 | 5 | Total |
|------------------------|----------------------|--------|--------|--------|--------|--------|--------|
| | Total Pop | 14,234 | 12,113 | 13,065 | 12,032 | 12,893 | 64,337 |
| | Deviation from ideal | 1,367 | -754 | 198 | -835 | 26 | 2,202 |
| | % Deviation | 10.62% | -5.86% | 1.54% | -6.49% | 0.20% | 17.11% |
| Total Pop | % Hisp | 56.0% | 53% | 69% | 45% | 82% | 61% |
| | % NH White | 36% | 38% | 23% | 46% | 12% | 31% |
| | % NH Black | 1% | 1% | 1% | 1% | 1% | 1% |
| | % Asian-American | 4% | 5% | 4% | 5% | 3% | 4% |
| Citizen Voting Age Pop | Total | 7,947 | 7,707 | 7,996 | 8,295 | 6,237 | 38,182 |
| | % Hisp | 43% | 43% | 60% | 35% | 75% | 50% |
| | % NH White | 51% | 48% | 36% | 59% | 20% | 44% |
| | % NH Black | 2% | 0% | 1% | 1% | 2% | 1% |
| | % Asian/Pac. Isl. | 3% | 6% | 3% | 4% | 2% | 4% |

Ideal population per District: 12,867

Defining Neighborhoods

1st Question: what is your neighborhood?

2nd Question: what are its geographic boundaries?

Examples of physical features defining a neighborhood boundary:

- Natural neighborhood dividing lines, such as highway or major roads, rivers, canals and/or hills
- Areas around parks or schools
- Other neighborhood landmarks

In the absence of public testimony, planning records and other similar documents may provide definition.



Beyond Neighborhoods: Defining Communities of Interest

1st Question: what defines your community?

- Geographic Area, plus
- Shared issue or characteristic
 - Shared social or economic interest
 - Impacted by county policies
- Tell us “your community’s story”

2nd Question: Would this community benefit from being “included within a single district for purposes of its effective and fair representation”?

- Or would it benefit more from having multiple representatives?

Definitions of Communities of Interest may not include relationships with political parties, incumbents, or political candidates.

Possible Neighborhoods / Communities

Public Mapping and Map Review Tools

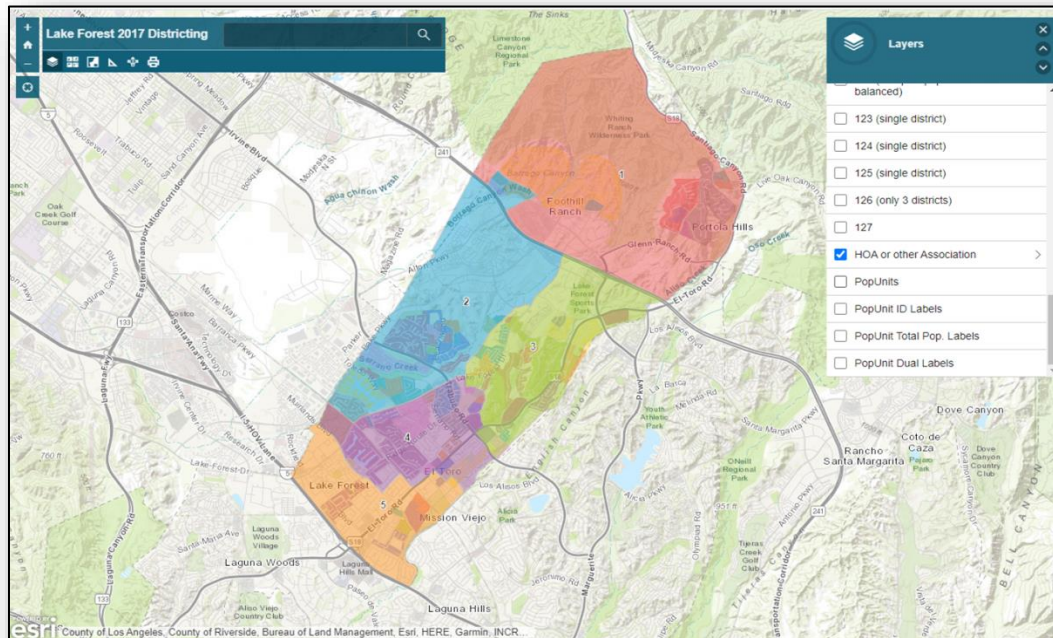
- **Different tools for different purposes**
- **Different tools for different levels of technical skill and interest**
 - Simple “review draft maps” tool
 - Easy-to-use “Draw your neighborhood” tool
 - Paper- and Excel-based simple “Draw a draft map” tools
 - Powerful, data-rich “Draw a draft map” tool

Whether you use the powerful (but complicated) online mapping tool, Excel, the paper kit, or just draw on a napkin, we welcome your maps!

Simple Map Review Tool

Online Interactive Review Map

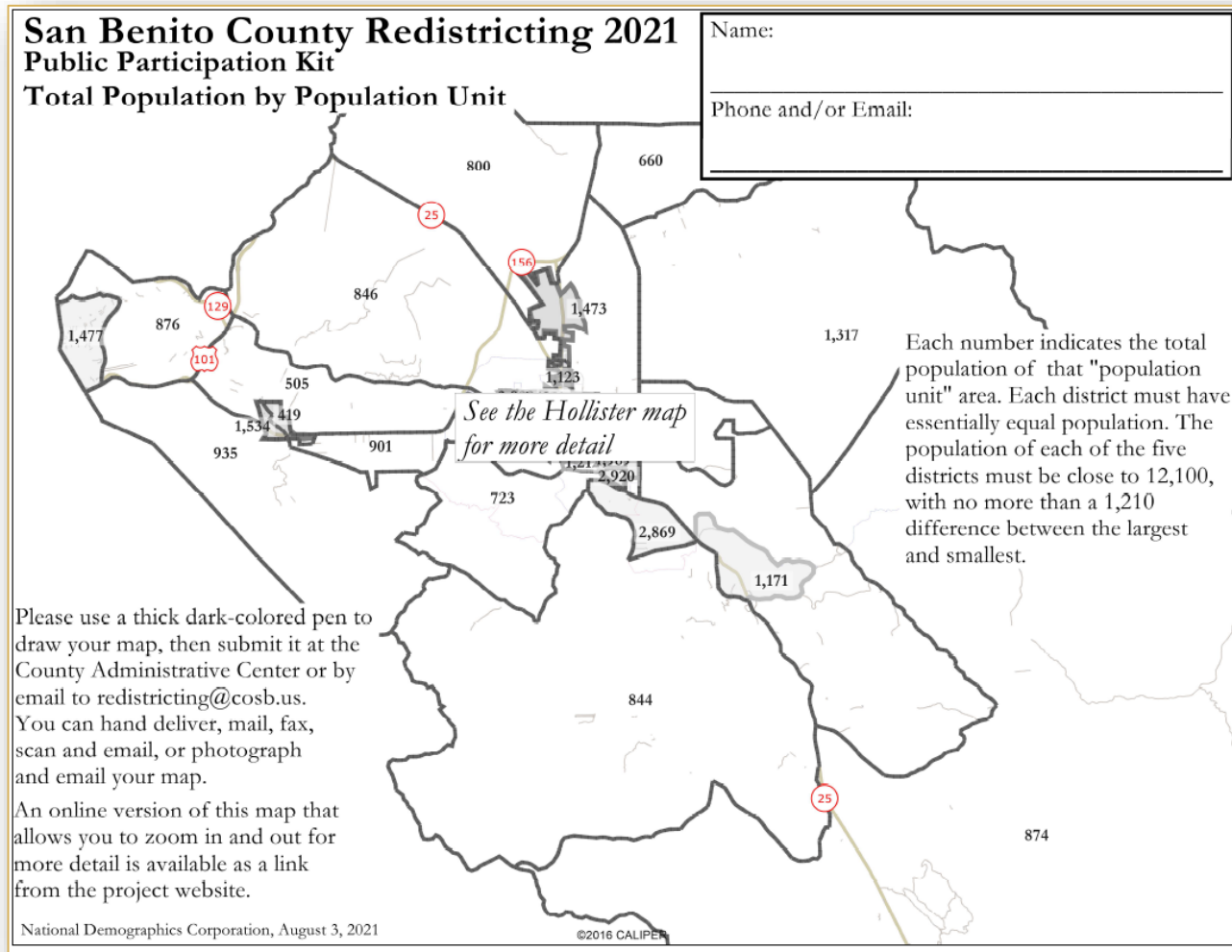
- ESRI's "ArcGIS Online" – similar to Google Maps in ease of use
- Used to review, analyze and compare maps, not to create them
- Includes overlays of "community of interest" and other Story Map data
- [Sample map from Lake Forest](#)



Simple Map Drawing Tool

Paper “Public Participation Kit”

- For those without internet access or who prefer paper
- Total Population Counts only – no demographic numbers
- Geographic units would be tracts, CDP’s and smaller cities



Simple Map Drawing Tool + Excel Supplement

“Public Participation Kit”

- For those who know Excel and do not wish to use online tools
- Adds CVAP data
- Excel does the math
- Geographic units would be tracts, CDP’s and smaller cities

San Benito County Redistricting 2021 Public Participation Kit

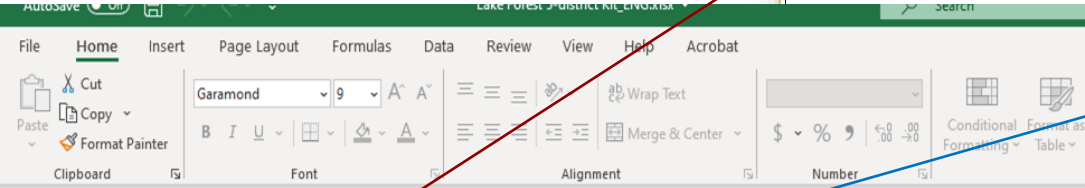
Population Unit by Number
Use this Map with Microsoft Excel

Name: _____
 Phone and/or Email: _____

See the Hollister map for more detail

Please use a thick dark-colored pen to draw your map, then submit it at the County Administrative Center or by email to redistricting@cosb.us. You can hand deliver, mail, fax, scan and email, or photograph and email your map.

An online version of this map that allows you to zoom in and out for more detail is available as a link from the project website.



| Distict (1-7) | Unit | Tot. Pop. | Hisp | Wht | Blk | NH | Asn | total | Voting Age Population | Citizen Voting Age Population | Nov. 2014 Registration | latino | asn | fil | tot | | | | | | |
|---------------|------|-----------|-------|-------|-----|----|-------|-------|-----------------------|-------------------------------|------------------------|--------|-------|-----|-----|-------|-----|----|-----|-------|-----|
| 1 | 1 | 1,216 | 642 | 557 | 18 | 15 | 873 | 397 | 442 | 12 | 831 | 390 | 441 | 0 | 574 | 195 | 7 | 3 | 245 | 63 | |
| 2 | 2 | 2,307 | 1,028 | 1,053 | 43 | 96 | 1,784 | 741 | 899 | 74 | 1,915 | 730 | 1,140 | 0 | 45 | 1,299 | 435 | 14 | 7 | 555 | 140 |
| 3 | 3 | 1,643 | 768 | 278 | 42 | 25 | 1,036 | 741 | 236 | 15 | 400 | 235 | 145 | 0 | 20 | 505 | 286 | 3 | 4 | 161 | 73 |
| 4 | 4 | 1,768 | 734 | 855 | 62 | 84 | 1,272 | 464 | 685 | 62 | 1,231 | 461 | 639 | 19 | 111 | 1,022 | 366 | 11 | 11 | 391 | 89 |
| 5 | 5 | 2,001 | 209 | 1,655 | 14 | 79 | 1,639 | 144 | 1,392 | 64 | 1,511 | 88 | 1,337 | 12 | 38 | 1,776 | 146 | 46 | 7 | 1,089 | 67 |
| 6 | 6 | 612 | 56 | 499 | 4 | 39 | 517 | 37 | 440 | 26 | 471 | 22 | 423 | 3 | 15 | 525 | 38 | 15 | 2 | 337 | 18 |
| 7 | 7 | 1,753 | 1,180 | 501 | 70 | 10 | 1,945 | 767 | 104 | 10 | 780 | 332 | 440 | 0 | 0 | 797 | 308 | 7 | 4 | 241 | 70 |

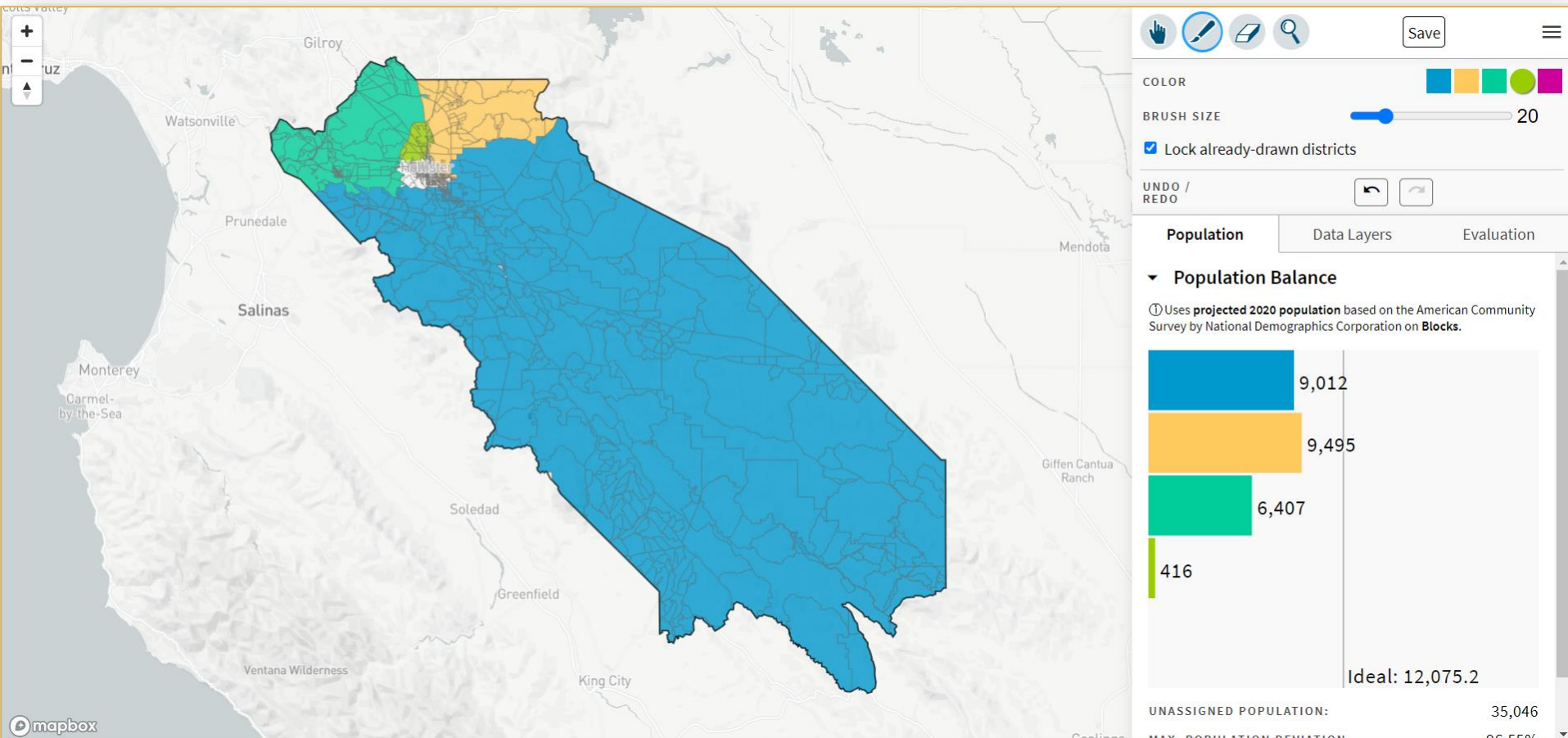
| | | Counts | | | | | | | Percentages | | | | | | | | | | |
|-----------------------------|--|--------------------------|--------|-------|-------|--------|--------|--------|-------------|--------|---------|-------|-------|-------|-------|-------|-------|------------|-------|
| Group | Category | 1 | 2 | 3 | 4 | 5 | 6 | 7 | Unassigned | Total | 1 | 2 | 3 | 4 | 5 | 6 | 7 | Unassigned | Total |
| 1 | Sums by District Assigned | Ideal population: 15,314 | | | | | | | | | | | | | | | | | |
| 2 | City of San Buenaventura 2017 Public Participation Kit | | | | | | | | | | | | | | | | | | |
| <i>enter your name here</i> | | | | | | | | | | | | | | | | | | | |
| 9 | Total Population | 34,182 | 64,294 | 1,919 | 4,530 | 83,090 | 22,928 | 33,663 | 3,840 | 4,530 | 107,197 | -100% | -100% | -100% | -100% | -100% | -100% | -100% | 0.00% |
| 10 | Hisp | 0 | 0 | 0 | 0 | 0 | 0 | 0 | 0 | 34,182 | 0 | 0 | 0 | 0 | 0 | 0 | 0 | 0 | 0 |
| 11 | NH Wht | 0 | 0 | 0 | 0 | 0 | 0 | 0 | 0 | 64,294 | 0 | 0 | 0 | 0 | 0 | 0 | 0 | 0 | 0 |
| 12 | NH Blk | 0 | 0 | 0 | 0 | 0 | 0 | 0 | 0 | 1,919 | 0 | 0 | 0 | 0 | 0 | 0 | 0 | 0 | 0 |
| 13 | NH Asn | 0 | 0 | 0 | 0 | 0 | 0 | 0 | 0 | 4,530 | 0 | 0 | 0 | 0 | 0 | 0 | 0 | 0 | 0 |
| 14 | Total CVAP | 0 | 0 | 0 | 0 | 0 | 0 | 0 | 0 | 83,090 | 0 | 0 | 0 | 0 | 0 | 0 | 0 | 0 | 0 |
| 15 | Hisp | 0 | 0 | 0 | 0 | 0 | 0 | 0 | 0 | 22,928 | 0 | 0 | 0 | 0 | 0 | 0 | 0 | 0 | 0 |
| 16 | NH Wht | 0 | 0 | 0 | 0 | 0 | 0 | 0 | 0 | 33,663 | 0 | 0 | 0 | 0 | 0 | 0 | 0 | 0 | 0 |
| 17 | NH Blk | 0 | 0 | 0 | 0 | 0 | 0 | 0 | 0 | 3,840 | 0 | 0 | 0 | 0 | 0 | 0 | 0 | 0 | 0 |
| 18 | NH Asn | 0 | 0 | 0 | 0 | 0 | 0 | 0 | 0 | 77,063 | 0 | 0 | 0 | 0 | 0 | 0 | 0 | 0 | 0 |
| 19 | Total CVAP | 0 | 0 | 0 | 0 | 0 | 0 | 0 | 0 | 18,936 | 0 | 0 | 0 | 0 | 0 | 0 | 0 | 0 | 0 |
| 20 | Hisp | 0 | 0 | 0 | 0 | 0 | 0 | 0 | 0 | 52,843 | 0 | 0 | 0 | 0 | 0 | 0 | 0 | 0 | 0 |
| 21 | NH Wht | 0 | 0 | 0 | 0 | 0 | 0 | 0 | 0 | 33,657 | 0 | 0 | 0 | 0 | 0 | 0 | 0 | 0 | 0 |
| 22 | NH Blk | 0 | 0 | 0 | 0 | 0 | 0 | 0 | 0 | 2,630 | 0 | 0 | 0 | 0 | 0 | 0 | 0 | 0 | 0 |
| 23 | NH Asn | 0 | 0 | 0 | 0 | 0 | 0 | 0 | 0 | 63,996 | 0 | 0 | 0 | 0 | 0 | 0 | 0 | 0 | 0 |
| 24 | Total Reg. | 0 | 0 | 0 | 0 | 0 | 0 | 0 | 0 | 13,374 | 13,374 | 0 | 0 | 0 | 0 | 0 | 0 | 0 | 0 |
| 25 | Latino | 0 | 0 | 0 | 0 | 0 | 0 | 0 | 0 | 1,100 | 1,100 | 0 | 0 | 0 | 0 | 0 | 0 | 0 | 0 |
| 26 | Registration | 0 | 0 | 0 | 0 | 0 | 0 | 0 | 0 | 463 | 463 | 0 | 0 | 0 | 0 | 0 | 0 | 0 | 0 |
| 27 | Latino | 0 | 0 | 0 | 0 | 0 | 0 | 0 | 0 | 151 | 151 | 0 | 0 | 0 | 0 | 0 | 0 | 0 | 0 |
| 28 | Latino | 0 | 0 | 0 | 0 | 0 | 0 | 0 | 0 | 164 | 164 | 0 | 0 | 0 | 0 | 0 | 0 | 0 | 0 |

Submitter's Comments about the plan:
 Thank this map makes sense because ...

DistrictR

“Draw Your Community of Interest” focus

- districtR.org/tag/SanBenito
- Also includes simple district-mapping tool; Only available in English
- Similar external options: [Representable.org](https://representable.org), [DrawMyCACommunity.org](https://drawmycacomunity.org)



Share Your Thoughts



www.cosb.us/government/county-of-san-benito-board-of-supervisors-bos/supervisorial-redistricting

Redistricting@cosb.us

Public Hearing & Discussion

What is your neighborhood and what are its boundaries?

What other notable areas are in the County and its cities, and what are their boundaries?

Any questions about the mapping tools?