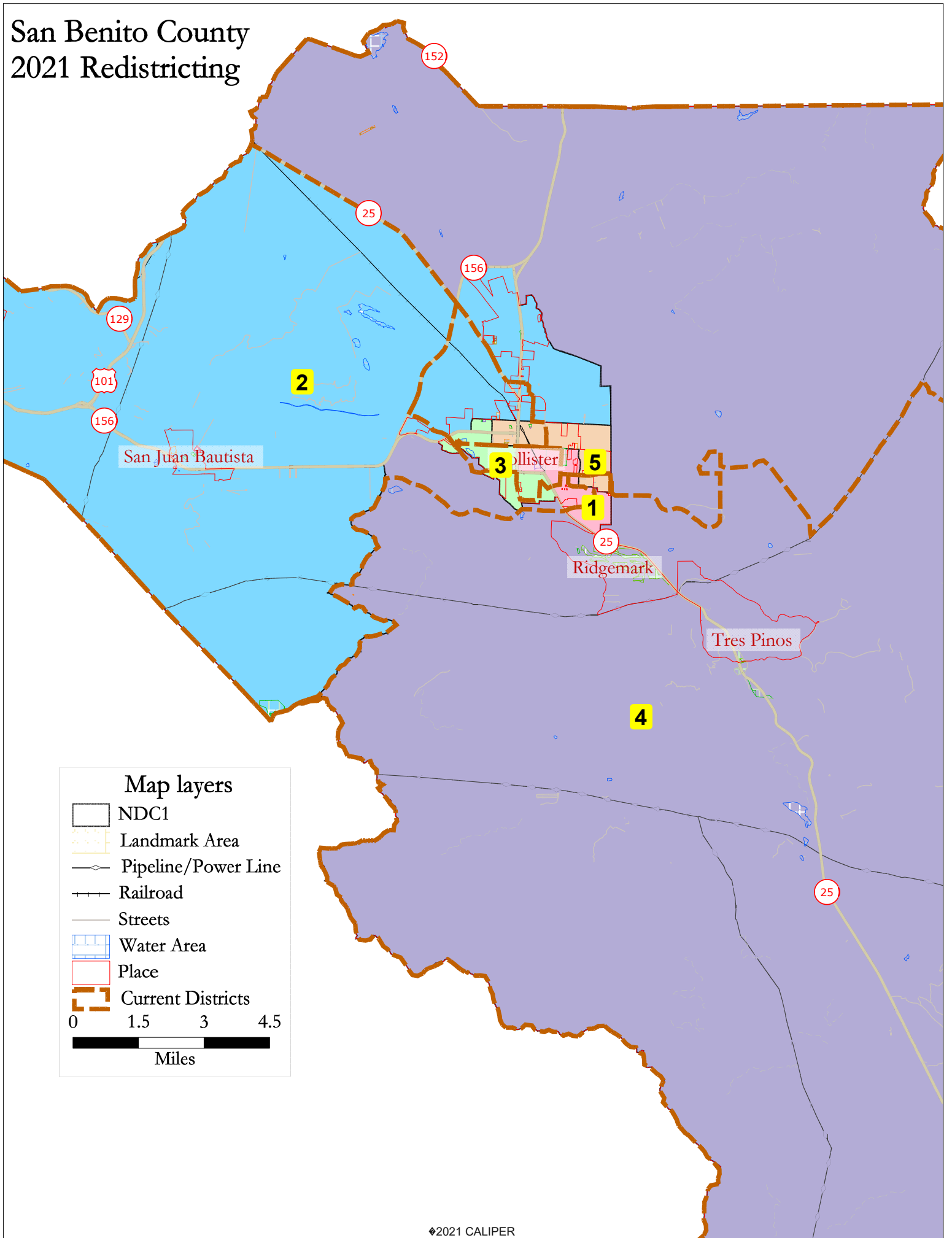
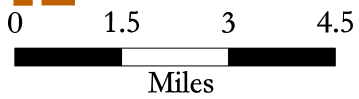


San Benito County 2021 Redistricting



Map layers

- NDC1
- Landmark Area
- Pipeline/Power Line
- Railroad
- Streets
- Water Area
- Place
- Current Districts



NDC1							
District		1	2	3	4	5	Total
	Total Pop	13,284	12,483	13,093	12,402	13,075	64,337
	Deviation from ideal	417	-384	226	-465	208	882
	% Deviation	3.24%	-2.98%	1.76%	-3.61%	1.62%	6.85%
Total Pop	% Hisp	62.0%	64%	70%	41%	68%	61%
	% NH White	30%	28%	21%	51%	24%	31%
	% NH Black	1%	1%	1%	1%	1%	1%
	% Asian-American	4%	3%	5%	4%	4%	4%
Citizen Voting Age Pop	Total	8,787	7,227	7,068	7,862	7,237	38,182
	% Hisp	55%	53%	59%	28%	56%	50%
	% NH White	39%	40%	34%	67%	38%	44%
	% NH Black	0%	1%	2%	1%	1%	1%
	% Asian/Pac.Isl.	4%	6%	4%	3%	3%	4%
Voter Registration (Nov 2020)	Total	7,221	6,989	6,383	8,178	6,805	35,576
	% Latino est.	52%	50%	60%	30%	57%	49%
	% Spanish-Surnamed	47%	46%	55%	28%	52%	45%
	% Asian-Surnamed	2%	2%	2%	2%	1%	2%
	% Filipino-Surnamed	1%	1%	3%	1%	2%	2%
	% NH White est.	48%	48%	38%	67%	43%	50%
Voter Turnout (Nov 2020)	Total	5,841	5,655	4,986	6,875	5,367	28,724
	% Latino est.	49%	47%	57%	27%	54%	46%
	% Spanish-Surnamed	45%	44%	53%	26%	50%	42%
	% Asian-Surnamed	2%	2%	2%	2%	1%	2%
	% Filipino-Surnamed	1%	1%	3%	1%	2%	2%
	% NH White est.	50%	50%	41%	69%	45%	52%
Voter Turnout (Nov 2018)	Total	4,350	3,702	3,313	5,057	3,635	20,057
	% Latino est.	44%	42%	53%	22%	48%	40%
	% Spanish-Surnamed	41%	39%	49%	21%	45%	38%
	% Asian-Surnamed	2%	2%	1%	2%	1%	2%
	% Filipino-Surnamed	1%	1%	2%	1%	2%	1%
	% NH White est.	54%	55%	44%	74%	50%	57%
ACS Pop. Est.	Total	14,131	10,967	12,703	10,780	11,795	60,376
	age0-19	30%	27%	33%	24%	28%	29%
	age20-60	55%	51%	54%	48%	57%	53%
	age60plus	15%	22%	13%	28%	15%	18%
	immigrants	18%	21%	22%	15%	23%	20%
	naturalized	44%	51%	39%	52%	41%	45%
Language spoken at home	english	56%	56%	52%	79%	60%	60%
	spanish	37%	40%	44%	18%	38%	36%
	asian-lang	2%	2%	1%	1%	1%	2%
	other lang	4%	3%	2%	2%	1%	3%
Language Fluency	Speaks Eng. "Less than Very Well"	18%	17%	24%	8%	16%	17%
Education (among those age 25+)	hs-grad	53%	48%	49%	52%	50%	51%
	bachelor	12%	16%	11%	19%	11%	14%
	graduatedegree	7%	6%	4%	9%	5%	6%
Child in Household	child-under18	44%	41%	51%	31%	46%	43%
Pct of Pop. Age 16+	employed	69%	64%	73%	63%	69%	68%
Household Income	income 0-25k	10%	11%	14%	7%	7%	10%
	income 25-50k	18%	19%	17%	14%	14%	17%
	income 50-75k	16%	13%	19%	14%	17%	16%
	income 75-200k	48%	43%	42%	45%	55%	47%
	income 200k-plus	7%	13%	8%	20%	7%	11%
Housing Stats	single family	82%	91%	82%	96%	88%	88%
	multi-family	18%	9%	18%	4%	12%	12%
	rented	42%	37%	43%	26%	34%	36%
	owned	58%	63%	57%	74%	66%	64%
Total population data from the 2020 Decennial Census.							
Surname-based Voter Registration and Turnout data from the California Statewide Database.							
Latino voter registration and turnout data are Spanish-surname counts adjusted using Census Population Department undercount estimates. NH White and NH Black registration and turnout counts estimated by NDC. Citizen Voting Age Pop., Age, Immigration, and other demographics from the 2015-2019 American Community Survey and Special Tabulation 5-year data.							