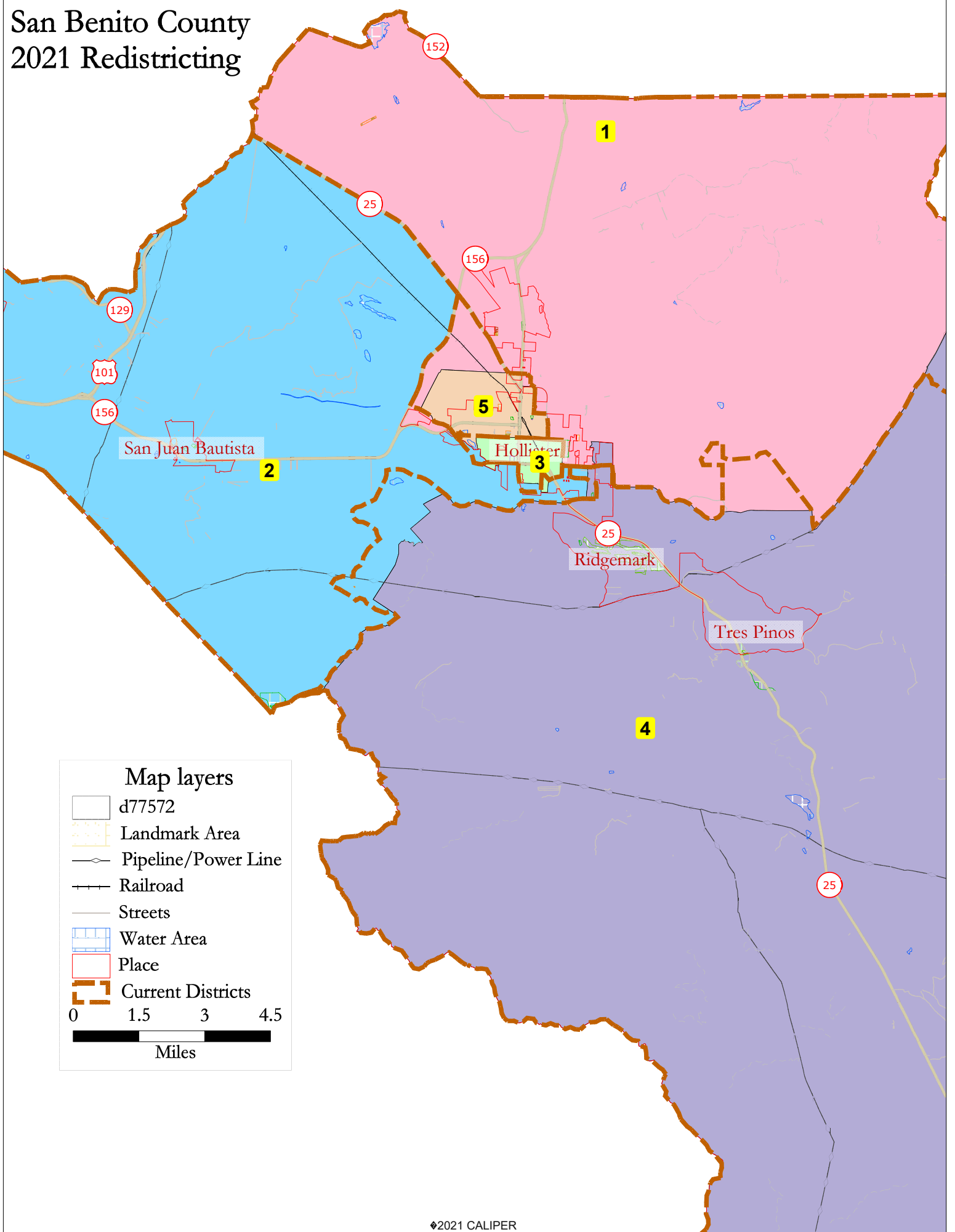
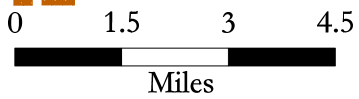


San Benito County 2021 Redistricting



Map layers

- d77572
- Landmark Area
- Pipeline/Power Line
- Railroad
- Streets
- Water Area
- Place
- Current Districts



d77572							
District		1	2	3	4	5	Total
	Total Pop	12,916	12,848	12,934	12,872	12,767	64,337
	Deviation from ideal	49	-19	67	5	-100	167
	% Deviation	0.38%	-0.15%	0.52%	0.04%	-0.78%	1.30%
Total Pop	% Hisp	57.2%	54%	69%	44%	82%	61%
	% NH White	35%	36%	24%	47%	12%	31%
	% NH Black	1%	1%	1%	1%	1%	1%
	% Asian-American	4%	5%	4%	5%	3%	4%
Citizen Voting Age Pop	Total	6,986	7,819	7,994	9,192	6,191	38,182
	% Hisp	45%	44%	59%	34%	76%	50%
	% NH White	49%	48%	36%	60%	20%	44%
	% NH Black	2%	1%	1%	1%	2%	1%
	% Asian/Pac.Isl.	2%	6%	3%	5%	2%	4%
Voter Registration (Nov 2020)	Total	7,545	7,146	6,540	8,558	5,787	35,576
	% Latino est.	45%	41%	57%	34%	76%	49%
	% Spanish-Surnamed	42%	38%	52%	31%	69%	45%
	% Asian-Surnamed	1%	2%	1%	2%	1%	2%
	% Filipino-Surnamed	2%	2%	2%	2%	2%	2%
	% NH White est.	53%	56%	42%	63%	26%	50%
	% NH Black	2%	1%	1%	1%	1%	1%
Voter Turnout (Nov 2020)	Total	6,100	5,898	5,150	7,234	4,342	28,724
	% Latino est.	42%	38%	55%	33%	74%	46%
	% Spanish-Surnamed	38%	35%	51%	30%	68%	42%
	% Asian-Surnamed	1%	2%	1%	2%	1%	2%
	% Filipino-Surnamed	2%	2%	2%	2%	1%	2%
	% NH White est.	56%	59%	44%	64%	27%	52%
	% NH Black	2%	1%	1%	1%	1%	1%
Voter Turnout (Nov 2018)	Total	3,953	4,249	3,625	5,540	2,690	20,057
	% Latino est.	35%	34%	51%	27%	71%	40%
	% Spanish-Surnamed	33%	32%	48%	25%	66%	38%
	% Asian-Surnamed	1%	2%	1%	2%	1%	2%
	% Filipino-Surnamed	1%	2%	2%	1%	1%	1%
	% NH White est.	62%	62%	47%	69%	30%	57%
	% NH Black est.	2%	1%	1%	1%	1%	1%
ACS Pop. Est.	Total	10,649	11,750	14,074	12,638	11,265	60,376
Age	age0-19	27%	27%	34%	24%	31%	29%
	age20-60	53%	51%	53%	53%	56%	53%
	age60plus	20%	23%	13%	22%	13%	18%
Immigration	immigrants	23%	18%	19%	14%	26%	20%
	naturalized	45%	55%	40%	48%	39%	45%
Language spoken at home	english	63%	68%	53%	73%	45%	60%
	spanish	35%	27%	42%	22%	53%	36%
	asian-lang	1%	2%	1%	2%	1%	2%
	other lang	2%	3%	4%	3%	1%	3%
Language Fluency	Speaks Eng. "Less than Very Well"	17%	12%	21%	8%	25%	17%
Education (among those age 25+)	hs-grad	47%	51%	51%	54%	50%	51%
	bachelor	14%	17%	11%	18%	8%	14%
	graduatedegree	6%	7%	5%	10%	2%	6%
Child in Household	child-under18	41%	38%	48%	37%	51%	43%
Pct of Pop. Age 16+	employed	66%	64%	71%	68%	71%	68%
Household Income	income 0-25k	8%	9%	16%	4%	11%	10%
	income 25-50k	15%	16%	19%	15%	20%	17%
	income 50-75k	17%	16%	18%	12%	19%	16%
	income 75-200k	49%	47%	40%	54%	44%	47%
	income 200k-plus	12%	12%	7%	16%	6%	11%
Housing Stats	single family	94%	82%	76%	97%	91%	88%
	multi-family	6%	18%	24%	3%	9%	12%
	rented	27%	40%	50%	27%	36%	36%
	owned	73%	60%	50%	73%	64%	64%
Total population data from the 2020 Decennial Census.							
Surname-based Voter Registration and Turnout data from the California Statewide Database.							
Latino voter registration and turnout data are Spanish-surname counts adjusted using Census Population Department undercount estimates. NH White and NH Black registration and turnout counts estimated by NDC. Citizen Voting Age Pop., Age, Immigration, and other demographics from the 2015-2019 American Community Survey and Special Tabulation 5-year data.							