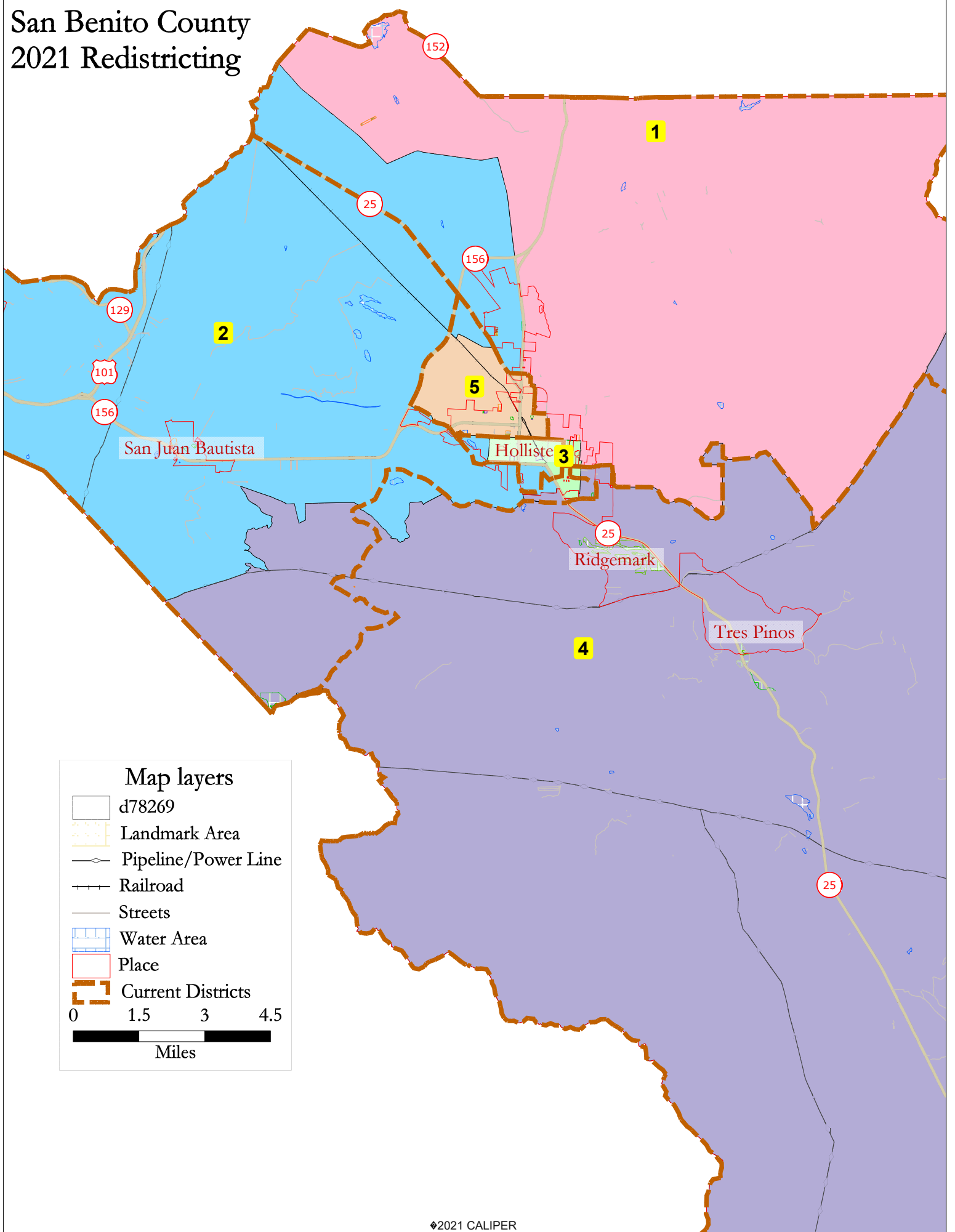


San Benito County 2021 Redistricting



d78269

District		1	2	3	4	5	Total
	Total Pop	12,734	12,725	13,009	13,007	12,862	64,337
	Deviation from ideal	-133	-142	142	140	-5	284
	% Deviation	-1.03%	-1.10%	1.10%	1.09%	-0.04%	2.21%
Total Pop	% Hisp	55.8%	53%	69%	45%	82%	61%
	% NH White	36%	36%	24%	46%	12%	31%
	% NH Black	1%	1%	1%	1%	1%	1%
	% Asian-American	4%	6%	3%	5%	3%	4%
Citizen Voting Age Pop	Total	7,183	7,876	7,999	8,897	6,227	38,182
	% Hisp	42%	43%	62%	35%	75%	50%
	% NH White	52%	48%	35%	59%	20%	44%
	% NH Black	2%	1%	1%	1%	2%	1%
	% Asian/Pac.Isl.	3%	7%	2%	5%	2%	4%
Voter Registration (Nov 2020)	Total	7,534	7,110	6,622	8,424	5,886	35,576
	% Latino est.	45%	40%	58%	34%	75%	49%
	% Spanish-Surnamed	41%	37%	53%	32%	69%	45%
	% Asian-Surnamed	2%	2%	1%	2%	1%	2%
	% Filipino-Surnamed	2%	2%	2%	2%	2%	2%
	% NH White est.	53%	56%	42%	63%	26%	50%
	% NH Black	2%	1%	1%	1%	1%	1%
Voter Turnout (Nov 2020)	Total	6,127	5,884	5,203	7,090	4,420	28,724
	% Latino est.	41%	38%	55%	33%	73%	46%
	% Spanish-Surnamed	38%	36%	50%	30%	68%	42%
	% Asian-Surnamed	2%	2%	1%	2%	1%	2%
	% Filipino-Surnamed	2%	2%	2%	2%	2%	2%
	% NH White est.	56%	58%	45%	64%	28%	52%
	% NH Black	2%	1%	1%	1%	1%	1%
Voter Turnout (Nov 2018)	Total	4,055	4,137	3,704	5,433	2,728	20,057
	% Latino est.	35%	34%	51%	28%	70%	40%
	% Spanish-Surnamed	32%	32%	47%	26%	66%	38%
	% Asian-Surnamed	1%	2%	1%	2%	1%	2%
	% Filipino-Surnamed	1%	2%	1%	2%	1%	1%
	% NH White est.	62%	62%	48%	68%	30%	57%
	% NH Black est.	2%	1%	1%	0%	1%	1%
ACS Pop. Est.	Total	10,625	11,610	14,160	12,661	11,320	60,376
Age	age0-19	27%	28%	33%	24%	31%	29%
	age20-60	53%	51%	54%	53%	56%	53%
	age60plus	20%	21%	14%	23%	13%	18%
Immigration	immigrants	23%	19%	19%	14%	26%	20%
	naturalized	44%	55%	39%	49%	39%	45%
Language spoken at home	english	67%	67%	53%	70%	45%	60%
	spanish	30%	29%	43%	24%	53%	36%
	asian-lang	1%	2%	1%	3%	1%	2%
	other lang	2%	3%	4%	3%	1%	3%
Language Fluency	Speaks Eng. "Less than Very Well"	14%	13%	22%	9%	25%	17%
Education (among those age 25+)	hs-grad	49%	47%	52%	55%	50%	51%
	bachelor	15%	19%	9%	18%	8%	14%
	graduatedegree	6%	7%	5%	10%	2%	6%
Child in Household	child-under18	40%	39%	45%	38%	51%	43%
Pct of Pop. Age 16+	employed	66%	66%	70%	67%	71%	68%
Household Income	income 0-25k	7%	13%	14%	4%	11%	10%
	income 25-50k	16%	13%	21%	15%	20%	17%
	income 50-75k	15%	15%	19%	12%	18%	16%
	income 75-200k	49%	45%	41%	54%	44%	47%
	income 200k-plus	12%	14%	6%	15%	6%	11%
Housing Stats	single family	94%	84%	75%	95%	91%	88%
	multi-family	6%	16%	25%	5%	9%	12%
	rented	26%	40%	48%	29%	36%	36%
	owned	74%	60%	52%	71%	64%	64%

Total population data from the 2020 Decennial Census.

Surname-based Voter Registration and Turnout data from the California Statewide Database.

Latino voter registration and turnout data are Spanish-surname counts adjusted using Census Population Department undercount estimates. NH White and NH Black registration and turnout counts estimated by NDC. Citizen Voting Age Pop., Age, Immigration, and other demographics from the 2015-2019 American Community Survey and Special Tabulation 5-year data.