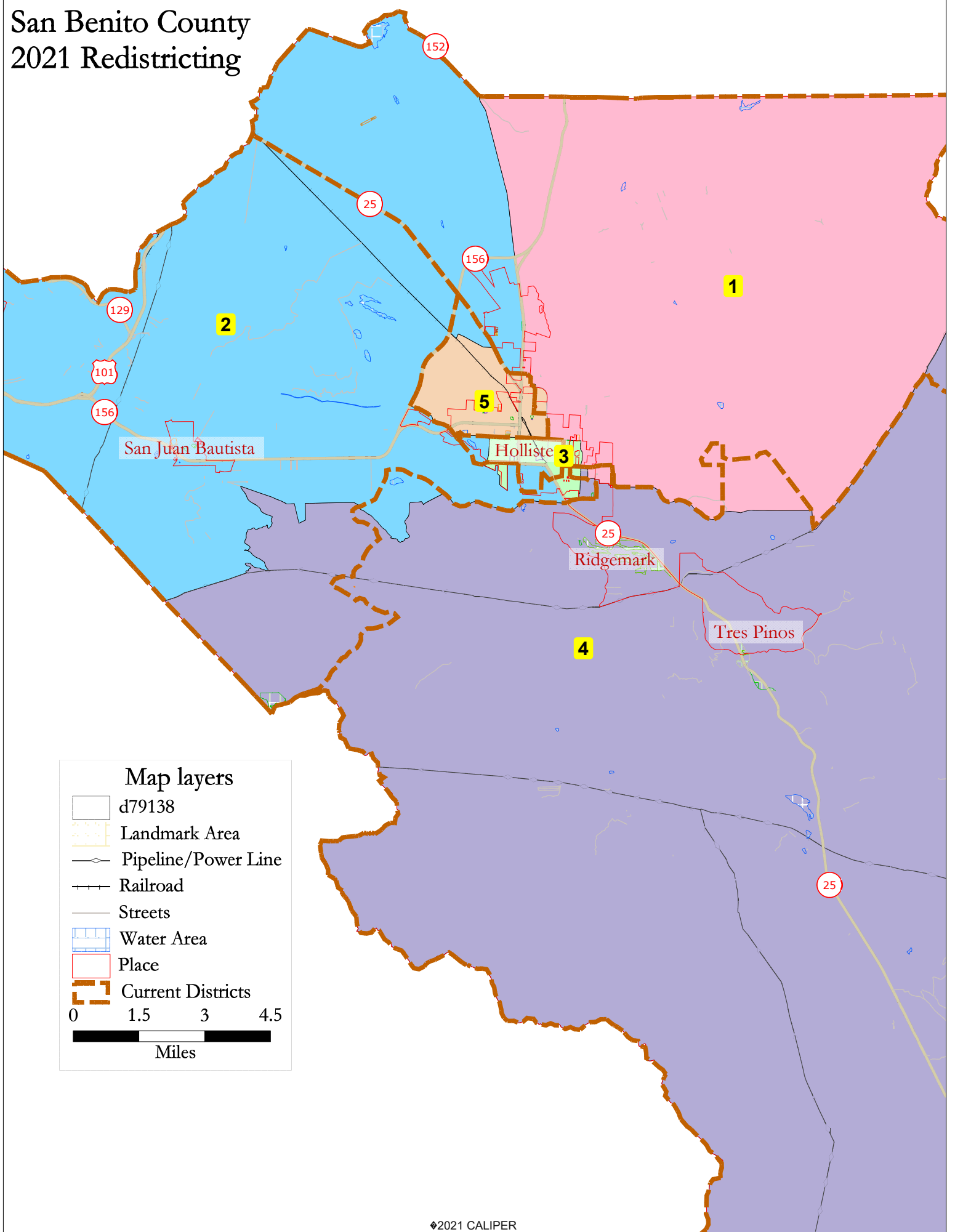


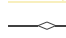
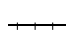






San Benito County 2021 Redistricting



Map layers

-  d79138
 -  Landmark Area
 -  Pipeline/Power Line
 -  Railroad
 -  Streets
 -  Water Area
 -  Place
 -  Current Districts
- 0 1.5 3 4.5
Miles

d79138

District		1	2	3	4	5	Total
	Total Pop	12,887	12,886	13,377	12,303	12,884	64,337
	Deviation from ideal	20	19	510	-564	17	1,074
	% Deviation	0.16%	0.15%	3.96%	-4.38%	0.13%	8.35%
Total Pop	% Hisp	55.4%	53%	69%	45%	82%	61%
	% NH White	37%	36%	25%	46%	12%	31%
	% NH Black	1%	2%	1%	1%	1%	1%
	% Asian-American	4%	6%	3%	5%	3%	4%
Citizen Voting Age Pop	Total	7,351	7,924	8,233	8,438	6,236	38,182
	% Hisp	41%	43%	61%	35%	75%	50%
	% NH White	53%	48%	35%	58%	20%	44%
	% NH Black	2%	1%	1%	1%	2%	1%
	% Asian/Pac.Isl.	3%	7%	2%	5%	2%	4%
Voter Registration (Nov 2020)	Total	7,641	7,218	6,866	7,956	5,895	35,576
	% Latino est.	44%	40%	58%	34%	75%	49%
	% Spanish-Surnamed	40%	37%	53%	31%	69%	45%
	% Asian-Surnamed	1%	2%	1%	2%	1%	2%
	% Filipino-Surnamed	2%	2%	2%	1%	2%	2%
	% NH White est.	54%	56%	43%	63%	26%	50%
	% NH Black	2%	1%	1%	1%	1%	1%
Voter Turnout (Nov 2020)	Total	6,250	5,955	5,400	6,691	4,428	28,724
	% Latino est.	41%	38%	54%	32%	73%	46%
	% Spanish-Surnamed	38%	36%	50%	30%	67%	42%
	% Asian-Surnamed	1%	2%	1%	2%	1%	2%
	% Filipino-Surnamed	2%	2%	2%	1%	2%	2%
	% NH White est.	57%	58%	46%	64%	28%	52%
	% NH Black	2%	1%	1%	1%	1%	1%
Voter Turnout (Nov 2018)	Total	4,125	4,186	3,861	5,147	2,738	20,057
	% Latino est.	35%	34%	51%	27%	70%	40%
	% Spanish-Surnamed	32%	32%	47%	26%	66%	38%
	% Asian-Surnamed	1%	2%	1%	2%	1%	2%
	% Filipino-Surnamed	1%	2%	1%	2%	1%	1%
	% NH White est.	62%	62%	49%	68%	30%	57%
	% NH Black est.	2%	1%	1%	0%	1%	1%
ACS Pop. Est.	Total	10,849	11,727	14,470	11,991	11,338	60,376
Age	age0-19	27%	28%	33%	24%	31%	29%
	age20-60	53%	50%	54%	53%	56%	53%
	age60plus	20%	22%	14%	24%	13%	18%
Immigration	immigrants	23%	19%	19%	14%	26%	20%
	naturalized	44%	54%	40%	49%	39%	45%
Language spoken at home	english	67%	67%	53%	71%	45%	60%
	spanish	30%	29%	42%	24%	53%	36%
	asian-lang	1%	2%	1%	2%	1%	2%
	other lang	2%	3%	4%	3%	1%	3%
Language Fluency	Speaks Eng. "Less than Very Well"	13%	13%	22%	9%	25%	17%
Education (among those age 25+)	hs-grad	50%	47%	52%	54%	50%	51%
	bachelor	15%	19%	9%	18%	8%	14%
	graduatedegree	6%	8%	5%	10%	2%	6%
Child in Household	child-under18	41%	40%	45%	38%	51%	43%
Pct of Pop. Age 16+	employed	66%	65%	70%	67%	71%	68%
Household Income	income 0-25k	6%	13%	14%	4%	11%	10%
	income 25-50k	16%	13%	20%	15%	20%	17%
	income 50-75k	15%	15%	19%	12%	18%	16%
	income 75-200k	51%	45%	41%	54%	44%	47%
	income 200k-plus	12%	14%	6%	15%	6%	11%
Housing Stats	single family	93%	85%	75%	96%	91%	88%
	multi-family	7%	15%	25%	4%	9%	12%
	rented	26%	40%	48%	28%	36%	36%
	owned	74%	60%	52%	72%	64%	64%

Total population data from the 2020 Decennial Census.
Surname-based Voter Registration and Turnout data from the California Statewide Database.
Latino voter registration and turnout data are Spanish-surname counts adjusted using Census Population Department undercount estimates. NH White and NH Black registration and turnout counts estimated by NDC. Citizen Voting Age Pop., Age, Immigration, and other demographics from the 2015-2019 American Community Survey and Special Tabulation 5-year data.