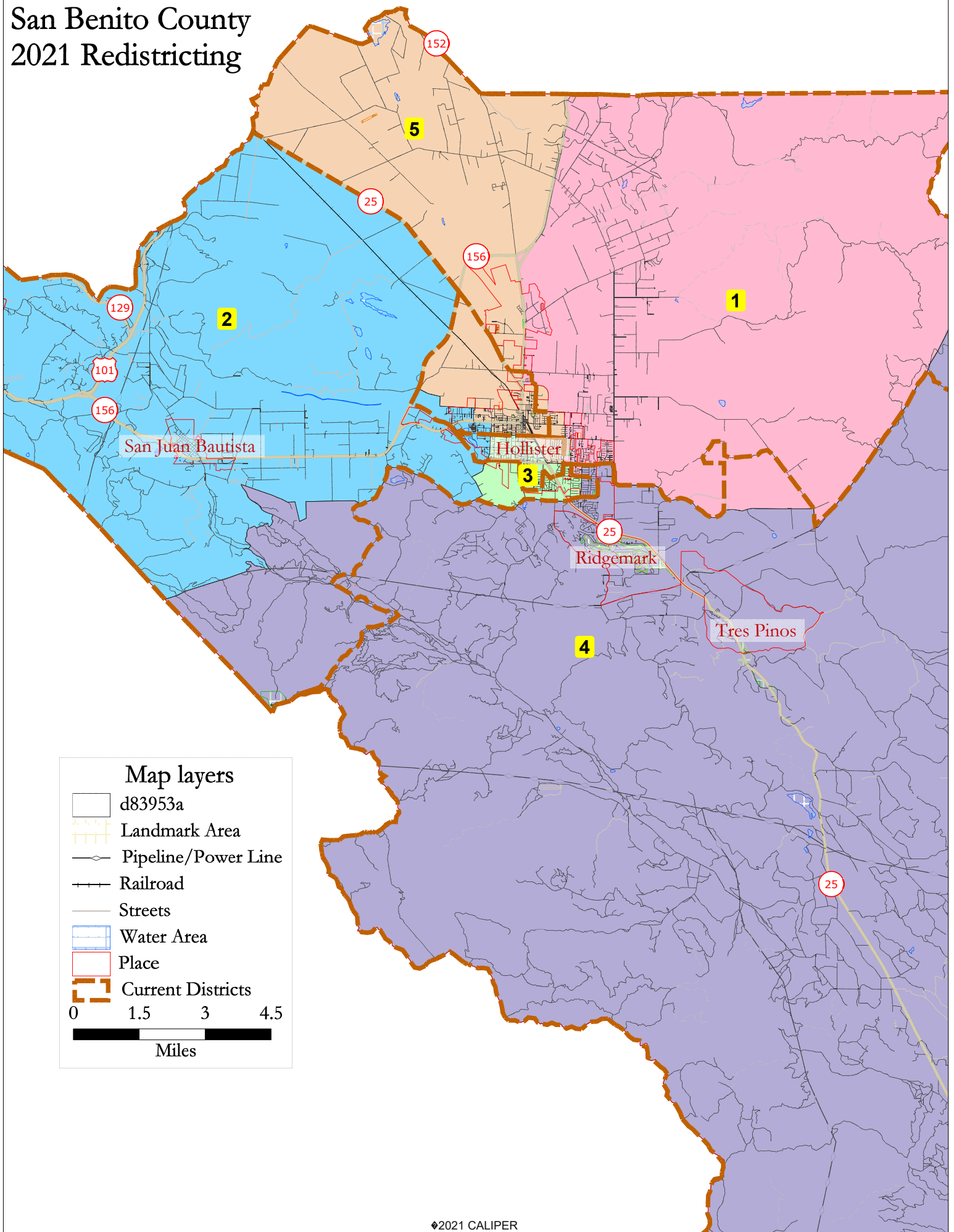
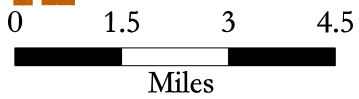


San Benito County 2021 Redistricting



Map layers

- d83953a
- Landmark Area
- Pipeline/Power Line
- Railroad
- Streets
- Water Area
- Place
- Current Districts



d83953a							
District		1	2	3	4	5	Total
	Total Pop	12,521	12,917	13,029	12,902	12,968	64,337
	Deviation from ideal	-346	50	162	35	101	508
	% Deviation	-2.69%	0.39%	1.26%	0.27%	0.78%	3.95%
Total Pop	% Hisp	55.0%	66%	66%	45%	73%	61%
	% NH White	38%	27%	26%	46%	19%	31%
	% NH Black	1%	1%	1%	1%	1%	1%
	% Asian-American	4%	4%	4%	5%	4%	4%
Citizen Voting Age Pop	Total	6,974	7,496	7,598	8,833	7,281	38,182
	% Hisp	41%	52%	57%	35%	67%	50%
	% NH White	53%	41%	36%	59%	28%	44%
	% NH Black	2%	1%	1%	1%	1%	1%
	% Asian/Pac.Isl.	3%	5%	3%	5%	3%	4%
Voter Registration (Nov 2020)	Total	7,319	6,473	6,691	8,402	6,691	35,576
	% Latino est.	44%	51%	55%	34%	64%	49%
	% Spanish-Surnamed	40%	47%	51%	32%	59%	45%
	% Asian-Surnamed	1%	2%	2%	2%	2%	2%
	% Filipino-Surnamed	1%	2%	2%	2%	2%	2%
	% NH White est.	55%	48%	43%	63%	35%	50%
	% NH Black	2%	1%	1%	1%	1%	1%
Voter Turnout (Nov 2020)	Total	5,990	5,201	5,304	7,075	5,154	28,724
	% Latino est.	41%	48%	53%	33%	61%	46%
	% Spanish-Surnamed	37%	44%	49%	30%	56%	42%
	% Asian-Surnamed	1%	2%	1%	2%	2%	2%
	% Filipino-Surnamed	1%	1%	2%	2%	2%	2%
	% NH White est.	58%	51%	45%	64%	38%	52%
	% NH Black	2%	1%	1%	1%	1%	1%
Voter Turnout (Nov 2018)	Total	4,039	3,527	3,772	5,430	3,289	20,057
	% Latino est.	35%	44%	49%	27%	56%	40%
	% Spanish-Surnamed	32%	41%	45%	26%	53%	38%
	% Asian-Surnamed	1%	2%	1%	2%	1%	2%
	% Filipino-Surnamed	1%	1%	2%	2%	2%	1%
	% NH White est.	63%	55%	48%	68%	42%	57%
	% NH Black est.	2%	0%	1%	1%	1%	1%
ACS Pop. Est.	Total	10,415	12,084	12,626	12,567	12,684	60,376
Age	age0-19	26%	30%	32%	24%	31%	29%
	age20-60	54%	51%	52%	53%	56%	53%
	age60plus	20%	19%	16%	23%	13%	18%
Immigration	immigrants	23%	22%	19%	14%	22%	20%
	naturalized	44%	45%	46%	49%	41%	45%
Language spoken at home	english	66%	56%	61%	70%	49%	60%
	spanish	30%	42%	35%	24%	47%	36%
	asian-lang	1%	1%	1%	3%	1%	2%
	other lang	2%	1%	3%	3%	3%	3%
Language Fluency	Speaks Eng. "Less than Very Well"	15%	19%	20%	9%	20%	17%
Education (among those age 25+)	hs-grad	48%	47%	53%	55%	49%	51%
	bachelor	14%	14%	11%	18%	10%	14%
	graduatedegree	6%	6%	4%	10%	5%	6%
Child in Household	child-under18	38%	44%	43%	39%	49%	43%
Pct of Pop. Age 16+	employed	66%	66%	70%	67%	70%	68%
Household Income	income 0-25k	6%	12%	14%	4%	12%	10%
	income 25-50k	17%	17%	20%	15%	16%	17%
	income 50-75k	17%	16%	18%	12%	18%	16%
	income 75-200k	49%	42%	41%	54%	46%	47%
	income 200k-plus	12%	12%	6%	15%	8%	11%
Housing Stats	single family	93%	88%	74%	95%	89%	88%
	multi-family	7%	12%	26%	5%	11%	12%
	rented	24%	37%	50%	29%	41%	36%
	owned	76%	63%	50%	71%	59%	64%
Total population data from the 2020 Decennial Census.							
Surname-based Voter Registration and Turnout data from the California Statewide Database.							
Latino voter registration and turnout data are Spanish-surname counts adjusted using Census Population Department undercount estimates. NH White and NH Black registration and turnout counts estimated by NDC. Citizen Voting Age Pop., Age, Immigration, and other demographics from the 2015-2019 American Community Survey and Special Tabulation 5-year data.							