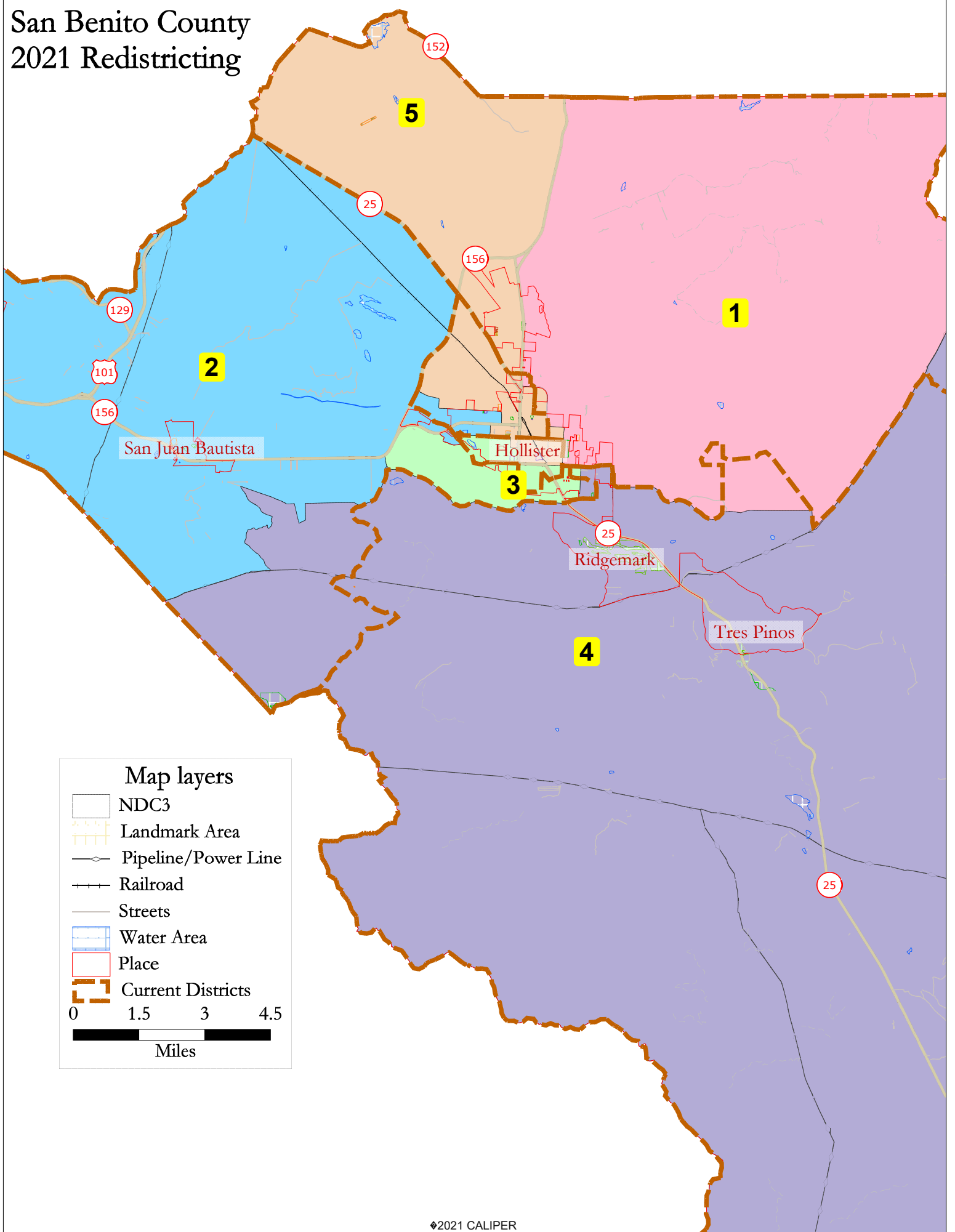
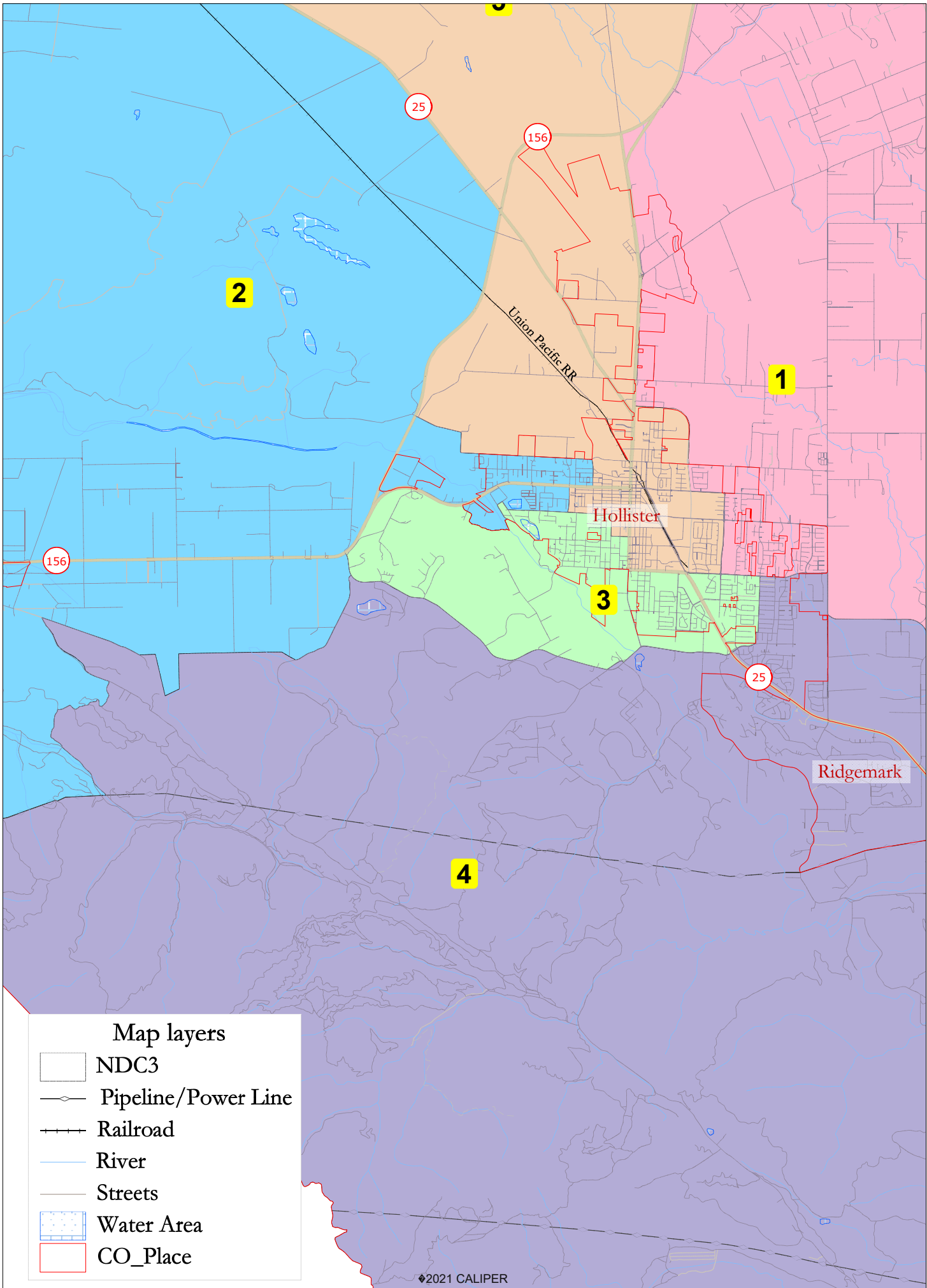

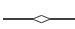
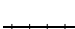






San Benito County 2021 Redistricting





Map layers

-  NDC3
-  Pipeline/Power Line
-  Railroad
-  River
-  Streets
-  Water Area
-  CO_Place

NDC 3							
District		1	2	3	4	5	Total
	Total Pop	12,573	12,838	13,013	12,911	13,002	64,337
	Deviation from ideal	-294	-29	146	44	135	440
	% Deviation	-2.28%	-0.23%	1.13%	0.34%	1.05%	3.42%
Total Pop	% Hisp	55.6%	68%	64%	45%	73%	61%
	% NH White	37%	25%	27%	46%	20%	31%
	% NH Black	1%	1%	1%	1%	1%	1%
	% Asian-American	4%	4%	5%	5%	3%	4%
Citizen Voting Age Pop	Total	7,146	7,430	7,555	8,830	7,220	38,182
	% Hisp	42%	56%	56%	35%	65%	50%
	% NH White	52%	37%	37%	59%	31%	44%
	% NH Black	2%	1%	1%	1%	1%	1%
	% Asian/Pac.Isl.	3%	5%	3%	5%	2%	4%
Voter Registration (Nov 2020)	Total	7,345	6,437	6,616	8,434	6,744	35,576
	% Latino est.	44%	54%	54%	34%	62%	49%
	% Spanish-Surnamed	40%	50%	49%	32%	57%	45%
	% Asian-Surnamed	1%	2%	2%	2%	1%	2%
	% Filipino-Surnamed	1%	2%	3%	2%	2%	2%
	% NH White est.	54%	45%	44%	63%	37%	50%
	% NH Black	2%	1%	2%	1%	0%	1%
Voter Turnout (Nov 2020)	Total	6,028	5,126	5,271	7,101	5,198	28,724
	% Latino est.	41%	51%	51%	32%	59%	46%
	% Spanish-Surnamed	38%	47%	47%	30%	55%	42%
	% Asian-Surnamed	1%	2%	2%	2%	1%	2%
	% Filipino-Surnamed	1%	2%	3%	2%	2%	2%
	% NH White est.	57%	48%	46%	64%	40%	52%
	% NH Black	2%	1%	1%	1%	0%	1%
Voter Turnout (Nov 2018)	Total	4,052	3,474	3,683	5,424	3,424	20,057
	% Latino est.	35%	46%	48%	27%	54%	40%
	% Spanish-Surnamed	32%	43%	44%	26%	51%	38%
	% Asian-Surnamed	1%	2%	1%	2%	1%	2%
	% Filipino-Surnamed	1%	1%	2%	2%	1%	1%
	% NH White est.	63%	52%	50%	68%	44%	57%
	% NH Black est.	2%	1%	1%	1%	1%	1%
ACS Pop. Est.	Total	10,439	11,830	12,970	12,573	12,565	60,376
Age	age0-19	26%	28%	34%	24%	31%	29%
	age20-60	55%	52%	52%	53%	55%	53%
	age60plus	20%	20%	14%	23%	14%	18%
Immigration	immigrants	24%	22%	20%	14%	21%	20%
	naturalized	44%	47%	43%	49%	41%	45%
Language spoken at home	english	67%	54%	59%	70%	52%	60%
	spanish	30%	43%	37%	24%	44%	36%
	asian-lang	1%	1%	1%	3%	1%	2%
	other lang	2%	2%	3%	3%	3%	3%
Language Fluency	Speaks Eng. "Less than Very Well"	14%	20%	20%	9%	20%	17%
Education (among those age 25+)	hs-grad	48%	46%	52%	55%	51%	51%
	bachelor	15%	14%	11%	18%	10%	14%
	graduatedegree	6%	5%	4%	10%	5%	6%
Child in Household	child-under18	39%	44%	47%	39%	45%	43%
Pct of Pop. Age 16+	employed	66%	64%	71%	67%	70%	68%
Household Income	income 0-25k	6%	12%	12%	4%	15%	10%
	income 25-50k	15%	18%	19%	15%	18%	17%
	income 50-75k	16%	17%	18%	12%	17%	16%
	income 75-200k	51%	42%	44%	54%	42%	47%
	income 200k-plus	12%	12%	7%	15%	8%	11%
Housing Stats	single family	96%	91%	73%	95%	84%	88%
	multi-family	4%	9%	27%	5%	16%	12%
	rented	21%	34%	48%	29%	47%	36%
	owned	79%	66%	52%	71%	53%	64%

Total population data from the 2020 Decennial Census.

Surname-based Voter Registration and Turnout data from the California Statewide Database.

Latino voter registration and turnout data are Spanish-surname counts adjusted using Census Population Department undercount estimates. NH White and NH Black registration and turnout counts estimated by NDC. Citizen Voting Age Pop., Age, Immigration, and other demographics from the 2015-2019 American Community Survey and Special Tabulation 5-year data.