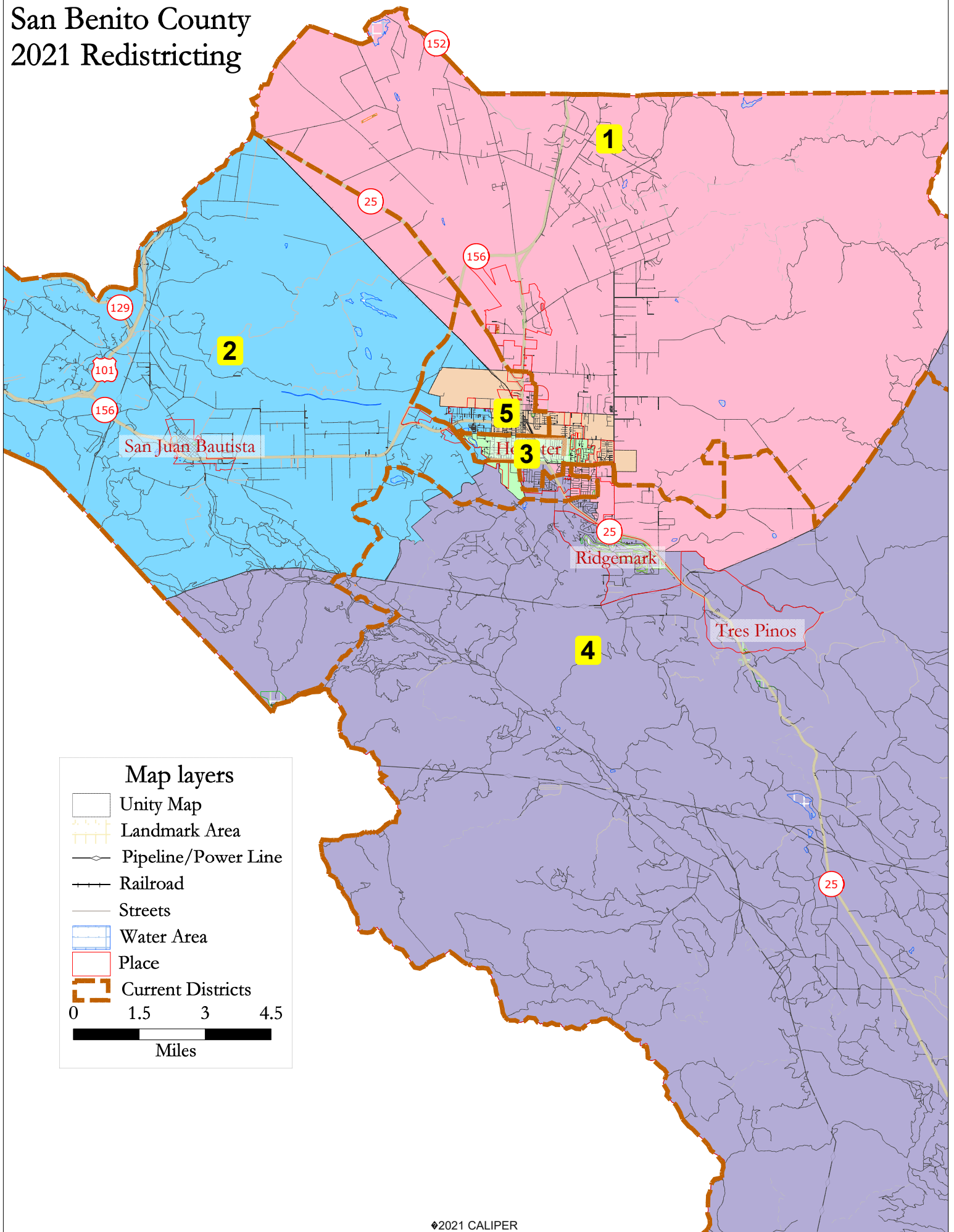


San Benito County 2021 Redistricting



Map layers

- Unity Map
 - Landmark Area
 - Pipeline/Power Line
 - Railroad
 - Streets
 - Water Area
 - Place
 - Current Districts
- 0 1.5 3 4.5
Miles

Unity Map

District		1	2	3	4	5	Total
	Total Pop	13,199	12,266	12,815	12,961	13,096	64,337
	Deviation from ideal	332	-601	-52	94	229	933
	% Deviation	2.58%	-4.67%	-0.40%	0.73%	1.78%	7.25%
Total Pop	% Hisp	57.4%	66%	70%	44%	68%	61%
	% NH White	35%	27%	23%	45%	23%	31%
	% NH Black	1%	1%	1%	1%	1%	1%
	% Asian-American	4%	4%	3%	6%	5%	4%
Citizen Voting Age Pop	Total	8,074	7,153	7,628	8,645	6,682	38,182
	% Hisp	43%	53%	61%	36%	62%	50%
	% NH White	51%	39%	36%	57%	33%	44%
	% NH Black	2%	1%	1%	1%	1%	1%
	% Asian/Pac.Isl.	3%	6%	2%	5%	3%	4%
Voter Registration (Nov 2020)	Total	7,842	6,289	6,537	8,224	6,684	35,576
	% Latino est.	46%	52%	59%	34%	58%	49%
	% Spanish-Surnamed	42%	48%	54%	31%	53%	45%
	% Asian-Surnamed	2%	2%	1%	2%	1%	2%
	% Filipino-Surnamed	1%	2%	2%	2%	2%	2%
	% NH White est.	52%	47%	42%	62%	41%	50%
	% NH Black	2%	0%	1%	1%	1%	1%
Voter Turnout (Nov 2020)	Total	6,317	5,045	5,133	6,966	5,263	28,724
	% Latino est.	42%	49%	56%	32%	55%	46%
	% Spanish-Surnamed	39%	45%	52%	30%	51%	42%
	% Asian-Surnamed	2%	2%	1%	2%	2%	2%
	% Filipino-Surnamed	1%	2%	2%	2%	2%	2%
	% NH White est.	55%	50%	44%	63%	44%	52%
	% NH Black	2%	0%	1%	1%	1%	1%
Voter Turnout (Nov 2018)	Total	4,548	3,435	3,530	5,202	3,342	20,057
	% Latino est.	37%	44%	53%	27%	49%	40%
	% Spanish-Surnamed	34%	41%	49%	25%	46%	38%
	% Asian-Surnamed	2%	2%	1%	2%	1%	2%
	% Filipino-Surnamed	1%	1%	1%	2%	1%	1%
	% NH White est.	59%	54%	47%	68%	49%	57%
	% NH Black est.	2%	0%	1%	1%	1%	1%
ACS Pop. Est.	Total	12,564	11,252	13,630	12,067	10,863	60,376
Age	age0-19	28%	28%	33%	25%	29%	29%
	age20-60	52%	52%	55%	52%	57%	53%
	age60plus	21%	20%	12%	23%	14%	18%
Immigration	immigrants	19%	21%	21%	14%	25%	20%
	naturalized	45%	48%	37%	58%	41%	45%
Language spoken at home	english	63%	56%	51%	74%	58%	60%
	spanish	33%	41%	44%	21%	40%	36%
	asian-lang	2%	1%	1%	2%	1%	2%
	other lang	3%	2%	4%	3%	1%	3%
Language Fluency	Speaks Eng. "Less than Very Well"	16%	19%	22%	9%	17%	17%
Education (among those age 25+)	hs-grad	56%	47%	49%	52%	49%	51%
	bachelor	14%	14%	10%	19%	11%	14%
	graduatedegree	6%	6%	5%	9%	4%	6%
Child in Household	child-under18	42%	43%	48%	35%	46%	43%
Pct of Pop. Age 16+	employed	68%	65%	72%	66%	69%	68%
Household Income	income 0-25k	6%	12%	14%	7%	9%	10%
	income 25-50k	20%	17%	18%	13%	15%	17%
	income 50-75k	16%	16%	19%	12%	18%	16%
	income 75-200k	47%	42%	41%	52%	52%	47%
	income 200k-plus	11%	12%	7%	16%	7%	11%
Housing Stats	single family	85%	90%	80%	93%	90%	88%
	multi-family	15%	10%	20%	7%	10%	12%
	rented	36%	35%	45%	30%	35%	36%
	owned	64%	65%	55%	70%	65%	64%

Total population data from the 2020 Decennial Census.

Surname-based Voter Registration and Turnout data from the California Statewide Database.

Latino voter registration and turnout data are Spanish-surname counts adjusted using Census Population Department undercount estimates. NH White and NH Black registration and turnout counts estimated by NDC. Citizen Voting Age Pop., Age, Immigration, and other demographics from the 2015-2019 American Community Survey and Special Tabulation 5-year data.