

Ensuring Handler Safety During Pesticide Applications



Handlers of Pesticides

CCR 6724

Pesticide Handler General Safety Requirements

- The Department of Pesticide Regulation (DPR) has worker safety requirements in regulations for employees that mix, load, apply, store, transport, or otherwise handle pesticides for any agricultural or non-agricultural use. These regulations are written to:
 - Provide safe working conditions for pesticide handlers
 - Reduce the risk of exposure, and
 - Ensure the availability of medical service

Employer/Employee Responsibilities

- California law places the majority of responsibility for employee safety on the employer. Employers must comply with rules designed to protect workers, the public, and the environment from potential adverse effects of pesticides used. Employers must:
- Know the labeling and regulatory requirements for the safe use of pesticides;



Employer/Employee Responsibilities

- Inform employees, in a language they understand, about:
 - » The pesticides being used
 - » The hazards involved, and
 - » The precautions and work practices to follow to be safe;

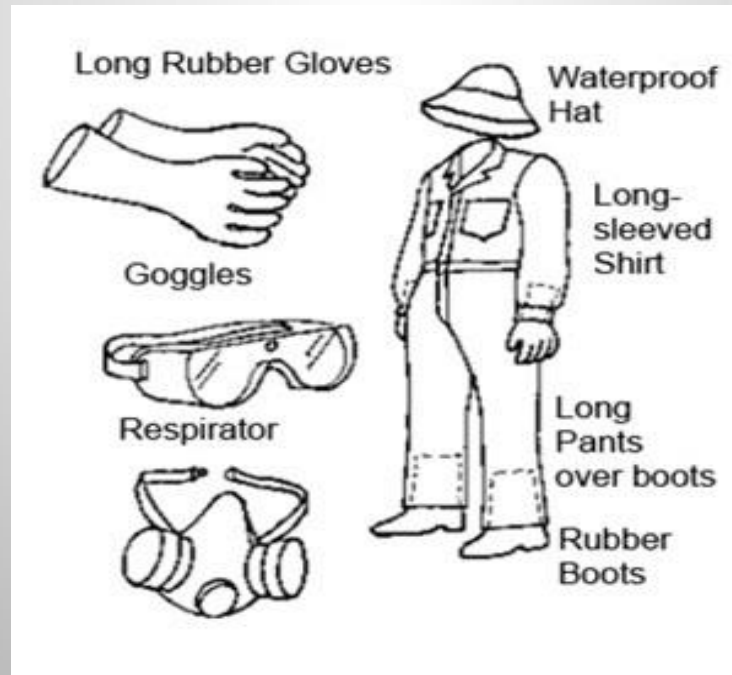
Employer/Employee Responsibilities

- Supervise employees to assure safe work practices, including all applicable regulations and pesticide labeling requirements, are followed and employees handle and use pesticides appropriately; and
- Provide a safe workplace for employees.



Employer/Employee Responsibilities

- Employees are required to use the label or regulation-required **personal protective equipment (PPE)** (?) provided by the employer.



Trainer Qualifications



Employee training can be given by anyone with the following qualifications:

1. A California certified commercial applicator (QAL, QAC)
2. A California certified private applicator. (PAC, which is those of you with a brown card)
3. A person with a valid County Biologist License in either Pesticide Regulation or Investigation and Environmental Monitoring issued by the California Department of Food and Agriculture
4. University of California Extension Advisor
5. A person who has completed an “instructor training” program presented by one of the following:
 - University of California, Integrated Pest Management Program
 - Other approved instructor training program approved by the director
6. A California licensed Agricultural Pest Control Adviser
7. A California Registered Professional Forester
8. Other valid trainer qualification approved by the director

CCR 6724 (f)

Employer Responsibilities

Pesticide Handlers must be trained before performing any handling task, (?) and training continually updated to cover any new pesticides.

Field workers must be trained before they enter an area where a pesticide has been applied or where a restricted entry interval has been in effect within the last 30 days

Training must be provided annually



Training must be provided in a manner the handler or field worker can understand.

CCR 6724 (c), (d)

Employer Responsibilities

Training must be conducted in an area reasonably free from distractions



A qualified trainer must be present during the entire training session to respond to questions

CCR 6724 (c)

Employer Responsibilities

Employers are responsible for retaining records of the Handler or Field Worker's training for 2 years.

These records shall be maintained at a central location at the workplace accessible to employees



The record shall include:

Name of the employer

The Handler or Field worker's printed name and signature

Date of Training

The title and sources of the training materials used in the training

The Trainer's name and qualification to train

CCR 6724(e)

Pesticide Handler Training Requirements



Employees who have a valid QAL, QAC or PAC are considered to be trained

CCR 6724 (d)

The employer shall have a written training program.

The training program shall describe the materials (e.g., study guides, pamphlets, pesticide product labeling, Pesticide Safety Information Series leaflets, Safety Data Sheets, slides, video) and information that will be provided and used to train his or her employees and identify the person or firm that will provide the training.

The training program shall address each of the subjects specified in subsection (b) that is applicable to the specific pesticide handling situation.

The employer shall maintain a copy of the training program while in use and for two years after use, at a central location at the workplace.

CCR 6724 (a)

Pesticide Handler Training Requirements

The training shall cover the topics listed in CCR 6724 (b) for each pesticide or chemically similar group of pesticides the handler will be using.



CCR 6724 (b)

Pesticide Handler Training Requirements

Format and meaning of information, such as precautionary statements about human health hazards, contained in pesticide product labeling;

Protect Your Health Read the Label

MOSQUITO REPELLENT

KEEP OUT OF REACH OF CHILDREN
WARNING: Read cautions on back.

Active Ingredient: DEET 7.0%
Other Ingredients: 93.0%
NET 7.5 FL. OZ (222 mL)

SIGNAL WORDS
How toxic is the product?
Caution = mildly toxic
Warning = moderately toxic
Danger = highly toxic

Top three pesticide safety tips:

- 1) Read the entire label
- 2) Only apply where the label says it should be applied
- 3) Keep all pesticides in their original containers

ACTIVE INGREDIENTS
What is in the product?

STORAGE & DISPOSAL
How does this product have to be stored? What should I do with the leftovers I don't need?

EPA REGISTRATION NUMBER
What is the unique product number showing that the EPA has approved it?

Repels Mosquitoes, Ticks, Biting Flies, Gnats, No-see-ums, Chiggers & Fleas
STOP: Read and Follow all directions and precautions on this product label.

DIRECTIONS FOR USE
It is a violation of Federal law to use this product in a manner inconsistent with its labeling.

NOTICE: To the extent consistent with applicable law, buyer assumes all responsibility for safety and use not in accordance with directions.

STORAGE AND DISPOSAL
Storage: Store in a cool, dry place, out of reach of children.
Container Disposal: If empty: _____
If partly filled: _____

PRECAUTIONARY STATEMENTS
Hazards to Humans and Domestic Animals.

First Aid. If in Eyes: _____

If Swallowed: Call a Poison Control Center or doctor immediately for treatment advice. Do not induce vomiting unless told to do so by a Poison Control Center or doctor.

IF YOU SUSPECT A REACTION TO THIS PRODUCT: Discontinue use. Take off contaminated clothing. Rinse skin immediately with plenty of water for 15-20 minutes. Call a Poison Control Center or doctor for treatment advice.

QUESTIONS: For non-emergency information concerning this product, call the National Pesticide Information Center (NPIC) at 1-800-858-7378. For emergencies, call the Poison Control Center 1-800-222-1222. Have the product container or label with you when calling a Poison Control Center or doctor, or going for treatment.

EPA Reg. No. XXX-XX-XX

DIRECTIONS FOR USE
How and where should I use the product? How much is okay?
Not following the product's instructions is not only dangerous, but it is illegal!

PRECAUTIONARY STATEMENTS
How can the product be used safely?

FIRST AID
What should I do if it gets in my eyes, mouth, lungs, or on my skin?

npic
NATIONAL PESTICIDE INFORMATION CENTER
1.800.858.7378
For general questions about pesticides, including the potential risk to humans, pets, or the environment, call NPIC at 1-800-858-7378.

POISON HELP
1-800-222-1222
If someone breathes in, swallows, or gets pesticide in the eyes or on the skin, call a poison control center 24/7 at 1-800-222-1222.

Pesticide Handler Training Requirements

The Applicator's responsibility to protect persons, animals, and property while applying pesticides; and not to apply pesticides in a manner that results in contact with persons not involved in the application process (drift)



Environmental concerns such as drift, runoff, and wildlife hazards; (?)

Pesticide Handler Training Requirements

Need for limitations, appropriate use, removal, and sanitation, of any required personal protective equipment;



Safety requirements and procedures, including engineering controls (such as closed mixing systems and enclosed cabs) for handling, transporting, storing, disposing of pesticides, and spill clean-up

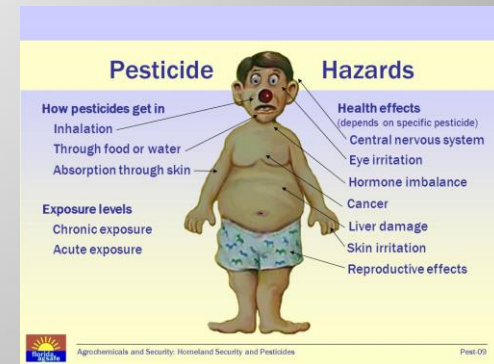
CCR 6724 (b)(3) & (b)(4)

Pesticide Handler Training Requirements

Where and in what forms pesticides may be encountered, including treated surfaces, residues on clothing, personal protective equipment, application equipment, and drift;



Hazards of pesticides, including acute, chronic, and delayed effects, and sensitization effects, as identified in pesticide product labeling, Safety Data Sheets, or Pesticide Safety Information Series leaflets;



Pesticide Handler Training Requirements

Agricultural Pesticides

- There are four ways that chemical exposure can occur:
 - Oral (mouth)
 - Dermal (skin)
 - Inhalation (lungs)
 - Ocular (eyes)

Routes by which pesticides can enter the body

Signs and symptoms of overexposure



Pesticide Handler Training Requirements

Routine decontamination procedures when handling pesticides, including that employees should:

Wash hands before eating, drinking, using the toilet, chewing gum, or using tobacco



Thoroughly wash or shower with soap and water

Change into clean clothes as soon as possible



Wash work clothes separately from other laundry before wearing them again.

Handler Hazard Communication

- Hazard communication regulations require employers to identify work-place hazards, to inform employees about the hazards they face in the workplace, and to make sure employees understand the procedures they must follow to protect themselves. The regulations establish specific procedures employers must follow in maintaining and disseminating hazard communication information to employees who may be exposed to pesticides during the course of their work.

Application Specific Information for the Handler Employee

- For the commercial or research production of an agricultural plant commodity, the operator of the property must provide specific application information about recent pesticide applications at a central location. This information must include the:
 - 1. Identification of the crop or site and treated area
 - 2. Time and date the application started and ended

Application Specific Information for the Handler Employee

- 3. Restricted entry interval
- 4. SDS(s) for the applied pesticide(s), and
- 5. Product name, United States Environmental Protection Agency (U.S. EPA) registration number, and active ingredient(s)

STATE OF CALIFORNIA
DEPARTMENT OF FOOD AND AGRICULTURE

PESTICIDE USE REPORT 026992

NUMBER: _____

COUNTY SECTION THRESHOLD RANGE SALS APP METHOD PERMITTEE/PROPERTY OPERATOR

OPERATOR/PERMIT NO. _____ SITE IDENTIFICATION NUMBER TOTAL PLANTED ACRES/UNITS

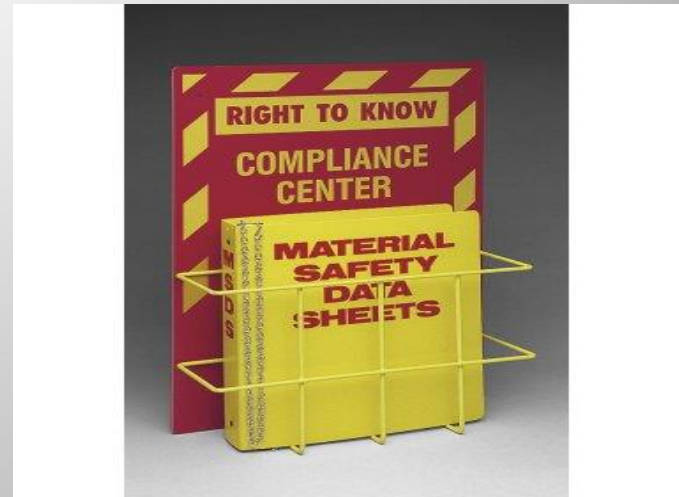
LOCATION _____ BLOCK ID OF APPLICAND

DATE/TIME APPLIED _____ ACRES/UNITS TREATED _____ COMMODITY/SITE TREATED _____

FORM NO.	18	MANUFACTURER/NAME OF PRODUCT APPLIED	19	EPA/CAIF. REG. NO. FROM LABEL	20	TOTAL PRODUCT USED	21	RATE	22	CAUTION
						LB. OZ. PT. QT. GA.				
						LB. OZ. PT. QT. GA.				
						LB. OZ. PT. QT. GA.				
						LB. OZ. PT. QT. GA.				
						LB. OZ. PT. QT. GA.				
						LB. OZ. PT. QT. GA.				

DATE PREPARED _____ DATE PREPARED BY _____ APPLIED/SUBMITTED BY _____

(1) CAC Submit to AGRICULTURAL COMMISSIONER within 7 days of application 33-028 (REV. 3-90) 50 8940



Application Specific Information for the Handler Employee

- This information must be displayed at the central location within 24 hours after completion of each application within $\frac{1}{4}$ mile of employees. The information must be displayed until 30 days after expiration of the Restricted Entry Interval (REI) or until handlers will no longer be on the establishment, whichever occurs earlier. The employer must maintain the application-specific information and SDS for 2 years after the REI expires.

Pesticide Handler Training Requirements

HOW TO READ A SAFETY DATA SHEET

OSHA BRIEF

Hazard Communication Standard: Safety Data Sheets

The Hazard Communication Standard (HCS) (29 CFR 1910.1201), revised in 2012, requires that the chemical manufacturer, distributor, or importer provide Safety Data Sheets (SDS) for each chemical. The SDS is to be made available to all employees who are likely to be exposed to the chemical. The SDS is to be made available to all employees who are likely to be exposed to the chemical. The SDS is to be made available to all employees who are likely to be exposed to the chemical.

1 IDENTIFICATION

The section identifies the chemical in the SDS as well as the hazard information. It also provides the hazard communication information. It includes the product name, the chemical name, and the hazard information. It also provides the hazard communication information.

2 HAZARD IDENTIFICATION

The section identifies the hazards of the chemical presented in the SDS. It includes the hazard information, the hazard communication information, and the hazard communication information.

3 COMPOSITION INFORMATION ON INGREDIENTS

The section identifies the ingredients contained in the product included in the SDS. It includes the hazard information, the hazard communication information, and the hazard communication information.

4 FIRST-AID MEASURES

The section describes the first aid measures to be taken in the event of an emergency. It includes the hazard information, the hazard communication information, and the hazard communication information.

5 FIRE-FIGHTING MEASURES

The section provides information on fighting fires caused by the chemical. It includes the hazard information, the hazard communication information, and the hazard communication information.

6 PHYSICAL AND CHEMICAL PROPERTIES

The section identifies the properties contained in the product included in the SDS. It includes the hazard information, the hazard communication information, and the hazard communication information.

7 STABILITY AND REACTIVITY

The section identifies the stability and reactivity of the chemical and the chemical stability information. It includes the hazard information, the hazard communication information, and the hazard communication information.

8 EXPOSURE CONTROL/PERSONAL PROTECTION

The section identifies the exposure control and personal protection measures to be taken in the event of an emergency. It includes the hazard information, the hazard communication information, and the hazard communication information.

9 PHYSICAL AND CHEMICAL PROPERTIES

The section identifies the properties contained in the product included in the SDS. It includes the hazard information, the hazard communication information, and the hazard communication information.

10 BIOLOGICAL INFORMATION

The section identifies the biological information contained in the product included in the SDS. It includes the hazard information, the hazard communication information, and the hazard communication information.

11 TOXICOLOGICAL INFORMATION

The section identifies the toxicological information contained in the product included in the SDS. It includes the hazard information, the hazard communication information, and the hazard communication information.

12 ECOTOXICOLOGICAL INFORMATION

The section identifies the ecotoxicological information contained in the product included in the SDS. It includes the hazard information, the hazard communication information, and the hazard communication information.

13 DISPOSAL INFORMATION

The section identifies the disposal information contained in the product included in the SDS. It includes the hazard information, the hazard communication information, and the hazard communication information.

14 REGULATORY INFORMATION

The section identifies the regulatory information contained in the product included in the SDS. It includes the hazard information, the hazard communication information, and the hazard communication information.

15 OTHER INFORMATION

The section identifies the other information contained in the product included in the SDS. It includes the hazard information, the hazard communication information, and the hazard communication information.

Employer Responsibilities

Employers must ensure that the SDS are readily accessible to employees. They must also ensure that the SDS are up-to-date and accurate. They must also ensure that the SDS are in a language that is understandable to the employees. They must also ensure that the SDS are in a format that is accessible to all employees.

To Order Any Additional Required Postings Or For More Information, Please Call...

1-888-306-7377 OSHA4LESS.com

How Safety Data Sheets provide hazard, emergency medical treatment, and other information about the pesticides with which employees may come in contact

Pesticide Handler Training Requirements

The hazard communication program requirements of section 6723

PESTICIDE SAFETY Information
CALIFORNIA ENVIRONMENTAL PROTECTION AGENCY A No. 8

Safety Rules for Pesticide Handlers on Farms

The pesticide label, your training, and this leaflet, tell you about pesticide dangers at work. Your employer must teach you how to use pesticides safely and how to protect yourself when you use them. Pesticides are chemicals that are used to control unwanted insects, weeds, and plant diseases.

EMPLOYERS: This is the hazard communication leaflet for pesticide handlers. Fill in the blank lines in this leaflet and display this handout at the employee's worksite.

Emergency medical care
Your employer must make plans for emergency medical care before you start working with pesticides. If you think that you made you sick or hurt you at work, tell your employer. They make sure that you are taken to a doctor right away. **DO NOT TAKE YOURSELF.** Emergency medical care is available at (address and telephone number):

REMEMBER: You do not have to pay for medical care if you get or hurt from pesticides at work.

What are my rights?
You have the right to know the following about pesticides that have been used recently where you work:

CA Department of Pesticide Regulation • 1001 Street, Sacramento CA 95834

Información de SEGURIDAD CON PESTICIDAS
AGENCIA DE PROTECCIÓN DEL MEDIO AMBIENTE DE CALIFORNIA A N.º 8

Reglas de Seguridad para el Manejo de Pesticidas

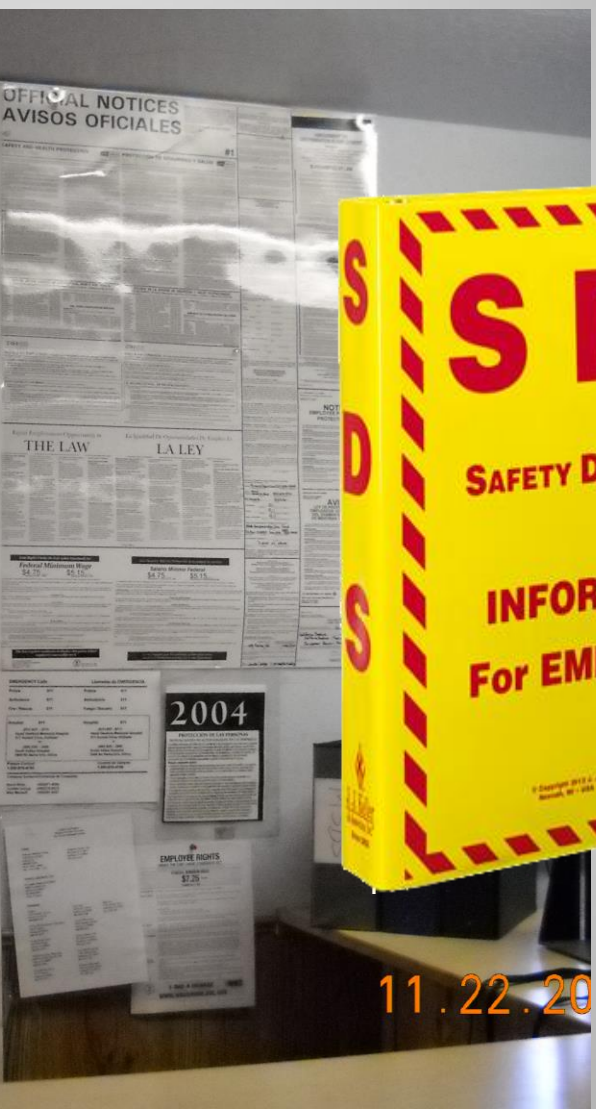
La etiqueta del pesticida, su capacitación y este folleto le informan de los peligros de los pesticidas en el trabajo. Su empleador debe enseñarle cómo usar los pesticidas de manera segura y cómo protegerse cuando los use. Los pesticidas son productos químicos que se usan para controlar plagas, como los insectos, maleza y enfermedades en las plantas.

EMPLEADORES: Este es un folleto de comunicación de riesgo para quienes manipulan pesticidas. Llene los espacios en blanco de este folleto y ponga a la vista esta hoja en el lugar de trabajo de los empleados.

Atención médica de emergencia
Su empleador debe diseñar planes de atención médica de emergencia antes de que usted empiece a trabajar con pesticidas. Si cree que los pesticidas hicieron que se enfermará o lastimará en el trabajo, avise a su empleador. El debe de encargarse de que lo lleven con el doctor inmediatamente. **NO VAYA SOLO.** La atención médica de emergencia está disponible en (dirección y número telefónico):

RECUERDE: Usted no tiene que pagar por su atención médica si se enferma o lastima a causa de los pesticidas de su trabajo.

Departamento de Regulación de Pesticidas de California • 1001 Street, Sacramento CA 95834 PIS A.N.º 8/HS-1570/01 A1-1



CCR 6724 (b)(11)

Pesticide Handler Training Requirements

PESTICIDE SAFETY **dpr** Information
CALIFORNIA ENVIRONMENTAL PROTECTION AGENCY A No. 10

Rules for Medical Care When Handlers Use Organophosphates and Carbamates

If you mix, load, or apply organophosphate or carbamate pesticides, you might need extra medical care. Your employer must arrange for you to get extra medical care if:

1. You mix, load, or apply organophosphate or carbamate pesticides AND
2. You use these pesticides for more than 6 days in a 30-day period AND
3. The label of the pesticide(s) you use has the word "DANGER" or "WARNING" on it

What is extra medical care?
If you require extra medical care, you must get special blood tests at the doctor's visit. If the pesticides are hurting your body, this may be happening even if you don't feel sick. The blood tests measure cholinesterase, a chemical in your body which helps your nerves work properly. Organophosphates and carbamates can keep cholinesterase from working and harm your nerves. You must have the blood tests to make sure you don't get sick while working with these pesticides. Having blood tests is one of your cholinesterase MONITORING tests as part of your job safety program.

When do I get the blood tests?
You MUST have a blood test BEFORE you start to work with these pesticides. This blood test should be taken when you have not worked

CA Department of Pesticide Regulation • 1001 I Street, Sacramento CA 95834 PDR No. 10 06 010 A10-1

The purposes and requirements for medical supervision if organophosphate or carbamate pesticides with the signal word "DANGER" or "WARNING" on the labeling are mixed, loaded, or applied for the commercial or research production of an agricultural plant commodity;

Información de SEGURIDAD CON PESTICIDAS **dpr**
AGENCIA DE PROTECCIÓN DEL MEDIO AMBIENTE DE CALIFORNIA A No. 10

Normas Para el Cuidado Médico Cuando los Manipuladores usan Organofosforados y Carbamatos

Si mezcla, carga o aplica pesticidas organofosforados o carbamatos, puede necesitar cuidado médico adicional. Su empleador debe hacer arreglos para que reciba cuidado médico adicional si:

1. Usas mezcla, carga o aplica pesticidas organofosforados o carbamatos Y
2. Utilizas estos pesticidas por más de 6 días en un periodo de 30 días Y
3. La etiqueta del pesticida que usa tiene la palabra "PELIGRO" o "AVISO".

¿Qué es el cuidado médico adicional?
Si usted requiere cuidado médico adicional, necesita hacerse análisis de sangre especiales para que el doctor pueda determinar si los pesticidas están dañando su cuerpo. Esto puede estar sucediendo aunque no se sienta nada mal. Los análisis de sangre miden la colinesterasa, un producto químico en su cuerpo que ayuda a sus nervios a funcionar correctamente. Los organofosforados y los carbamatos pueden hacer que la colinesterasa no funcione y dañen sus nervios. Debe hacerse los análisis de sangre para asegurarse de que no se enferme mientras trabaja con estos pesticidas. Los análisis de sangre para medir su colinesterasa DEBEN formar parte del programa de seguridad de su trabajo.

Departamento de Regulación de Pesticidas de California • 1001 I Street, Sacramento CA 95834 PDR No. 10 06 010 A10-1

Pesticide Handler Training Requirements



First aid and emergency decontamination procedures, and emergency eye flushing techniques

and if pesticides are spilled or sprayed on the body to wash immediately with decontamination supplies and as soon as possible, wash or shower with soap and water and change into clean clothes



Pesticide Handler Training Requirements

How and when to obtain emergency medical care (?)

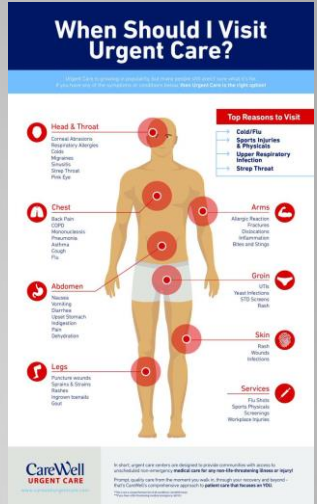
CCR 6724 (b)(14)

Employer Responsibilities Reminder...

If you suspect an employee may have a pesticide illness and you transport them to a physician for treatment, you will need to supply the following information to the treating medical personnel:


(d)The employer shall provide the following information to medical personnel treating an employee for a suspected pesticide exposure in the production of an agricultural commodity:

- (1) Copies of the applicable Safety Data Sheet(s) and the product name(s), U.S. Environmental Protection Agency registration number(s) and active ingredient(s) for each pesticide product to which the person may have been exposed.
- (2) The circumstances of application or use of the pesticide.
- (3) The circumstances that could have resulted in exposure to the pesticide.




Pesticide Handler Training Requirements

Prevention, recognition, and first aid for heat-related illness in accordance with Title 8 of the California Code of Regulations, section 3395;

 **Signs and Symptoms of Heat Related Illnesses**


Heat Exhaustion:

- Excessive sweating
- Cramps
- Rapid pulse
- Headache
- Nausea
- Vomiting



Heat Stress:

- Dried, red skin
- Red hot skin
- High body temperature
- Disoriented
- Confusion



Pesticide Handler Training Requirements

The requirement that handlers of pesticides used in the commercial or research production of an agricultural commodity must be at least 18 years of age



Pesticide Handler Training Requirements

Field posting requirements and restricted entry intervals when pesticides are applied for the commercial or research production of an agricultural commodity;



That employees should not take pesticides or pesticide containers home from work; (?)

Pesticide Handler Training Requirements

Potential hazards to children and pregnant women from pesticide exposures, including that:

Children and nonworking family members should keep away from treated areas;

After performing handling activities or after working in a treated area, employees should remove boots or shoes before entering the home and remove work clothes; and

Employees should wash or shower before physical contact with children or family members.



- Take a bath or shower as soon as you get home from work
- Wash with soap & water and use shampoo on your hair
- Put on clean clothes

Pesticide Handler Training Requirements

How to report suspected pesticide use violations;

California Department of Pesticide Regulation
 2001 L Street
 Sacramento, CA 95812-0215
 916-441-4300
www.cdpr.ca.gov

BRANCHES

Refinement
 916-224-4220
Northern Regional Office
 916-224-4220
Central Regional Office
 916-223-8111
Southern Regional Office
 714-271-7901

Environmental Monitoring
 916-316-0216

Field Operations
 916-224-1200

Information Technology
 916-441-4110

Medical Toxicology
 916-441-4233

HEI Assessment
 916-441-4212

Pest Management and Licensing
 916-441-2941

Licensing/Certification
 916-441-0218

Research
 916-322-4053

Pesticide Registration
 916-441-4200

Worker Health and Safety
 916-441-4222

Reporting complaints about pesticide use

CA/DFPR Department of Pesticide Regulation and your local county agricultural commissioner share joint responsibility for monitoring and regulating the use of pesticides to protect the safety of workers, the public, and the environment. Through state and county pesticide regulatory programs, DPR evaluates pesticides before they are sold or used in the state, conducts air and water monitoring studies, samples produce for pesticide residues, and with the commissioners, trains, licenses and inspects professional pesticide applicators. An essential element of this program is to respond to public complaints and questions about the use of pesticides.

What is a pesticide?

"Pesticides" describes many substances used to control pests. "Pests" are organisms that cause damage or economic loss, or transmit disease. Pests include insects, weeds, plant diseases, rodents, algae, viruses, and bacteria. Pesticides include insecticides, herbicides, fungicides, rodenticides, disinfectants, and other kinds of pest-controlling chemicals, including many household products.

What does the law require?

It is important to know what is and what is allowed when using, storing and disposing of pesticides. Federal and State laws require that all pesticides be handled strictly according to their label instructions. Pesticides must not be allowed to drift, run off or move off target, or be used in any way not approved by the label, law, or regulation. However, some agricultural

California Department of Pesticide Regulation

HOME PROGRAMS DATABASES NEWS/PUBLICATIONS QUICK LINKS

Reporting Pesticide Problems

If this is an emergency and pesticides endanger people's health, call 911.

In non-emergency situations, you can file a complaint with state or local officials, who will follow up on your concerns:

Complaints about pesticide use, illegal applications

In non-emergency situations, you should call in pesticide complaints to your County Agricultural Commissioner, who handles local pesticide use enforcement. You can get the number online (California Department of Food and Agriculture page opens in a new window) or by calling 1-877PestLine (1-877-378-5463). This free call will also connect you directly to the Commissioner's office. A DPR handout, PDF (557 kb) has more information about how to file a complaint. (Español, PDF, 524 kb)

If you cannot reach your County Department of Agriculture to file a complaint or you feel your complaint was not adequately investigated, ask to speak directly to your County Agricultural Commissioner, or you can call the Department of Pesticide Regulation, (916) 324-4100 or E-mail to CDPRWeb@cdpr.ca.gov.



California Department of Pesticide Regulation
 2001 L Street
 Sacramento, CA 95812-0215
 916-441-4300
www.cdpr.ca.gov

BRANCHES

Refinement
 916-224-4220
Northern Regional Office
 916-224-4220
Central Regional Office
 916-223-8111
Southern Regional Office
 714-271-7901

Environmental Monitoring
 916-316-0216

Field Operations
 916-224-1200

Information Technology
 916-441-4110

Medical Toxicology
 916-441-4233

HEI Assessment
 916-441-4212

Pest Management and Licensing
 916-441-2941

Licensing/Certification
 916-441-0218

Research
 916-322-4053

Pesticide Registration
 916-441-4200

Worker Health and Safety
 916-441-4222

¿Quejas de los pesticidas? Tiene el derecho de...

El Departamento de Regulación de Pesticidas de California (DPR) de la Agencia de Protección Ambiental de Estados Unidos y el comisionado de agricultura de su condado comparten la responsabilidad de vigilar y regular el uso de pesticidas para proteger la seguridad de trabajadores, del público y del medio ambiente. Por medio de programas de implementación de pesticidas en el estado y en los condados, el DPR evalúa los pesticidas antes de que se vendan o usen en el estado, dirige servicios de monitoreo del aire y agua, realiza verificaciones y muestra y/o demuestra si tienen residuos de pesticidas y, junto con los comisionados, entrena a aplicadores profesionales de pesticidas. Los otros sus licencias e inspecciona sus actividades. Un factor esencial de este programa es responder a las quejas y preguntas del público sobre el uso de pesticidas.

¿Qué es un pesticida?

Las palabras "pesticidas" se refiere a muchas sustancias que se usan para controlar los plagas. Las "plagas" son organismos que causan daño o pérdida económica o transmiten enfermedades. Incluyen insectos, malezas (malas hierbas), enfermedades de las plantas, roedores, algas, virus y bacterias. Los pesticidas incluyen insecticidas, herbicidas, fungicidas, rodenticidas, desinfectantes y otros tipos de sustancias químicas que controlan plagas, inclusive muchos productos de uso común.

¿Qué exige la ley?

Es importante saber lo que está y no está permitido en cuanto al uso, almacenamiento y desecho de pesticidas. Las leyes federales y estatales exigen que se haya enterado de todo pesticida, según las instrucciones en la etiqueta. No se han enterado muchos de los pesticidas son amarrados por el agua o viento, se desliza o se fuga fuera de la zona a tratar o sean usados de manera diferente a la que indica la etiqueta, la ley o las regula-

Pesticide Handler Training Requirements

The employee's rights, including the right:

To personally receive information about pesticides to which he or she may be exposed

For his or her physician or an employee representative designated in writing to receive information about pesticides to which he or she may be exposed

To be protected against retaliatory action due to the exercise of any of his or her rights

and

To report suspected use violations to the Department of Pesticide Regulation or County Agricultural Commissioner.



Workplace Requirements

Employers are responsible for providing adequate workplace lighting, carrying out equipment inspection to ensure that is in good repair and safe to operate, notifying employees who service application equipment of potential hazards, and providing closed mixing systems when these are required.



Questions?

